



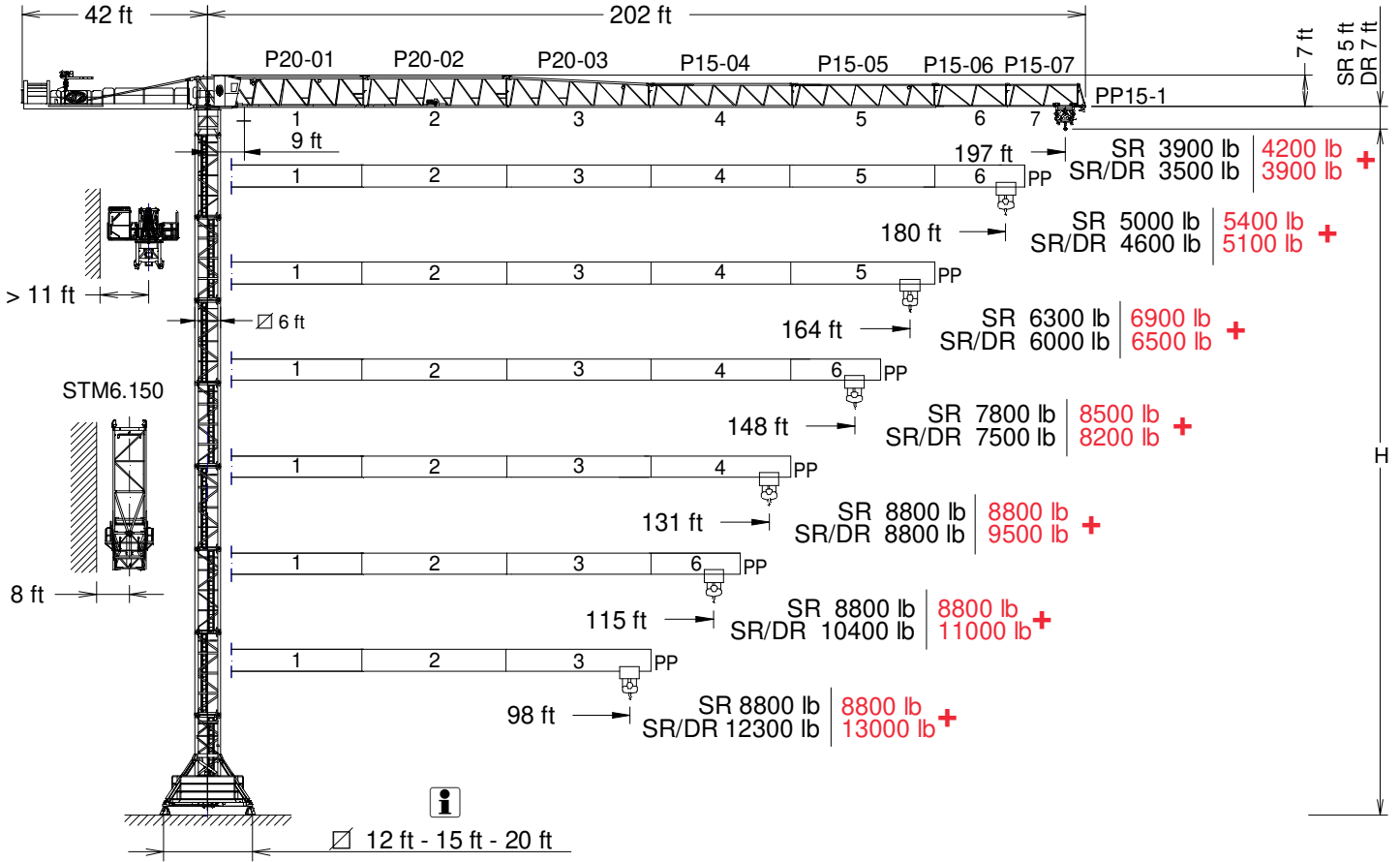
UNE 58-101
FEM 1001

J165.8

GRUA TORRE / TOWER CRANE

FEM 1001

UNE-EN-ISO 9001



*OPTIONAL EXTRA LIFT

P20-01	173.40.050	P15-04	173.43.000	P15-07	173.46.000	T6-150	161.31.000
P20-02	173.41.000	P15-05	173.44.000	PP15-1	173.47.000	TD6-150	161.31.700
P20-03	173.42.000	P15-06	173.45.000	T3-150	161.32.000	T12-150	161.31.500

CUSTOMIZE YOUR CRANE

EXTRA Lift	OPTI Cubo	TC Diagnosis SYSTEM	CLIMBING Solution	SAFETY Pack	Customization	ECO Mode	COMFORT Cabin	HIGH POWER Motors	JL25 Tower Crane Elevator	SMARTLINK BE SMART keep control

OPTIMUS
line JASD



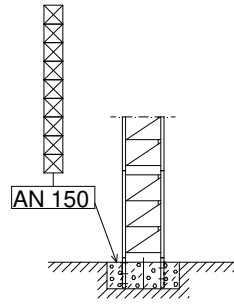
Reservado el derecho a modificaciones sin previo aviso. Declinamos toda responsabilidad derivada de la información proporcionada / Subject to modification, without prior notice. This information is supplied without liability

11/04/2025

SR

(H_{SR}) ESTACIONARIA 1 / STATIONARY 1

▽▽	H(ft)	☒	☐
197 - 98	174	9	-

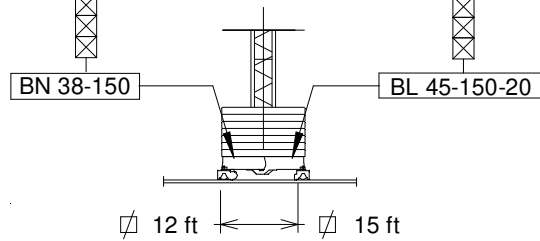
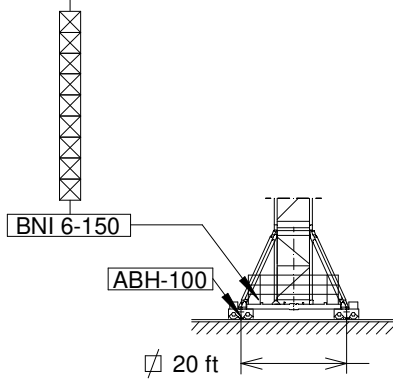


(H_{SR}) ESTACIONARIA 3 / STATIONARY 3

▽▽	H(ft)	☒	☐
197 - 98	196	9	-

▽▽	H(ft)	☒	☐
197 - 98	149	7	1

▽▽	H(ft)	☒	☐
197 - 98	179	9	-

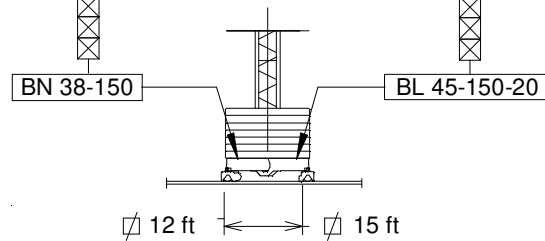
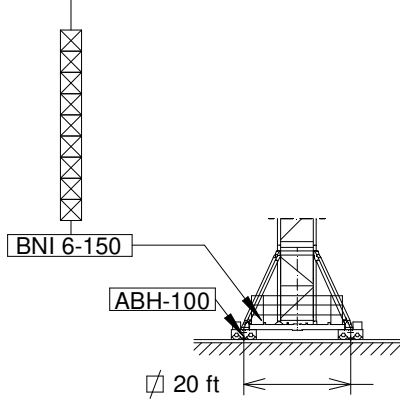


(H_{SR}) TRASLACIÓN / TRAVELLING

▽▽	H(ft)	☒	☐
197 - 98	197	9	-

▽▽	H(ft)	☒	☐
197 - 98	150	7	1

▽▽	H(ft)	☒	☐
197 - 98	180	9	-



- ☐ T3-150
- ☒ T6-150
TD6-150
- ☒ T12-150

H_{SR/DR} = H_{SR}-1.6 ft

H_{SR} = Altura máxima bajo gancho sin arriostar (ft) / Maximum height under hook without fastening (ft)

BNI 6-150	161.20.000
BN 38-150	161.20.800

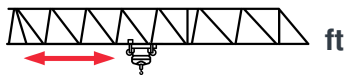
BL 45-150-20	171.20.200
--------------------	------------

AN 150	161.21.000
ABH 100	201.23.000



CARGAS / LOADS

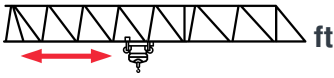
J165.8



SR - 8800 lb		ft								
8800 lb @...(ft)	98	115	131	148	164	180	197	EXTRA Lift		
197	98 106	8750 8800	7400 8000	6300 6900	5500 6000	4800 5300	4300 4700	3900 4200	+	
180	110 119	8800 8800	8400 8800	7200 7900	6300 6900	5600 6100	5000 5400	— —	+	
164	122 132	8800 8800	8800 8800	8100 8800	7100 7700	6300 6900	— —	— —	+	
148	133 144	8800 8800	8800 8800	8800 8800	7800 8500	— —	— —	— —	+	
131	131 131	8800 8800	8800 8800	8800 8800	— —	— —	— —	— —	+	
115	115 115	8800 8800	8800 8800	— —	— —	— —	— —	— —	+	
98	98 98	8800 8800	— —	— —	— —	— —	— —	— —	+	

CARGAS / LOADS

J165.8



SR / DR 8800 / 17600 lb		ft									
8800 lb 17600 lb @...(ft)	66	82	98	115	131	148	164	180	197	EXTRA Lift	
197	95 - 51 99 - 53	8800 - 13400 8800 - 14000	8800 - 10400 8800 - 10900	8400 8800 - 8900	7000 7500	6000 6400	5200 5600	4500 4900	4000 4300	3500 3900	+
180	106 - 57 112 - 59	8800 - 15200 8800 - 15900	8800 - 11900 8800 - 12500	8800 - 9700 8800 - 10200	8100 8600	6900 7400	6000 6500	5200 5700	4600 5100	— —	+
164	118 - 63 125 - 66	8800 - 17000 8800 - 17600	8800 - 13300 8800 - 14000	8800 - 10800 8800 - 11500	8800 - 9100 8800 - 9700	7800 8400	6800 7400	6000 6500	— —	— —	+
148	129 - 69 137 - 72	8800 - 17600 8800 - 17600	8800 - 14600 8800 - 15300	8800 - 11900 8800 - 12700	8800 - 10000 8800 - 10700	8600 8800 - 9300	7500 8200	— —	— —	— —	+
131	131 - 71 131 - 73	8800 - 17600 8800 - 17600	8800 - 14900 8800 - 15700	8800 - 12200 8800 - 12900	8800 - 10300 8800 - 11000	8800 8800 - 9500	— —	— —	— —	— —	+
115	115 - 71 115 - 74	8800 - 17600 8800 - 17600	8800 - 15100 8800 - 15800	8800 - 12300 8800 - 13000	8800 - 10400 8800 - 11000	— —	— —	— —	— —	— —	+
98	98 - 71 98 - 74	8800 - 17600 8800 - 17600	8800 - 15100 8800 - 15800	8800 - 12300 8800 - 13000	— —	— —	— —	— —	— —	— —	+

Datos válidos para / Valid data for



H ≤ 164 ft

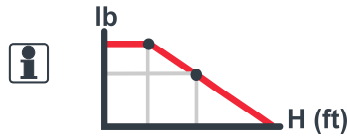
H



Reservado el derecho a modificaciones sin previo aviso. Declinamos toda responsabilidad derivada de la información proporcionada / Subject to modification, without prior notice. This information is supplied without liability



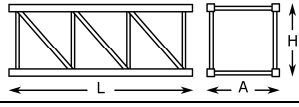
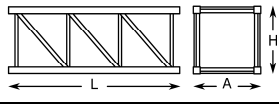
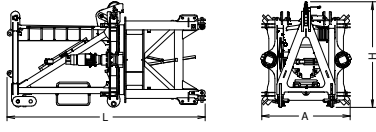
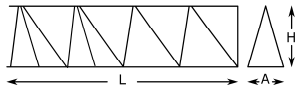
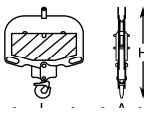
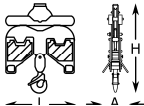
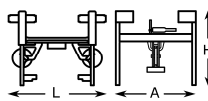
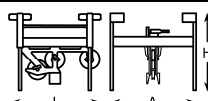
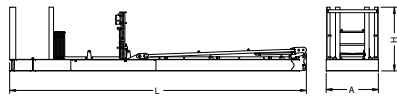
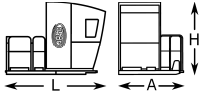
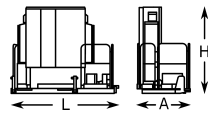
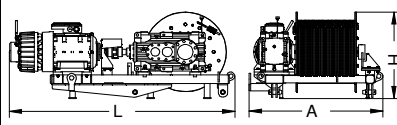
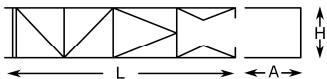
EC3366VF 24,3 kW		*EC60180VF 45 kW	
	H ≤ SR 682 ft DR 341 ft		H ≤ SR 1155 ft DR 577 ft

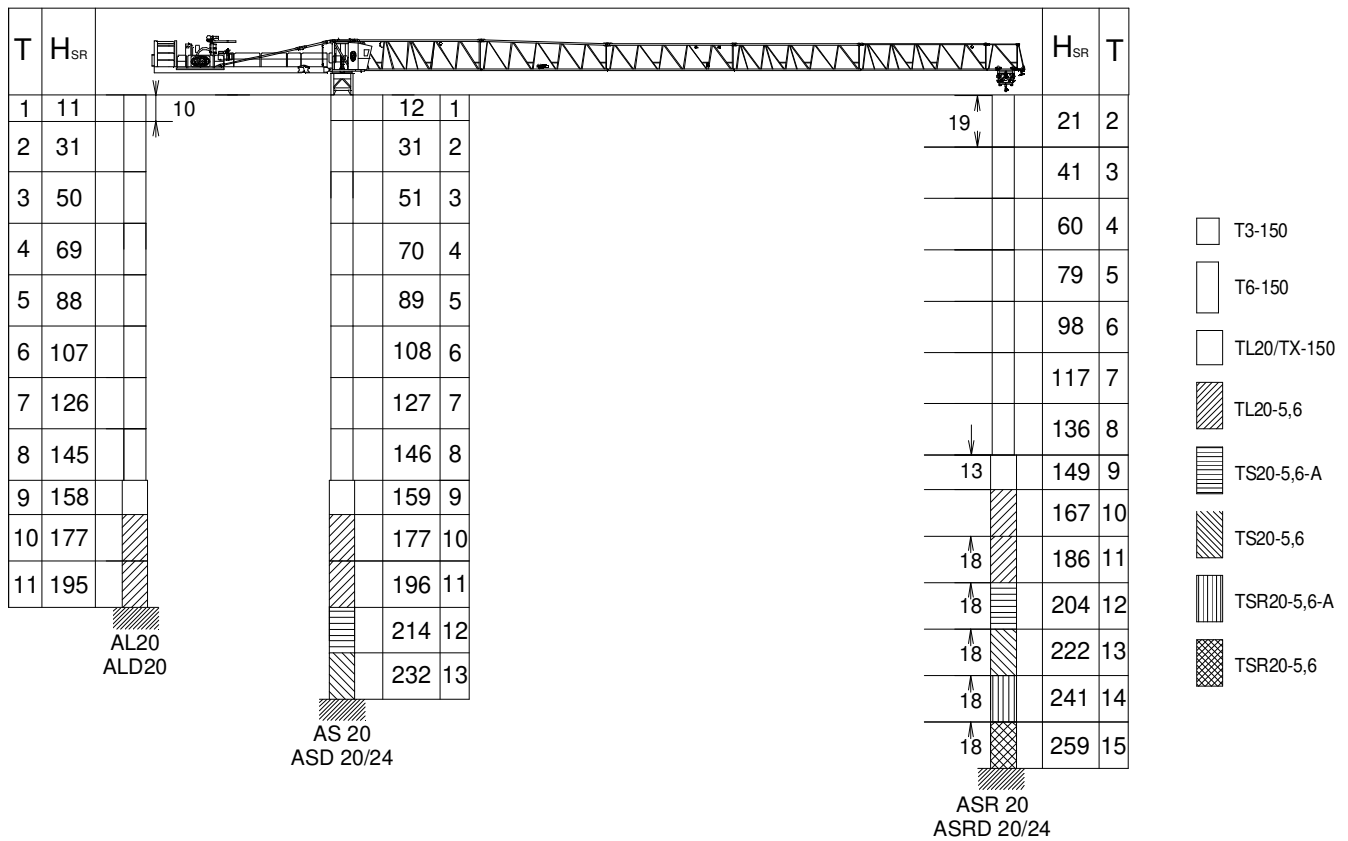


OG1508VF 2 x 5,5 kW	TC460VF 3 kW	TG2020VF 2 x 7,3 kW
0...0,8 r/min sl/min	8800 lb 0...197 ft/min 17600 lb 0...98 ft /min	0...66 ft/min

3~ 400V 50Hz
 480V 60Hz

KVA			
EC3366VF	31	38	45
EC60180VF	43	56	69

		L (ft)	A (ft)	H (ft)	P/W (lb)	
Torre inferior / Lower tower	TI-6-150		20.3	7.2	7.2	7790
Torre / Tower	T6-150		20.3	6.1	6.1	6080
	TD6-150		20.3	6.1	6.1	6460
	T3-150		10.7	6.1	6.1	3420
	T12-150		39.4	6.1	6.1	11420
Torre asiento pista + punta de torre + orientación Slewing table + tower head + slewing mechanism			14.2	6.9	7.8	13230
Tramo de pluma Jib section	P20-01		33.7	4.2	7.4	4540
	P20-02+tr		33.7	4.0	7.2	4110
	P20-03		33.6	3.7	7.2	2900
	P15-04		33.2	3.7	5.5	1810
	P15-05		33.4	3.7	5.5	1330
	P15-06		17.0	3.7	5.5	650
	P15-07		17.0	3.7	5.4	490
PP15-1	2.9	4.2	6.4	290		
Polipasto / Hook assembly	SR		3.0	0.7	3.3	370
	SR / DR		3.1	1.2	4.0	620
Carro / Trolley	SR		5.1	6.4	6.2	670
	SR / DR		5.0	6.4	6.2	780
Contrapluma / Counterjib			39.9	8.8	6.5	9170
Plataforma y cabina / Platform and cabin			11.5	6.8	7.9	2470
Armario eléctrico y plataforma			9.0	4.3	7.2	2200
Soporte y elevación (sin cable) Support and hoisting (without rope)			8.0	4.8	3.2	3750
Estructura torre de montaje Jacking cage structure			33.9	7.9	7.6	7720



T: Torre / Tower
H: Altura / Height

$$H_{SR/DR} = H_{SR} - 1.6 \text{ ft}$$

TL20/TX-150.....	161.36.000	AL 20.....	153.21.800
TL20-5,6.....	204.31.400	ALD 20.....	160.21.250
TS20-5,6A.....	204.31.500	AS 20.....	160.21.010
TS20-5,6.....	204.31.200	ASD 20/24.....	160.21.080
TSR20-5,6A.....	206.31.300	ASR 20.....	160.21.200
TSR20-5,6.....	206.31.000	ASRD 20/24.....	156.21.000



Otras configuraciones de torre / Other tower configuration

TRANSPORTE / TRANSPORT



Viento fuera de servicio / Out of service wind

Consultar / Consult

En servicio / In service

Fuera de servicio / Out of service

Opcional / Optional



Ctra./ Rd. Madrid - Irún - Km. 415 - 20213 IDIAZABAL (Gipuzkoa) - ESPAÑA / SPAIN
 P.O. Box, 23 - 20.200 - BEASAIN - E-mail: jaso@jaso.com
 Tel. +34 943 - 18 70 00 • Fax. +34 943 - 18 70 20
www.jaso.com

11/04/2025

FEM 1001

DELEGACIÓN / DEALER