



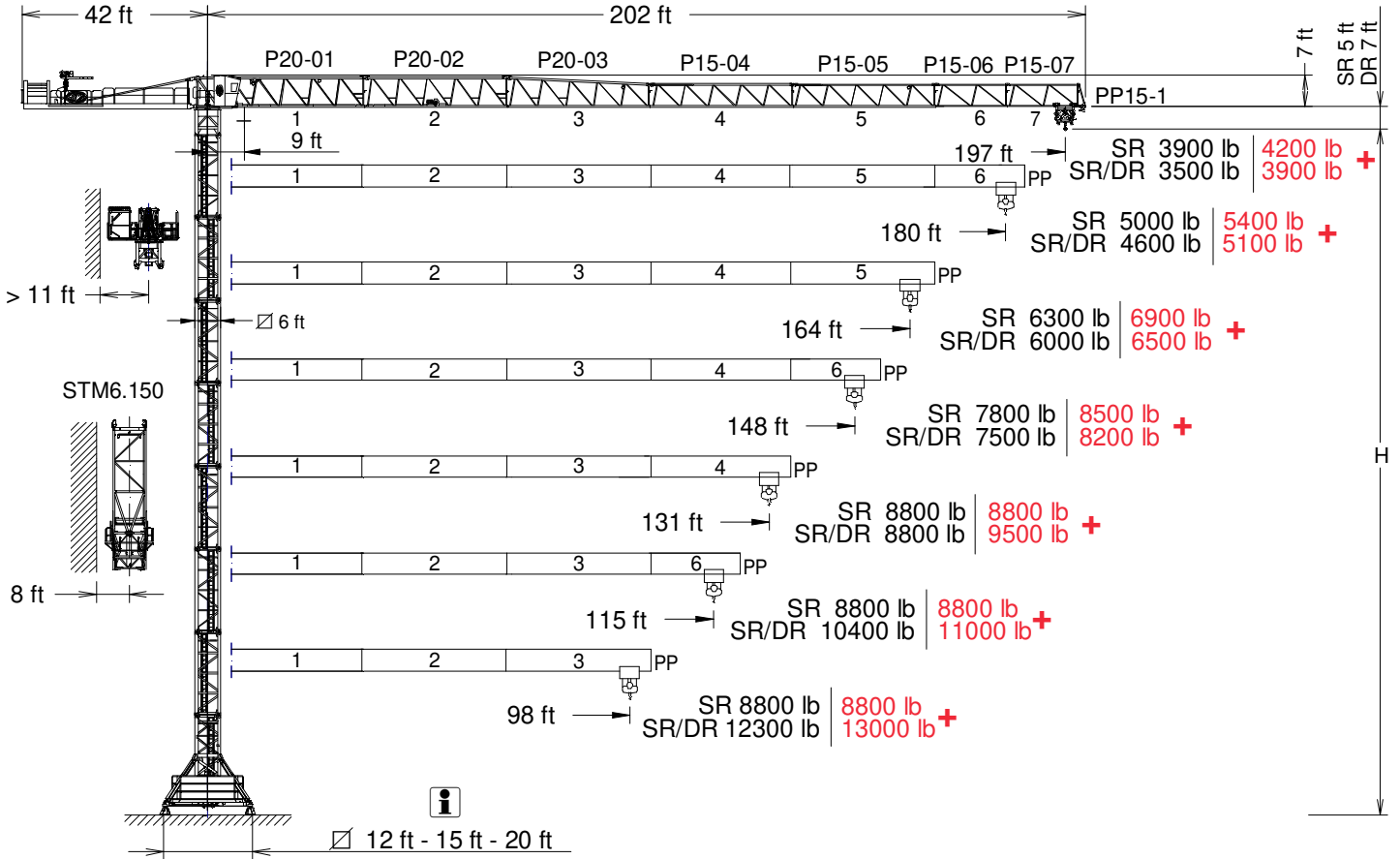
EN 14439
C25

J165.8

GRUA TORRE / TOWER CRANE

FEM 1005 - C25

UNE-EN-ISO 9001



*OPTIONAL EXTRA LIFT

P20-01	173.40.050	P15-04	173.43.000	P15-07	173.46.000	T6-150	161.31.000
P20-02	173.41.000	P15-05	173.44.000	PP15-1	173.47.000	TD6-150	161.31.700
P20-03	173.42.000	P15-06	173.45.000	T3-150	161.32.000	T12-150	161.31.500

CUSTOMIZE YOUR CRANE

OPTIMUS
line JASD

EXTRA Lift	OPTI Cubo	TC Diagnosis SYSTEM	CLIMBING Solution	SAFETY Pack	Customization	ECO Mode	COMFORT Cabin	HIGH POWER Motors	JL25 Tower Crane Elevator	SMARTLINK BE SMART keep control



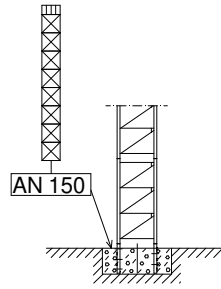
Reservado el derecho a modificaciones sin previo aviso. Declinamos toda responsabilidad derivada de la información proporcionada / Subject to modification, without prior notice. This information is supplied without liability

11/04/2025

SR

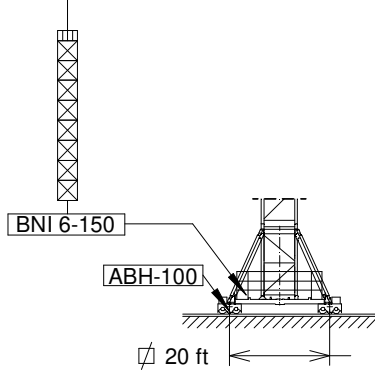
(H_{SR}) ESTACIONARIA 1 / STATIONARY 1

▽△	H(ft)	☒	☐
197	155	8	-
180 - 98	164	8	1

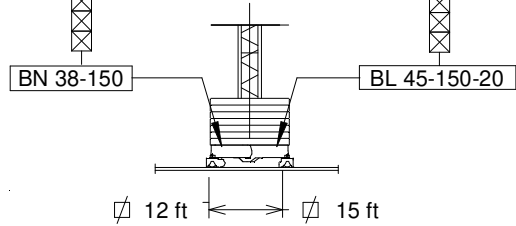


(H_{SR}) ESTACIONARIA 3 / STATIONARY 3

▽△	H(ft)	☒	☐
197	177	8	-
180 - 98	186	8	1



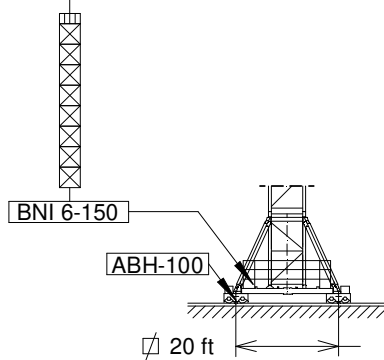
▽△	H(ft)	☒	☐
197-98	140	7	-



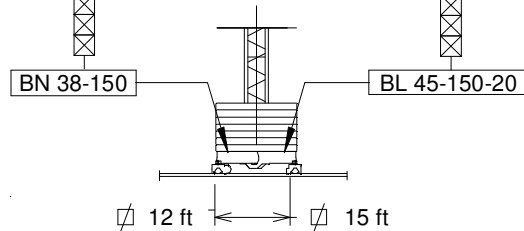
▽△	H(ft)	☒	☐
197	160	8	-
180 - 98	169	8	1

(H_{SR}) TRASLACION / TRAVELLING

▽△	H(ft)	☒	☐
197	178	8	-
180 - 98	187	8	1



▽△	H(ft)	☒	☐
197-98	141	7	-



▽△	H(ft)	☒	☐
197	161	8	-
180 - 98	170	8	1

- ☐ T3-150
- ☒ T6-150
TD6-150
- ☒ T12-150

$H_{SR/DR} = H_{SR} - 1.6 \text{ ft}$

H_{SR} = Altura máxima bajo gancho sin arristrar (ft) / Maximum height under hook without fastening (ft)

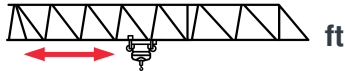
BNI 6-150 161.20.000
BN 38-150 161.20.800

BL 45-150-20 171.20.200

AN 150 161.21.000
ABH 100 201.23.000

CARGAS / LOADS

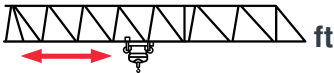
J165.8



SR - 8800 lb										EXTRA Lift
8800 lb @...(ft)	98	115	131	148	164	180	197			
197	98	8750	7400	6300	5500	4800	4300	3900		
	106	8800	8000	6900	6000	5300	4700	4200	+	
180	110	8800	8400	7200	6300	5600	5000	—		
	119	8800	8800	7900	6900	6100	5400	—	+	
164	122	8800	8800	8100	7100	6300	—	—		
	132	8800	8800	8800	7700	6900	—	—	+	
148	133	8800	8800	8800	7800	—	—	—		
	144	8800	8800	8800	8500	—	—	—	+	
131	131	8800	8800	8800	—	—	—	—		
	131	8800	8800	8800	—	—	—	—	+	
115	115	8800	8800	—	—	—	—	—		
	115	8800	8800	—	—	—	—	—	+	
98	98	8800	—	—	—	—	—	—		
	98	8800	—	—	—	—	—	—	+	

CARGAS / LOADS

J165.8



SR / DR 8800 / 17600 lb											EXTRA Lift
8800 lb 17600 lb @...(ft)	66	82	98	115	131	148	164	180	197		
197	95 - 51	8800 - 13400	8800 - 10400	8400	7000	6000	5200	4500	4000	3500	
	99 - 53	8800 - 14000	8800 - 10900	8800 - 8900	7500	6400	5600	4900	4300	3900	+
180	106 - 57	8800 - 15200	8800 - 11900	8800 - 9700	8100	6900	6000	5200	4600	—	
	112 - 59	8800 - 15900	8800 - 12500	8800 - 10200	8600	7400	6500	5700	5100	—	+
164	118 - 63	8800 - 17000	8800 - 13300	8800 - 10800	8800 - 9100	7800	6800	6000	—	—	
	125 - 66	8800 - 17600	8800 - 14000	8800 - 11500	8800 - 9700	8400	7400	6500	—	—	+
148	129 - 69	8800 - 17600	8800 - 14600	8800 - 11900	8800 - 10000	8600	7500	—	—	—	
	137 - 72	8800 - 17600	8800 - 15300	8800 - 12700	8800 - 10700	8800 - 9300	8200	—	—	—	+
131	131 - 71	8800 - 17600	8800 - 14900	8800 - 12200	8800 - 10300	8800	—	—	—	—	
	131 - 73	8800 - 17600	8800 - 15700	8800 - 12900	8800 - 11000	8800 - 9500	—	—	—	—	+
115	115 - 71	8800 - 17600	8800 - 15100	8800 - 12300	8800 - 10400	—	—	—	—	—	
	115 - 74	8800 - 17600	8800 - 15800	8800 - 13000	8800 - 11000	—	—	—	—	—	+
98	98 - 71	8800 - 17600	8800 - 15100	8800 - 12300	—	—	—	—	—	—	
	98 - 74	8800 - 17600	8800 - 15800	8800 - 13000	—	—	—	—	—	—	+

Datos válidos para / Valid data for



H ≤ 164 ft

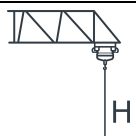
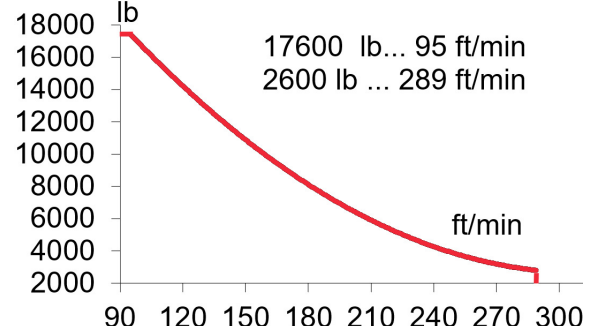
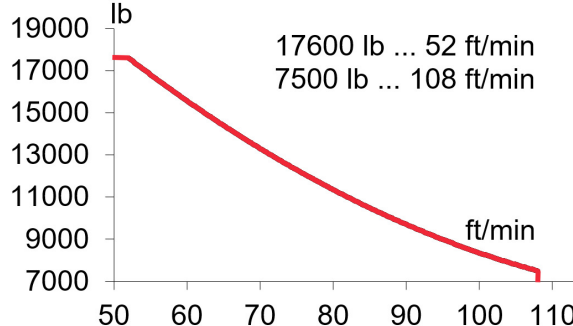
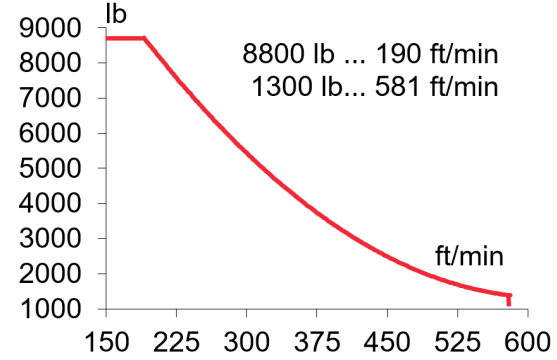
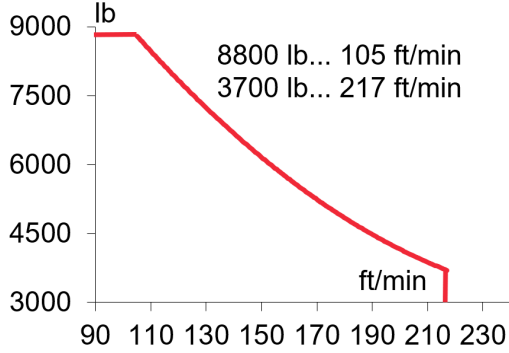


Reservado el derecho a modificaciones sin previo aviso. Declinamos toda responsabilidad derivada de la información proporcionada / Subject to modification, without prior notice. This information is supplied without liability



EC3366VF
24,3 kW

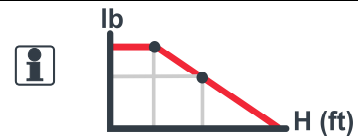
***EC60180VF**
45 kW



H ≤ SR 682 ft
DR 341 ft



H ≤ SR 1155 ft
DR 577 ft



OG1508VF
2 x 5,5 kW

TC460VF
3 kW

TG2020VF
2 x 7,3 kW

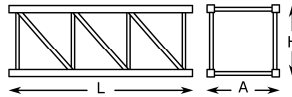
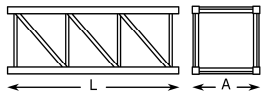
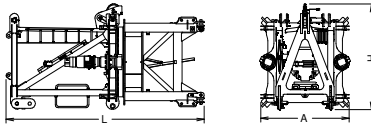
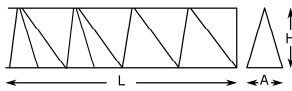
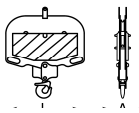
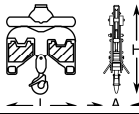
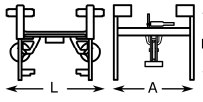
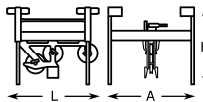
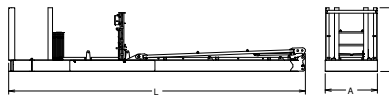
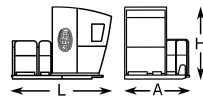
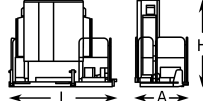
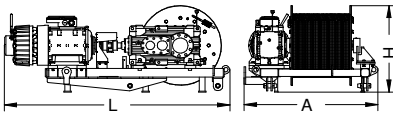
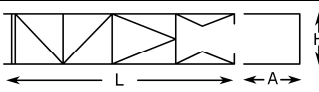
0...0,8
r/min
sl/min

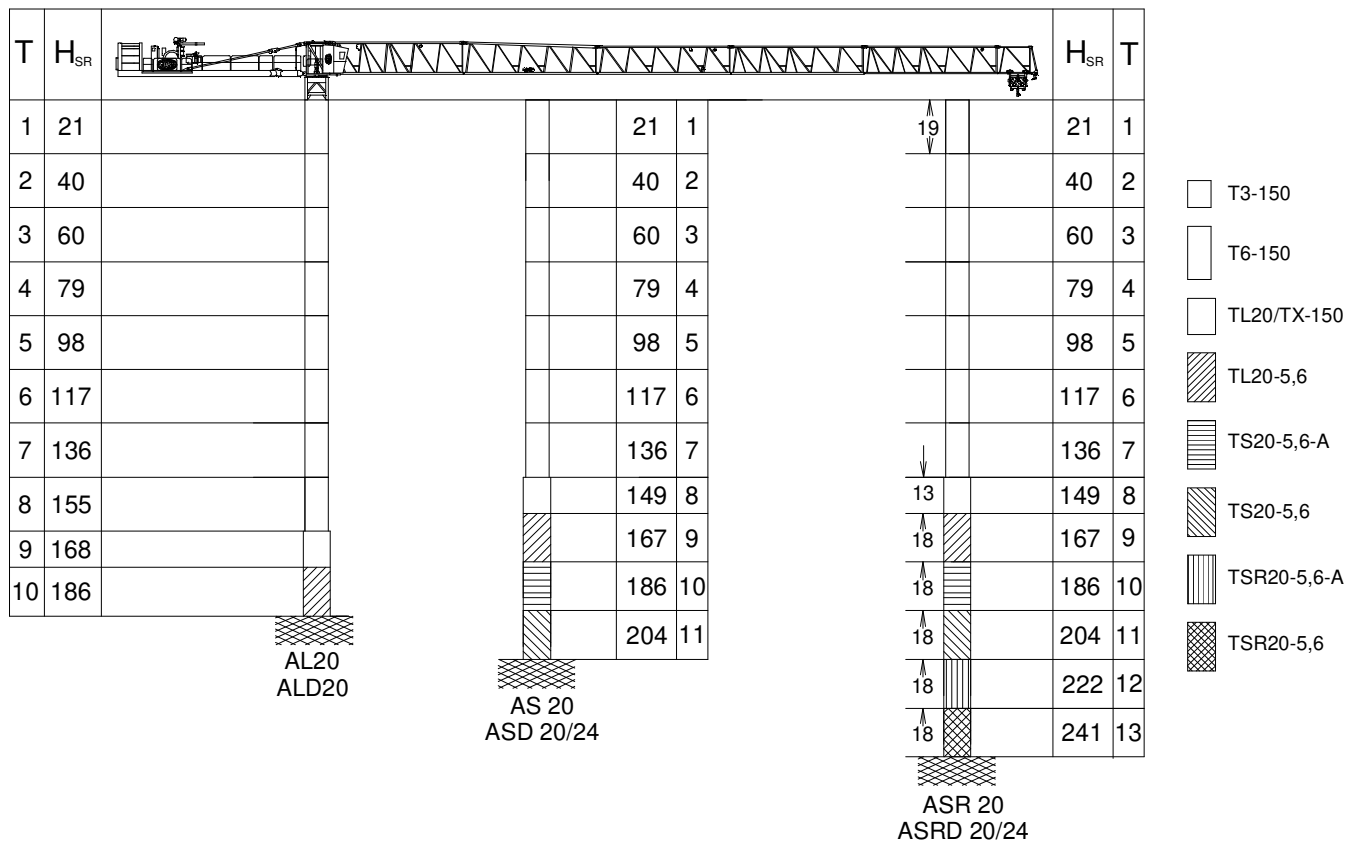
8800 lb 0...197 ft/min
17600 lb 0...98 ft/min

0...66
ft/min

⚡ 3~ 400V 50Hz
480V 60Hz

KVA			
EC3366VF	31	38	45
EC60180VF	43	56	69

		L (ft)	A (ft)	H (ft)	P/W (lb)	
Torre inferior / Lower tower	TI-6-150		20.3	7.2	7.2	7790
Torre / Tower	T6-150		20.3	6.1	6.1	6080
	TD6-150		20.3	6.1	6.1	6460
	T3-150		10.7	6.1	6.1	3420
	T12-150		39.4	6.1	6.1	11420
Torre asiento pista + punta de torre + orientación Slewing table + tower head + slewing mechanism			14.2	6.9	7.8	13230
Tramo de pluma Jib section	P20-01		33.7	4.2	7.4	4540
	P20-02+tr		33.7	4.0	7.2	4110
	P20-03		33.6	3.7	7.2	2900
	P15-04		33.2	3.7	5.5	1810
	P15-05		33.4	3.7	5.5	1330
	P15-06		17.0	3.7	5.5	650
	P15-07		17.0	3.7	5.4	490
	PP15-1		2.9	4.2	6.4	290
Polipasto / Hook assembly	SR		3.0	0.7	3.3	370
	SR / DR		3.1	1.2	4.0	620
Carro / Trolley	SR		5.1	6.4	6.2	670
	SR / DR		5.0	6.4	6.2	780
Contrapluma / Counterjib			39.9	8.8	6.5	9170
Plataforma y cabina / Platform and cabin			11.5	6.8	7.9	2470
Armario eléctrico y plataforma			9.0	4.3	7.2	2200
Soporte y elevación (sin cable) Support and hoisting (without rope)			8.0	4.8	3.2	3750
Estructura torre de montaje Jacking cage structure			33.9	7.9	7.6	7720



T: Torre / Tower
H: Altura / Height

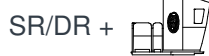
$$H_{SR/DR} = H_{SR} - 1.6 \text{ ft}$$

TL20/TX-150.....	161.36.000
TL20-5,6.....	204.31.400
TS20-5,6A.....	204.31.500
TS20-5,6.....	204.31.200
TSR20-5,6A.....	206.31.300
TSR20-5,6.....	206.31.000

AL 20.....	153.21.800
ALD 20.....	160.21.250
AS 20.....	160.21.010
ASD 20/24.....	160.21.080
ASR 20.....	160.21.200
ASRD 20/24.....	156.21.000

Otras configuraciones de torre / Other tower configuration

TRANSPORTE / TRANSPORT



Viento fuera de servicio / Out of service wind

Consultar / Consult

En servicio / In service

Fuera de servicio / Out of service

Opcional / Optional



Ctra./ Rd. Madrid – Irún - Km. 415 - 20213 IDIAZABAL (Gipuzkoa) - ESPAÑA / SPAIN
 P.O. Box, 23 - 20.200 - BEASAIN - E-mail: jaso@jaso.com
 Tel. +34 943 - 18 70 00 • Fax. +34 943 - 18 70 20
www.jaso.com

11/04/2025

FEM 1005 - C25
 DELEGACIÓN / DEALER