



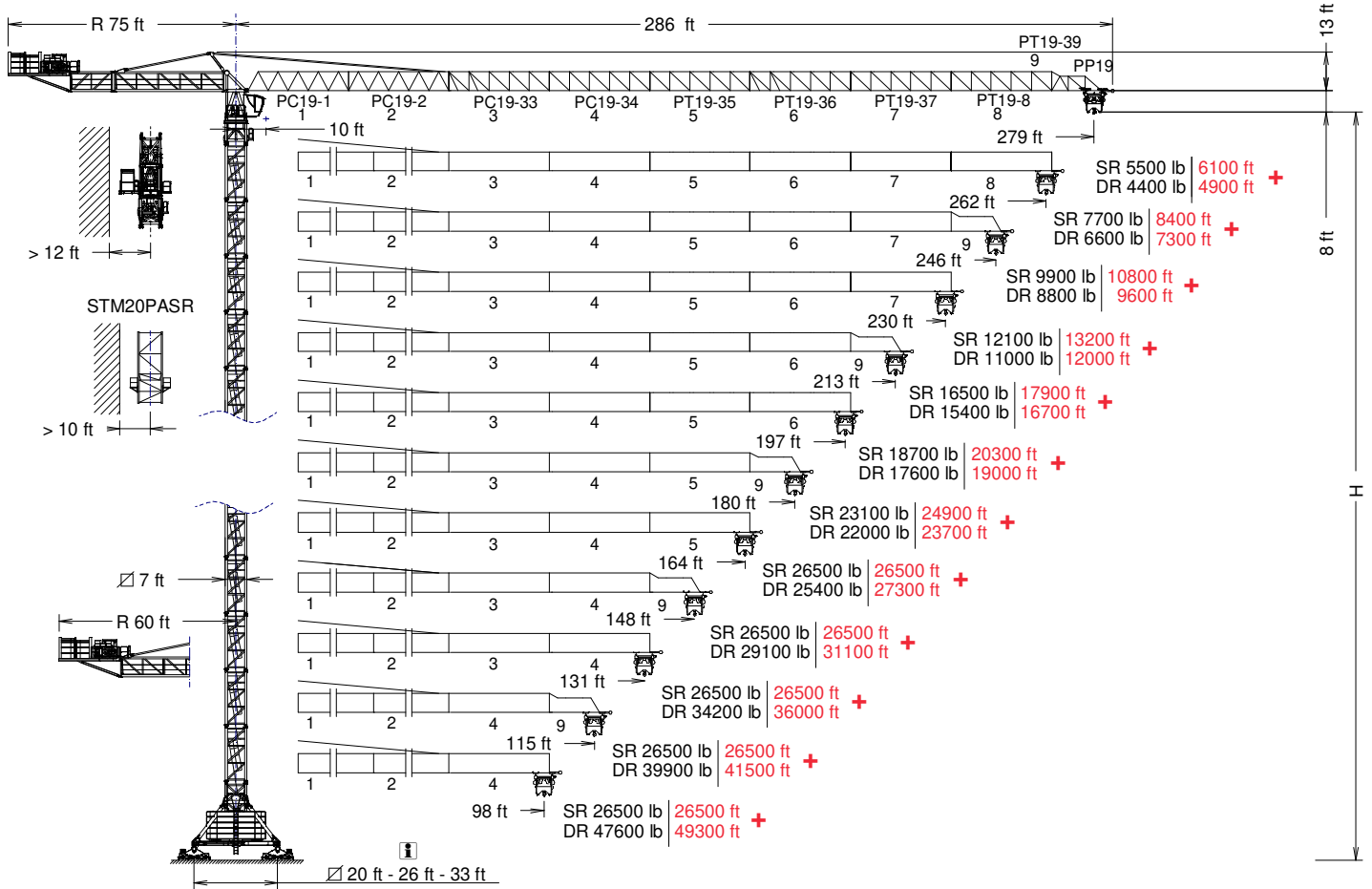
UNE 58-101
FEM 1001

J560

GRUA TORRE / TOWER CRANE

FEM 1001

UNE-EN-ISO 9001



*OPTIONAL EXTRA LIFT

H= Altura máxima bajo gancho sin arriostrar (m). / Maximum height under hook without fastening (m).

| | | | |
|------------------------|------------------------|--------------------------|---------------------------|
| PC19-1.....163.40.000 | PT19-35.....163.44.500 | PT19-39.....163.48.200 | TR24/TSR20.....204.36.500 |
| PC19-2.....163.41.000 | PT19-36.....163.45.500 | PP19.....163.48.500 | TR24-5,6.....206.32.000 |
| PC19-33.....163.42.500 | PT19-37.....163.46.500 | TSR20.....206.31.200 | TRD24-5,6.....206.32.300 |
| PC19-34.....163.43.500 | PT19-8.....163.47.000 | TSR20-5,6.....206.31.000 | |

CUSTOMIZE YOUR CRANE

OPTIMUS
line JASD

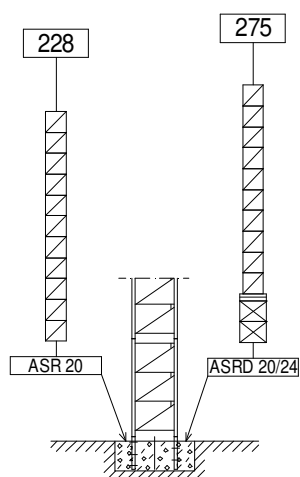
| | | | | | | | | | | |
|------------|-----------|---------------------|-------------------|-------------|---------------|----------|---------------|-------------------|---------------------------|------------------------------------|
| | | | | | | | | | | |
| EXTRA Lift | OPTI Cube | TC Diagnosis SYSTEM | CLIMBING Solution | SAFETY Pack | Customization | ECO Mode | COMFORT Cabin | HIGH POWER Motors | JL25 Tower Crane Elevator | SMARTLINK BE SMART keep control |



Reservado el derecho a modificaciones sin previo aviso. Declinamos toda responsabilidad derivada de la información proporcionada / Subject to modification, without prior notice. This information is supplied without liability

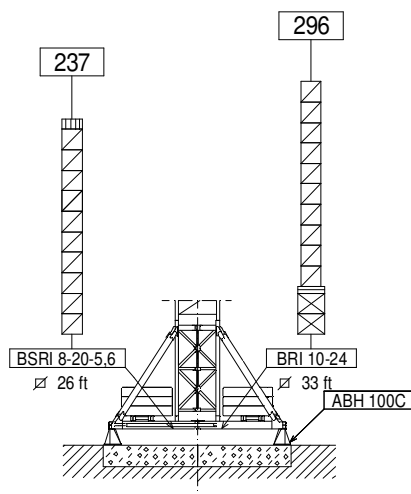
31/03/2025

(H) ESTACIONARIA 1 / STATIONARY 1



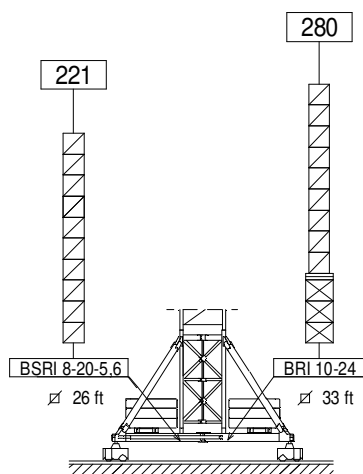
- ▣ TSR20
- ▧ TSR20-5,6
- ▤ TR24/TSR20
- ⊠ TR24-5,6
TRD24-5,6

(H) ESTACIONARIA 3 / STATIONARY 3



- ▣ TSR20
- ▧ TSR20-5,6
- ▤ TR24/TSR20
- ⊠ TR24-5,6
TRD24-5,6

(H) TRASLACION / TRAVELLING



- ▣ TSR20
- ▧ TSR20-5,6
- ▤ TR24/TSR20
- ⊠ TR24-5,6
TRD24-5,6


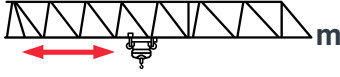

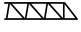
ASR20 160.21.200
ASRD 20/24 156.21.000

BSRI 8-20-5,6 204.20.000
BRI 10-24 156.20.500

ABH 100C 170.23.000


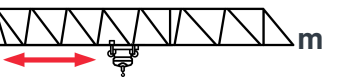

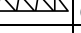
CARGAS / LOADS


J560

|  ST-SR 26500 lb | |  | | | | | | | | | | | | |  EXTRA Lift |
|----------------------------------------------------------------------------------------------------------------------|---------------------|-----------------------------------------------------------------------------------|-------|-------|-------|-------|-------|-------|-------|-------|-------|-------|------|------|----------------------------------------------------------------------------------------------------------|
|  | 26500 lb @ ... (ft) | 82 | 98 | 115 | 131 | 148 | 164 | 180 | 197 | 213 | 230 | 246 | 262 | 279 | |
| 279 | 91 | 26500 | 24000 | 19900 | 16800 | 14500 | 12600 | 11000 | 9700 | 8600 | 7700 | 6900 | 6100 | 5500 | |
| | 97 | 26500 | 25900 | 21500 | 18200 | 15700 | 13600 | 12000 | 10600 | 9400 | 8400 | 7500 | 6700 | 6100 | + |
| 262 | 104 | 26500 | 26500 | 23500 | 20000 | 17300 | 15100 | 13300 | 11800 | 10500 | 9500 | 8500 | 7700 | — | |
| | 111 | 26500 | 26500 | 25400 | 21600 | 18700 | 16300 | 14400 | 12800 | 11500 | 10300 | 9300 | 8400 | — | + |
| 246 | 115 | 26500 | 26500 | 26500 | 22600 | 19600 | 17200 | 15200 | 13500 | 12100 | 11000 | 9900 | — | — | |
| | 123 | 26500 | 26500 | 26500 | 24400 | 21200 | 18600 | 16400 | 14700 | 13200 | 11900 | 10800 | — | — | + |
| 230 | 124 | 26500 | 26500 | 26500 | 24600 | 21400 | 18800 | 16700 | 14900 | 13400 | 12100 | — | — | — | |
| | 132 | 26500 | 26500 | 26500 | 26500 | 23100 | 20300 | 18100 | 16200 | 14600 | 13200 | — | — | — | + |
| 213 | 145 | 26500 | 26500 | 26500 | 26500 | 25900 | 22900 | 20400 | 18300 | 16500 | — | — | — | — | |
| | 155 | 26500 | 26500 | 26500 | 26500 | 26500 | 24700 | 22000 | 19800 | 17900 | — | — | — | — | + |
| 197 | 148 | 26500 | 26500 | 26500 | 26500 | 26500 | 23400 | 20900 | 18700 | — | — | — | — | — | |
| | 158 | 26500 | 26500 | 26500 | 26500 | 26500 | 25300 | 22600 | 20300 | — | — | — | — | — | + |
| 180 | 161 | 26500 | 26500 | 26500 | 26500 | 26500 | 25900 | 23100 | — | — | — | — | — | — | |
| | 172 | 26500 | 26500 | 26500 | 26500 | 26500 | 26500 | 24900 | — | — | — | — | — | — | + |
| 164 | 164 | 26500 | 26500 | 26500 | 26500 | 26500 | 26500 | — | — | — | — | — | — | — | |
| | 164 | 26500 | 26500 | 26500 | 26500 | 26500 | 26500 | — | — | — | — | — | — | — | + |
| 148 | 148 | 26500 | 26500 | 26500 | 26500 | 26500 | — | — | — | — | — | — | — | — | |
| | 148 | 26500 | 26500 | 26500 | 26500 | 26500 | — | — | — | — | — | — | — | — | + |
| 131 | 131 | 26500 | 26500 | 26500 | 26500 | — | — | — | — | — | — | — | — | — | |
| | 131 | 26500 | 26500 | 26500 | 26500 | — | — | — | — | — | — | — | — | — | + |
| 115 | 115 | 26500 | 26500 | 26500 | — | — | — | — | — | — | — | — | — | — | |
| | 115 | 26500 | 26500 | 26500 | — | — | — | — | — | — | — | — | — | — | + |
| 98 | 98 | 26500 | 26500 | — | — | — | — | — | — | — | — | — | — | — | |
| | 98 | 26500 | 26500 | — | — | — | — | — | — | — | — | — | — | — | + |

CARGAS / LOADS

J560

|  ST-DR 52900 lb | |  | | | | | | | | | | | | |  EXTRA Lift | |
|------------------------------------------------------------------------------------------------------------------------|---------------------|-------------------------------------------------------------------------------------|-------|-------|-------|-------|-------|-------|-------|-------|-------|-------|------|------|------------------------------------------------------------------------------------------------------------|---|
|  | 52900 lb @ ... (ft) | 66 | 82 | 98 | 115 | 131 | 148 | 164 | 180 | 197 | 213 | 230 | 246 | 262 | 279 | |
| 279 | 49 | 37500 | 28900 | 23100 | 19000 | 15900 | 13500 | 11600 | 10000 | 8700 | 7500 | 6600 | 5800 | 5000 | 4400 | |
| | 50 | 39000 | 30100 | 24200 | 19900 | 16700 | 14200 | 12300 | 10600 | 9300 | 8100 | 7200 | 6300 | 5600 | 4900 | + |
| 262 | 55 | 43800 | 33900 | 27300 | 22600 | 19000 | 16200 | 14000 | 12300 | 10700 | 9500 | 8400 | 7400 | 6600 | — | |
| | 57 | 45500 | 35300 | 28500 | 23700 | 20000 | 17200 | 14900 | 13100 | 11500 | 10200 | 9100 | 8100 | 7300 | — | + |
| 246 | 61 | 49000 | 38000 | 30700 | 25500 | 21600 | 18600 | 16100 | 14100 | 12500 | 11100 | 9900 | 8800 | — | — | |
| | 63 | 50800 | 39600 | 32100 | 26700 | 22700 | 19600 | 17100 | 15100 | 13400 | 11900 | 10700 | 9600 | — | — | + |
| 230 | 66 | 52900 | 41300 | 33400 | 27800 | 23600 | 20300 | 17700 | 15600 | 13800 | 12300 | 11000 | — | — | — | |
| | 68 | 52900 | 43000 | 34900 | 29200 | 24900 | 21500 | 18850 | 16700 | 14800 | 13300 | 12000 | — | — | — | + |
| 213 | 77 | 52900 | 49400 | 40200 | 33600 | 28700 | 24900 | 21800 | 19300 | 17200 | 15400 | — | — | — | — | |
| | 80 | 52900 | 51300 | 41900 | 35200 | 30200 | 26300 | 23100 | 20600 | 18500 | 16700 | — | — | — | — | + |
| 197 | 78 | 52900 | 50400 | 41000 | 34400 | 29300 | 25400 | 22300 | 19800 | 17600 | — | — | — | — | — | |
| | 81 | 52900 | 52300 | 42800 | 36000 | 30900 | 27000 | 23800 | 21200 | 19000 | — | — | — | — | — | + |
| 180 | 86 | 52900 | 52900 | 45200 | 37900 | 32500 | 28200 | 24800 | 22000 | — | — | — | — | — | — | |
| | 89 | 52900 | 52900 | 47100 | 39800 | 34300 | 30000 | 26500 | 23700 | — | — | — | — | — | — | + |
| 164 | 87 | 52900 | 52900 | 46100 | 38700 | 33100 | 28800 | 25400 | — | — | — | — | — | — | — | |
| | 90 | 52900 | 52900 | 48000 | 40600 | 35100 | 30700 | 27300 | — | — | — | — | — | — | — | + |
| 148 | 88 | 52900 | 52900 | 46500 | 39100 | 33500 | 29100 | — | — | — | — | — | — | — | — | |
| | 91 | 52900 | 52900 | 48500 | 41000 | 35450 | 31100 | — | — | — | — | — | — | — | — | + |
| 131 | 89 | 52900 | 52900 | 47500 | 39900 | 34200 | — | — | — | — | — | — | — | — | — | |
| | 93 | 52900 | 52900 | 49400 | 41700 | 36000 | — | — | — | — | — | — | — | — | — | + |
| 115 | 89 | 52900 | 52900 | 47500 | 39900 | — | — | — | — | — | — | — | — | — | — | |
| | 93 | 52900 | 52900 | 49400 | 41500 | — | — | — | — | — | — | — | — | — | — | + |
| 98 | 90 | 52900 | 52900 | 47600 | — | — | — | — | — | — | — | — | — | — | — | |
| | 93 | 52900 | 52900 | 49300 | — | — | — | — | — | — | — | — | — | — | — | + |

Datos válidos para / Valid data for  H ≤ 213 ft

FEM 1001



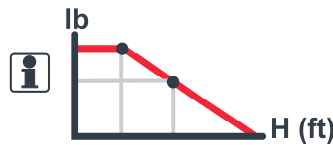
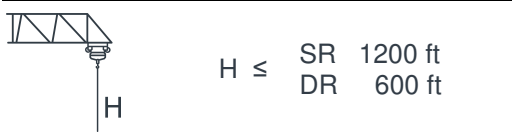
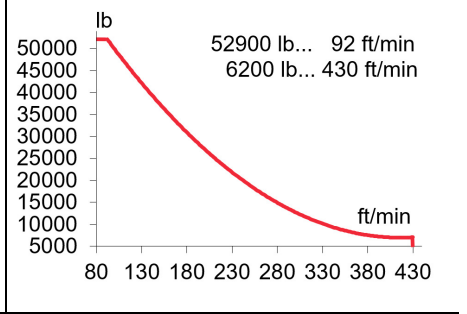
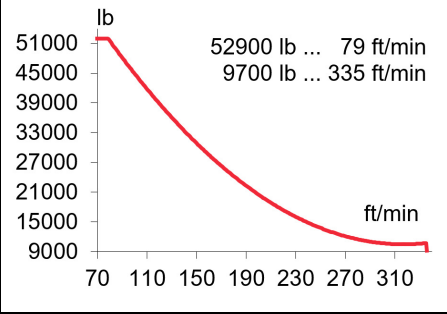
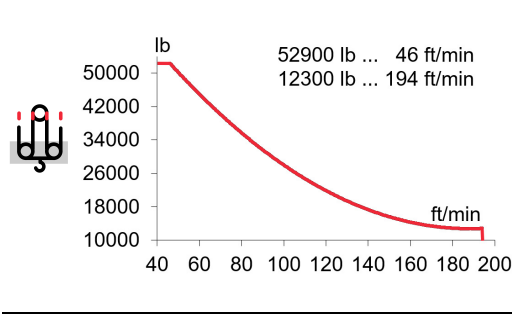
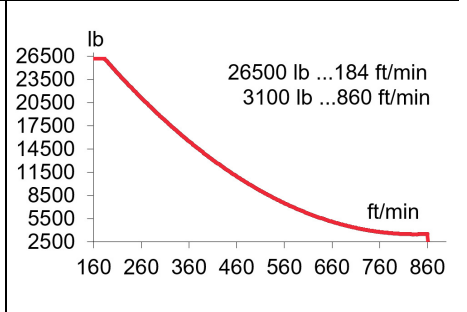
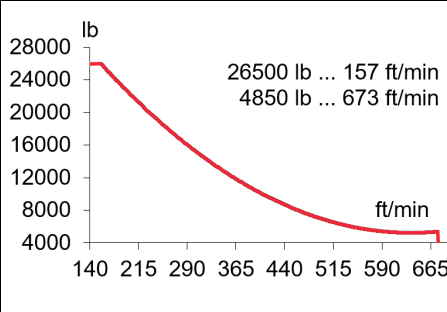
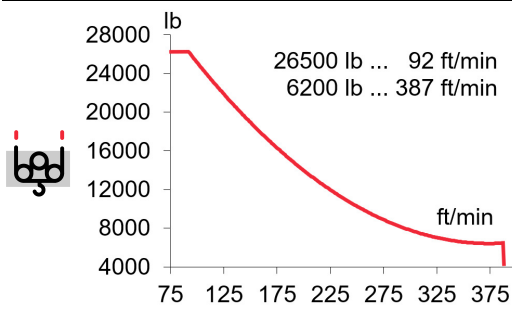
Reservado el derecho a modificaciones sin previo aviso. Declinamos toda responsabilidad derivada de la información proporcionada. Subject to modification, without prior notice. This information is supplied without liability



EC88115VF
65 kW

***EC150205VF**
110 kW

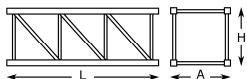

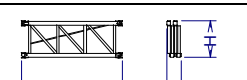
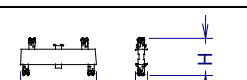
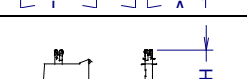
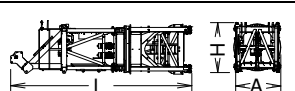
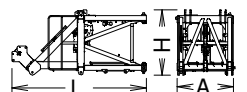
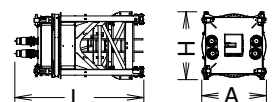
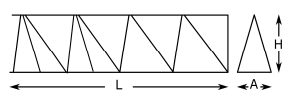
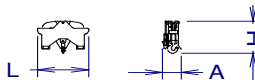
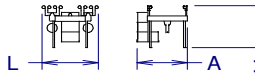
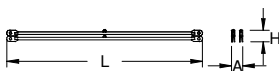
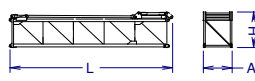
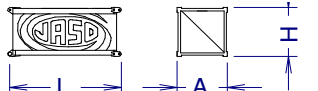
***EC180262VF**
132 kW



| | | | |
|---------------------------------------|----------------------------------------------------------|---------------------------------------|----------------------------------|
| <p>OG4006VF 4 x 7,5 kW</p> | <p>TC15105VF 11 kW</p> | <p>TG4025VF 4 x 7,5 kW</p> | <p>TH4010 29,4 kW</p> |
| 0...0,8 r/min sl/min | 26500 lb 0...344 ft/min 52900 lb 0...171 ft/min | 0...82 ft/min | 2 ft/min |

3 ~ 400V 50Hz
480V 60Hz

| KVA | | | |
|-------------------|-----|-----|-----|
| EC88115VF | 78 | 94 | 109 |
| EC150205VF | 100 | 126 | 153 |
| EC180262VF | 111 | 143 | 174 |

| | | | L [ft] | A [ft] | H [ft] | P / W [lb] |
|-----------------------------------------------------------------------------------------------------------------------|---------------------------------------------------------------------------------------------------------|--------------------------------------------------------------------------------------|-----------------------------------------------------------------------------|--------------------------------------------------------------------|--------------------------------------------------------------------|-------------------------------------------------------------------------------|
| Torre inferior Lower tower | TSRI-20-5,6 TRID24-5,6 |  | 19.7 19.7 | 7.4 10.5 | 7.4 10.5 | 15120 18520 |
| Torre Tower | TSR20 TSR20-5,6 TR24-5,6,6 |  | 14.0 19.7 19.7 | 7.4 7.4 9.1 | 7.4 7.4 9.3 | 6860 9280 10490 |
| Torre desmontada Dismantled tower | TRD24-5,6 |  | 19.7 | 3.8 | 8.3 | 11640 |
| Larguero largo, reducción Long crossbar, reduction | TR24/TSR20 |  | 15,9 | 2,1 | 5,5 | 6280 |
| Larguero corto reducción Short crossbar, reduction | TR24/TSR20 |  | 7,8 | 1,9 | 5,5 | 3190 |
| Torre asiento pista, torre superior y orientación Slewing table, top tower and slewing mechanism | |  | 29.2 | 7.6 | 8.1 | 37260 |
| Punta de torre Tower head | |  | 16.8 | 8.0 | 7.0 | 10910 |
| Torre asiento pista + base punta de torre + orientación Slewing table + tower head base + slewing mechanism | |  | 15.3 | 7.6 | 8.1 | 26345 |
| Tramo de pluma Jib section | PC19-1 PC19-2+tr PC19-33 PC19-34 PT19-35 PT19-36 PT19-37 PT19-8 PT19-39 PP19 |  | 33.7 33.8 33.7 33.7 33.8 33.8 33.7 33.7 17.0 4.3 | 6.1 5.2 5.2 5.2 5.2 5.2 5.2 5.2 5.2 6.1 | 7.3 7.9 7.1 7.1 7.2 7.2 7.1 7.1 7.1 2.1 | 9290 11870 10870 9090 6050 4600 3770 3000 1700 710 |
| Polipasto Hook assembly | ST/DR |  | 5.7 | 2.1 | 4.4 | 2290 |
| Carro Trolley | ST/DR |  | 8.5 | 7.6 | 7.0 | 2550 |
| Tirante sostén pluma Jib support tie | |  | 30.9 | 3.6 | 2.2 | 7110 |
| Contrapluma 1 Counterjib 1 | |  | 37.5 | 6.7 | 8.2 | 20190 |
| Contrapluma 2 Counterjib 2 | |  | 14.9 | 6.7 | 6.8 | 4940 |

LISTA DE EMBARQUE / PACKING LIST

J560

| | | L [ft] | A [ft] | H [ft] | P / W [lb] |
|-------------------------------------------------------------------------------------------------------------------------------------------|-------------------------------------|----------------------|-------------------|-------------------|-----------------------|
| Contrapluma 3 con mecanismos (sin cable) y plumin auxiliar Counterjib 3 with mechanism (without rope), and auxiliary jib | | 21.0 | 7.5 | 8.1 | 21210 |
| Plataforma y cabina Platform and cabin | | 12.0 | 7.5 | 8.1 | 2760 |
| Transporte torre de montaje Jacking cage transport | TM20PASR-5,6 | 35.5 | 7.5 | 7.9 | 26760 |
| Contrapeso Counterweight | Lastre Ballast | 12.5 12.5 12.5 | 1.9 0.9 0.6 | 4.9 4.9 4.9 | 13230 6610 4410 |

LASTRES INFERIORES / LOWER BALLASTS

J560

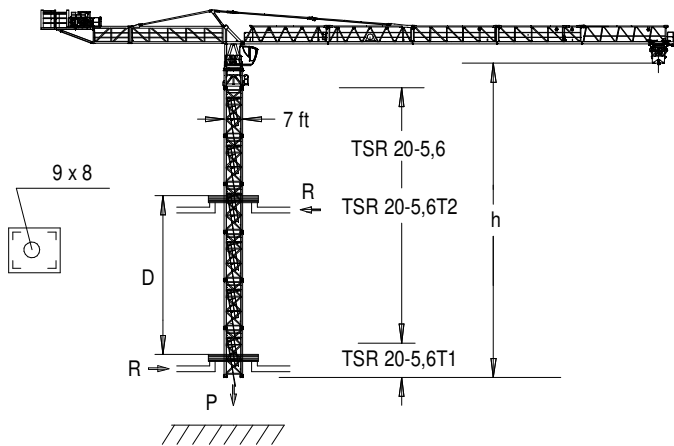
| | | | | |
|----------------------|--------|------------|------------|------------|
| BRI 10-24 | H (ft) | 262 | 280 | 297 |
| | P (lb) | 158700 | 185200 | 211600 |
| BSRI 8-20-5,6 | H (ft) | 184 | 203 | 237 |
| | P (lb) | 211600 | 238100 | 264600 |

H: Altura bajo gancho / Height under hook

Para alturas intermedias tomar el lastre correspondiente a la altura superior / For intermediate heights take the ballast corresponding to the higher height

TREPADO / CLIMBING

J560



| | h _{max} : TSR20-5,6T1 + 8 x TSR20-5,6 + TSR20-5,6T2 | |
|------------------------|-----------------------------------------------------------------|--------|
| | ▶ | ■ |
| h (ft) | 197 | |
| D (ft) | 47 – 93 | |
| P (lbf) | 441700 | 387800 |
| R _{max} (lbf) | 88800 | 174200 |

TSR20-5,6T1: 206.31.400

TSR20-5,6T2: 206.31.500

Trepado interno / Internal climbing

Viento fuera de servicio / Out of service wind

Consultar / Consult

▶ En servicio / In service

■ Fuera de servicio / Out of service

* Opcional / Optional



Ctra./ Rd. Madrid – Irún - Km. 415 - 20213 IDIAZABAL (Gipuzkoa) - ESPAÑA / SPAIN

P.O. Box, 23 - 20.200 - BEASAIN - E-mail: jaso@jaso.com

Tel. +34 943 - 18 70 00 • Fax. +34 943 - 18 70 20

www.jaso.com

31/03/2025

FEM 1001

DELEGACIÓN / DEALER