

*OPTIONAL EXTRA LIFT

H= Altura máxima bajo gancho sin arriostrar (m) / Maximum height under hook without fastening (m).

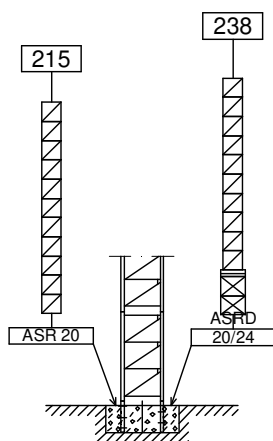
PC19-1.....163.40.000	PT19-35.....163.44.500	PT19-39.....163.48.200	TR24/TSR20.....204.36.500
PC19-2.....163.41.000	PT19-36.....163.45.500	PP19.....163.48.500	TR24-5,6.....206.32.000
PC19-33.....163.42.500	PT19-37.....163.46.500	TSR20.....206.31.200	TRD24-5,6.....206.32.300
PC19-34.....163.43.500	PT19-8.....163.47.000	TSR20-5,6.....206.31.000	

CUSTOMIZE YOUR CRANE

EXTRA Lift	OPTI Cube	TC Diagnosis SYSTEM	CLIMBING Solution	SAFETY Pack	Customization	ECO Mode	COMFORT Cabin	HIGH POWER Motors	JL25 Tower Crane Elevator	SMARTLINK BE SMART keep control

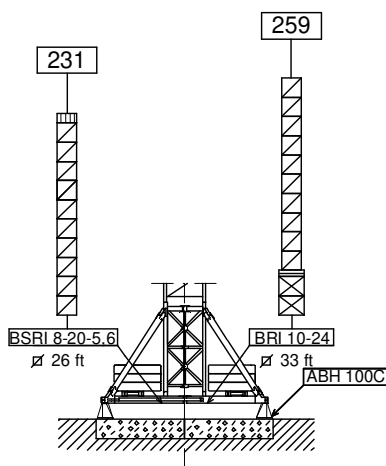
OPTIMUS
line JASD

(H) ESTACIONARIA 1 / STATIONARY 1



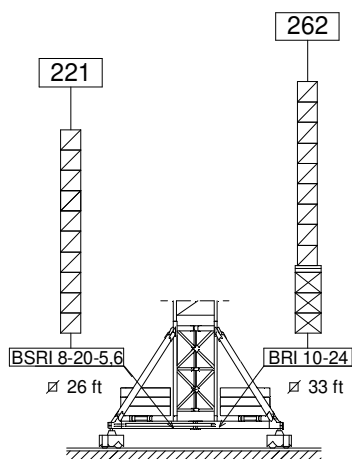
- TSR20
- TSR20-5,6
- TR24/TSR20
- TR24-5,6
- TRD24-5,6

(H) ESTACIONARIA 3 / STATIONARY 3



- TSR20
- TSR20-5,6
- TR24/TSR20
- TR24-5,6
- TRD24-5,6

(H) TRASLACIÓN / TRAVELLING



- TSR20
- TSR20-5,6
- TR24/TSR20
- TR24-5,6
- TRD24-5,6

ASR20 160.21.200
 ASRD 20/24 156.21.000


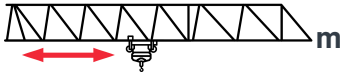

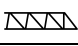
BSRI 8-20-5,6 204.20.000
 BRI 10-24 156.20.500

ABH 100C 170.23.000




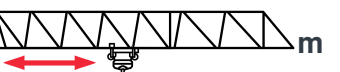


CARGAS / LOADS

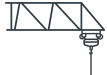
J560

 ST-SR 26500 lb															 EXTRA Lift
	26500 lb @ ... (ft)	82	98	115	131	148	164	180	197	213	230	246	262	279	
279	91	26500	24000	19900	16800	14500	12600	11000	9700	8600	7700	6900	6100	5500	
	97	26500	25900	21500	18200	15700	13600	12000	10600	9400	8400	7500	6700	6100	+
262	104	26500	26500	23500	20000	17300	15100	13300	11800	10500	9500	8500	7700	—	
	111	26500	26500	25400	21600	18700	16300	14400	12800	11500	10300	9300	8400	—	+
246	115	26500	26500	26500	22600	19600	17200	15200	13500	12100	11000	9900	—	—	
	123	26500	26500	26500	24400	21200	18600	16400	14700	13200	11900	10800	—	—	+
230	124	26500	26500	26500	24600	21400	18800	16700	14900	13400	12100	—	—	—	
	132	26500	26500	26500	26500	23100	20300	18100	16200	14600	13200	—	—	—	+
213	145	26500	26500	26500	26500	25900	22900	20400	18300	16500	—	—	—	—	
	155	26500	26500	26500	26500	26500	24700	22000	19800	17900	—	—	—	—	+
197	148	26500	26500	26500	26500	26500	23400	20900	18700	—	—	—	—	—	
	158	26500	26500	26500	26500	26500	25300	22600	20300	—	—	—	—	—	+
180	161	26500	26500	26500	26500	26500	25900	23100	—	—	—	—	—	—	
	172	26500	26500	26500	26500	26500	26500	24900	—	—	—	—	—	—	+
164	164	26500	26500	26500	26500	26500	26500	—	—	—	—	—	—	—	
	164	26500	26500	26500	26500	26500	26500	—	—	—	—	—	—	—	+
148	148	26500	26500	26500	26500	26500	—	—	—	—	—	—	—	—	
	148	26500	26500	26500	26500	26500	—	—	—	—	—	—	—	—	+
131	131	26500	26500	26500	26500	—	—	—	—	—	—	—	—	—	
	131	26500	26500	26500	26500	—	—	—	—	—	—	—	—	—	+
115	115	26500	26500	26500	—	—	—	—	—	—	—	—	—	—	
	115	26500	26500	26500	—	—	—	—	—	—	—	—	—	—	+
98	98	26500	26500	—	—	—	—	—	—	—	—	—	—	—	
	98	26500	26500	—	—	—	—	—	—	—	—	—	—	—	+

CARGAS / LOADS

J560

 ST-DR 52900 lb															 EXTRA Lift	
	52900 lb @ ... (ft)	66	82	98	115	131	148	164	180	197	213	230	246	262	279	
279	49	37500	28900	23100	19000	15900	13500	11600	10000	8700	7500	6600	5800	5000	4400	
	50	39000	30100	24200	19900	16700	14200	12300	10600	9300	8100	7200	6300	5600	4900	+
262	55	43800	33900	27300	22600	19000	16200	14000	12300	10700	9500	8400	7400	6600	—	
	57	45500	35300	28500	23700	20000	17200	14900	13100	11500	10200	9100	8100	7300	—	+
246	61	49000	38000	30700	25500	21600	18600	16100	14100	12500	11100	9900	8800	—	—	
	63	50800	39600	32100	26700	22700	19600	17100	15100	13400	11900	10700	9600	—	—	+
230	66	52900	41300	33400	27800	23600	20300	17700	15600	13800	12300	11000	—	—	—	
	68	52900	43000	34900	29200	24900	21500	18850	16700	14800	13300	12000	—	—	—	+
213	77	52900	49400	40200	33600	28700	24900	21800	19300	17200	15400	—	—	—	—	
	80	52900	51300	41900	35200	30200	26300	23100	20600	18500	16700	—	—	—	—	+
197	78	52900	50400	41000	34400	29300	25400	22300	19800	17600	—	—	—	—	—	
	81	52900	52300	42800	36000	30900	27000	23800	21200	19000	—	—	—	—	—	+
180	86	52900	52900	45200	37900	32500	28200	24800	22000	—	—	—	—	—	—	
	89	52900	52900	47100	39800	34300	30000	26500	23700	—	—	—	—	—	—	+
164	87	52900	52900	46100	38700	33100	28800	25400	—	—	—	—	—	—	—	
	90	52900	52900	48000	40600	35100	30700	27300	—	—	—	—	—	—	—	+
148	88	52900	52900	46500	39100	33500	29100	—	—	—	—	—	—	—	—	
	91	52900	52900	48500	41000	35450	31100	—	—	—	—	—	—	—	—	+
131	89	52900	52900	47500	39900	34200	—	—	—	—	—	—	—	—	—	
	93	52900	52900	49400	41700	36000	—	—	—	—	—	—	—	—	—	+
115	89	52900	52900	47500	39900	—	—	—	—	—	—	—	—	—	—	
	93	52900	52900	49400	41500	—	—	—	—	—	—	—	—	—	—	+
98	90	52900	52900	47600	—	—	—	—	—	—	—	—	—	—	—	
	93	52900	52900	49300	—	—	—	—	—	—	—	—	—	—	—	+

Datos válidos para / Valid data for  H ≤ 213 ft

 **FEM 1005 - C25**



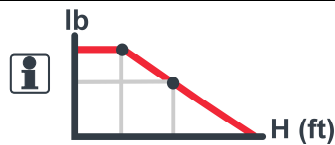
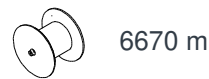
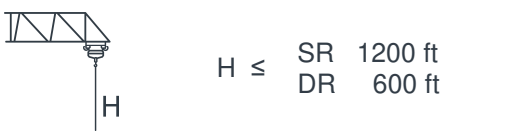
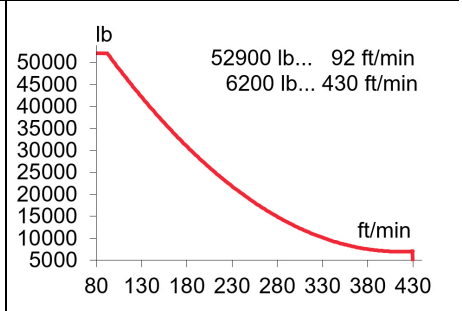
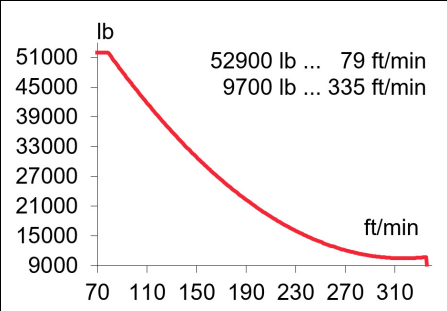
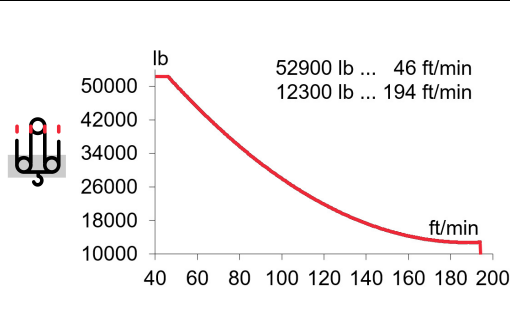
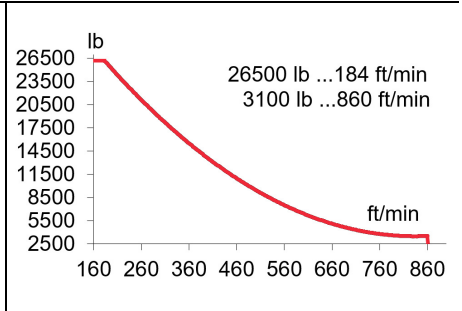
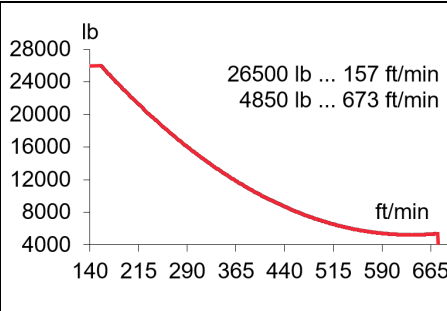
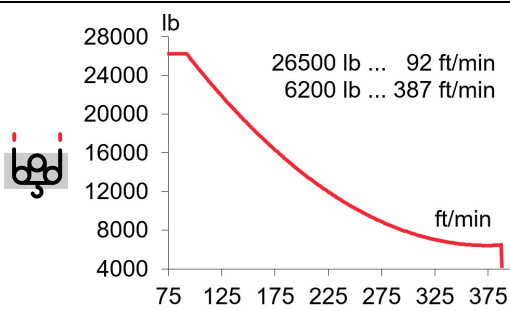
Reservado el derecho a modificaciones sin previo aviso. Declinamos toda responsabilidad derivada de la información proporcionada. Subject to modification, without prior notice. This information is supplied without liability



EC88115VF
65 kW

***EC150205VF**
110 kW

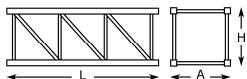

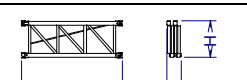
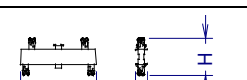
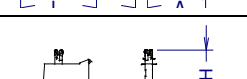
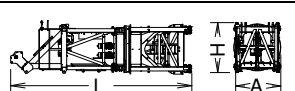
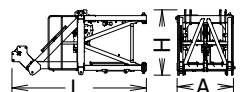
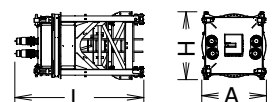
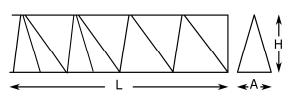
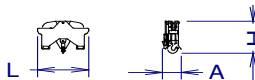
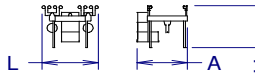
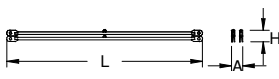
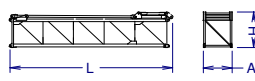
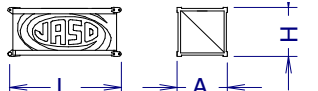
***EC180262VF**
132 kW



<p>OG4006VF 4 x 7,5 kW</p>	<p>TC15105VF 11 kW</p>	<p>TG4025VF 4 x 7,5 kW</p>	<p>TH4010 29,4 kW</p>
0...0,8 r/min sl/min	26500 lb 0...344 ft/min 52900 lb 0...171 ft/min	0...82 ft/min	2 ft/min

3~ 400V 50Hz
480V 60Hz

KVA			
EC88115VF	78	94	109
EC150205VF	100	126	153
EC180262VF	111	143	174

			L [ft]	A [ft]	H [ft]	P / W [lb]
Torre inferior Lower tower	TSRI-20-5,6 TRID24-5,6		19.7 19.7	7.4 10.5	7.4 10.5	15120 18520
Torre Tower	TSR20 TSR20-5,6 TR24-5,6,6		14.0 19.7 19.7	7.4 7.4 9.1	7.4 7.4 9.3	6860 9280 10490
Torre desmontada Dismantled tower	TRD24-5,6		19.7	3.8	8.3	11640
Larguero largo, reducción Long crossbar, reduction	TR24/TSR20		15,9	2,1	5,5	6280
Larguero corto reducción Short crossbar, reduction	TR24/TSR20		7,8	1,9	5,5	3190
Torre asiento pista, torre superior y orientación Slewing table, top tower and slewing mechanism			29.2	7.6	8.1	37260
Punta de torre Tower head			16.8	8.0	7.0	10910
Torre asiento pista + base punta de torre + orientación Slewing table + tower head base + slewing mechanism			15.3	7.6	8.1	26345
Tramo de pluma Jib section	PC19-1 PC19-2+tr PC19-33 PC19-34 PT19-35 PT19-36 PT19-37 PT19-8 PT19-39 PP19		33.7 33.8 33.7 33.7 33.8 33.8 33.7 33.7 17.0 4.3	6.1 5.2 5.2 5.2 5.2 5.2 5.2 5.2 5.2 6.1	7.3 7.9 7.1 7.1 7.2 7.2 7.1 7.1 7.1 2.1	9290 11870 10870 9090 6050 4600 3770 3000 1700 710
Polipasto Hook assembly	ST/DR		5.7	2.1	4.4	2290
Carro Trolley	ST/DR		8.5	7.6	7.0	2550
Tirante sostén pluma Jib support tie			30.9	3.6	2.2	7110
Contrapluma 1 Counterjib 1			37.5	6.7	8.2	20190
Contrapluma 2 Counterjib 2			14.9	6.7	6.8	4940



LISTA DE EMBARQUE / PACKING LIST

J560

		L [ft]	A [ft]	H [ft]	P / W [lb]
Contrapluma 3 con mecanismos (sin cable) y plumin auxiliar Counterjib 3 with mechanism (without rope), and auxiliary jib		21.0	7.5	8.1	21210
Plataforma y cabina Platform and cabin		12.0	7.5	8.1	2760
Transporte torre de montaje Jacking cage transport	TM20PASR-5,6 	35.5	7.5	7.9	26760
Contrapeso Counterweight	Lastre Ballast	12.5 12.5 12.5	1.9 0.9 0.6	4.9 4.9 4.9	13230 6610 4410

LASTRES INFERIORES / LOWER BALLASTS

J560

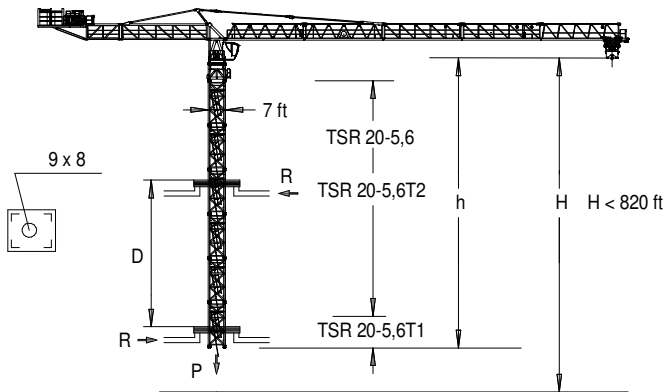
BRI 10-24	H (ft)	243	262
	P (lb)	132300	158700
BSRI 8-20-5,6	H (ft)	184	202
	P (lb)	211600	238100
			264600

H: Altura bajo gancho / Height under hook

Para alturas intermedias tomar el lastre correspondiente a la altura superior / For intermediate heights take the ballast corresponding to the higher height

TREPADO / CLIMBING

J560



	h _{max} : TSR20-5,6T1 + 8 x TSR20-5,6 + TSR20-5,6T2	
	▶	■
h (ft)	197	
D (ft)	62 - 93	
P (lbf)	441700	387800
R _{max} (lbf)	67400	159600

TSR20-5,6T1: 206.31.400

TSR20-5,6T2: 206.31.500

Trepado interno / Internal climbing

Viento fuera de servicio / Out of service wind

Consultar / Consult

En servicio / In service

Fuera de servicio / Out of service

* Opcional / Optional



Ctra./ Rd. Madrid - Irún - Km. 415 - 20213 IDIAZABAL (Gipuzkoa) - ESPAÑA / SPAIN

P.O. Box, 23 - 20.200 - BEASAIN - E-mail: jaso@jaso.com

Tel. +34 943 - 18 70 00 • Fax. +34 943 - 18 70 20

www.jaso.com

31/03/2025

FEM 1005 - C25

DELEGACIÓN / DEALER

Reservado el derecho a modificaciones sin previo aviso. Declinamos toda responsabilidad derivada de la información proporcionada / Subject to modification, without prior notice. This information is supplied without liability