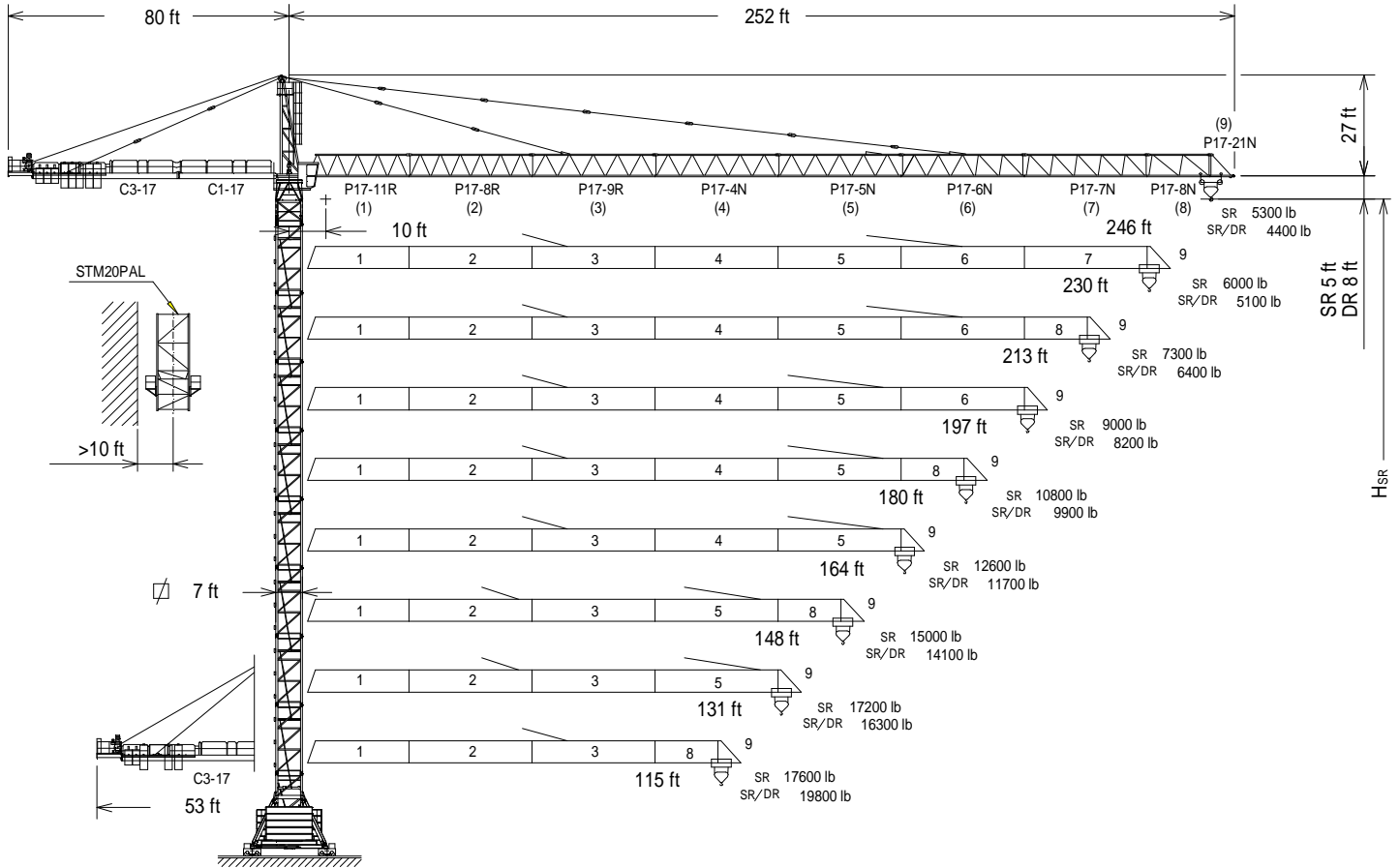




UNE 58-101
FEM 1001

UNE-EN-ISO 9001

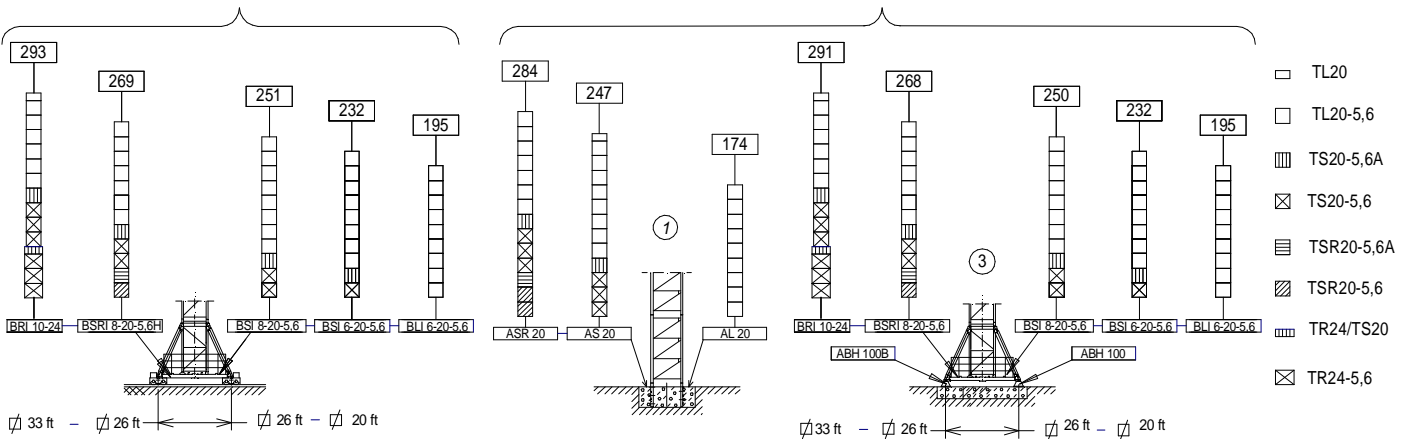


$$H_{DR} = H_{SR} - 3 \text{ ft}$$

H_{SR} = Altura máxima bajo gancho sin arriostrar (ft).
Maximum height under hook without fastening (ft).

(H) TRASLACIÓN / TRAVELLING

(H) ESTACIONARIA / STATIONARY



Fecha / Date: 16/01/2023



CARGAS / LOADS

J300N.16.A

SR (lb)		Cargas máximas / Maximum loads SR - 17600 lb										
[ft]	17600 lb @ ... (ft)	Alcance del gancho [ft] / Hook reach [ft]										
		82	98	115	131	148	164	180	197	213	230	246
246	91	17600	16100	13500	11600	10100	8900	7900	7100	6400	5800	5300
230	92	17600	16400	13800	11800	10300	9100	8100	7300	6600	5950	—
213	100	17600	17600	15100	13000	11400	10000	8950	8000	7300	—	—
197	110	17600	17600	16900	14500	12700	11200	10000	9000	—	—	—
180	117	17600	17600	17600	15600	13600	12100	10800	—	—	—	—
164	121	17600	17600	17600	16200	14200	12600	—	—	—	—	—
148	128	17600	17600	17600	17100	15000	—	—	—	—	—	—
131	128	17600	17600	17600	17200	—	—	—	—	—	—	—
115	115	17600	17600	17600	—	—	—	—	—	—	—	—

SR / DR (lb)		Cargas máximas / Maximum loads SR / DR 17600 / 35300 lb													
[ft]	17600 / 35300 lb @ ... (ft)	Alcance del gancho [ft] / Hook reach [ft]													
		33	49	66	82	98	115	131	148	164	180	197	213	230	246
246	90	17600	17600	17600	17600	15800	13100	11050	9500	8200	7200	6300	5600	5000	4400
	49	35300	34800	25300	19600										
230	91	17600	17600	17600	17600	16100	13300	11300	9700	8400	7300	6500	5700	5100	—
	49	35300	35300	25700	19900										
213	98	17600	17600	17600	17600	17600	14600	12400	10600	9300	8100	7200	6400	—	—
	53	35300	35300	27900	21700										
197	107	17600	17600	17600	17600	17600	16300	13800	11900	10400	9200	8200	—	—	—
	58	35300	35300	30800	24000										
180	114	17600	17600	17600	17600	17600	17400	14800	12800	11200	9900	—	—	—	—
	61	35300	35300	32800	25600										
164	117	17600	17600	17600	17600	17600	17600	15400	13300	11700	—	—	—	—	—
	63	35300	35300	34000	26600										
148	123	17600	17600	17600	17600	17600	17600	16300	14100	—	—	—	—	—	—
	66	35300	35300	35300	27900										
131	123	17600	17600	17600	17600	17600	17600	16300	—	—	—	—	—	—	—
	67	35300	35300	35300	28000										
115	127	17600	17600	17600	17600	17600	17600	—	—	—	—	—	—	—	—
	69	35300	35300	35300	29100										

CARACTERISTICAS DE MECANISMOS / MECHANISMS FEATURES الخصائص الآلية J300N.16.A

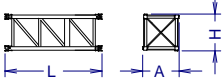
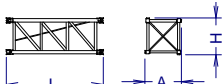
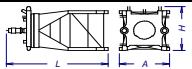
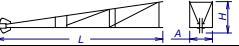
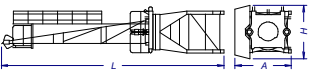

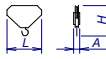
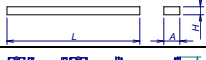

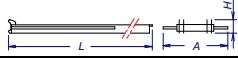
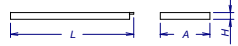
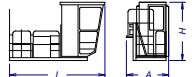
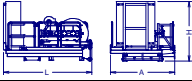
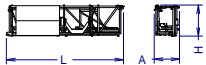
*opcional *optional						
	EC10085VF 73,5 kW	* EC150125VF 110 kW	TG4025VF 4x7,5 kW	OG2207VF 3x5,5 kW	TC770VF 5,5 kW	TH2006 15 kW
	8800 17600 0...279 0..138 	8800 17600 0..410 0...203 	0...82 ft/min	0...0,8 r/min sl/min	8800 lb 0...295 ft/min 17600 lb 0...230 ft/min 35300 lb 0...115 ft/min	2 ft/min
	17600 35300 0...138 0...69 	17600 35300 0...203 0...102 	400V 50Hz			
	H ≤ SR 1195 ft DR 597 ft	SR 1732 ft DR 866 ft				
	3304 ft	4213 ft				



Fecha / Date: 16/01/2023

FEM 1001

Reservado el derecho a modificaciones sin previo aviso. Declinamos toda responsabilidad derivada de la información proporcionada / Subject to modification, without prior notice. This information is supplied without liability

LISTA DE EMBARQUE / PACKING LIST			J300N.16.A			
DENOMINACIÓN / DENOMINATION			L [ft]	A [ft]	H [ft]	P / W [lb]
Torre inferior Lower tower	TLI20-5,6		19.3	7.6	7.7	9335
	TSI20-5,6		19.6	7.6	7.8	11880
	TSRI20-5,6		19.7	7.4	7.4	14470
	TRID24-5,6		19.7	10.5	10.5	18520
Torre Tower	TL20		13.7	7.2	7.5	4620
	TL20-5,6		19.3	7.6	7.7	6415
	TS20-5,6A		19.6	7.6	7.8	7780
	TS20-5,6		19.7	7.4	7.4	7825
	TSR20-5,6A		19.4	7.8	7.6	9190
	TSR20-5,6		19.6	7.8	7.6	9280
	TR24-5,6		19.7	9.1	9.3	10495
TRD24-5,6	19.6	9.0	7.5	11640		
Torre asiento pista + base punta de torre + orientación Slewing table + tower head base + slewing mechanism			16.7	8.3	7.4	16290
Punta de torre Tower head			26.9	4.6	6.0	6220
Conjunto asiento pista, punta de torre, orientación Slewing table assembl +, tower head + slewing			39.9	10.0	8.1	23700
Tramo de pluma Jib section	P17-11R (1)		28.9	5.2	6.2	3970
	P17-8R (2)		33.3	5.2	6.7	4675
	P17-9R (3)		33.4	5.2	6.7	4455
	P17-4N (4)		33.4	5.2	6.2	3745
	P17-5N (5)		33.4	5.2	6.5	3390
	P17-6N (6)		33.4	5.2	6.5	3320
	P17-7N (7)		33.4	5.2	6.2	2760
	P17-8N (8)		17.4	5.2	6.2	1650
	P17-21N (9)		7.0	5.7	7.3	830
Polipasto Hook assembly	SR		3.5	1.0	3.1	705
	DR		3.9	1.3	5.3	1285
Tirante sostén pluma Jib support tie	Largo / Long		16.3	1.3	2.4	3540
	Corto / Short		19.8	0.7	2.3	1920
Carro Trolley	SR		5.8	7.67	5.6	1190
	DR		7.2	6	5.7	1900
Contrapluma con plataformas Counterjib with platforms			39.7	9.1	2.0	6800
Prolongación contrapluma con plataforma Counterjib extension with platform			27.2	6.3	1.9	4240
Plataforma y cabina Platform and cabin			12.3	6.7	7.9	2820
Soporte y elevación (sin cable) Support and hoisting (without rope)	EC 10085 VF		10.5	7.5	7.2	8600
	EC 150125 VF		10.5	7.5	7.2	8600
Transporte torre de montaje Jacking cage transport			31.3	6.8	8.3	12540

LASTRES INFERIORES / LOWER BALLASTS			J300N.16.A			
BRI 10-24	H (ft)	220	257	293		
	P (lb)	132300	158700	211600		
BSRI 8-20-5,6	H (ft)	190	214	269		
	P (lb)	132300	158700	264600		
BSI 8-20-5,6	H (ft)	190	214	251		
	P (lb)	132300	158700	211600		
BSI 6-20-5,6	H (ft)	104	140	196	232	
	P (lb)	132300	158700	211600	264600	
BLI 6-20-5,6	H (ft)	103	140	195		
	P (lb)	132300	158700	211600		

H: Altura bajo gancho / Height under hook

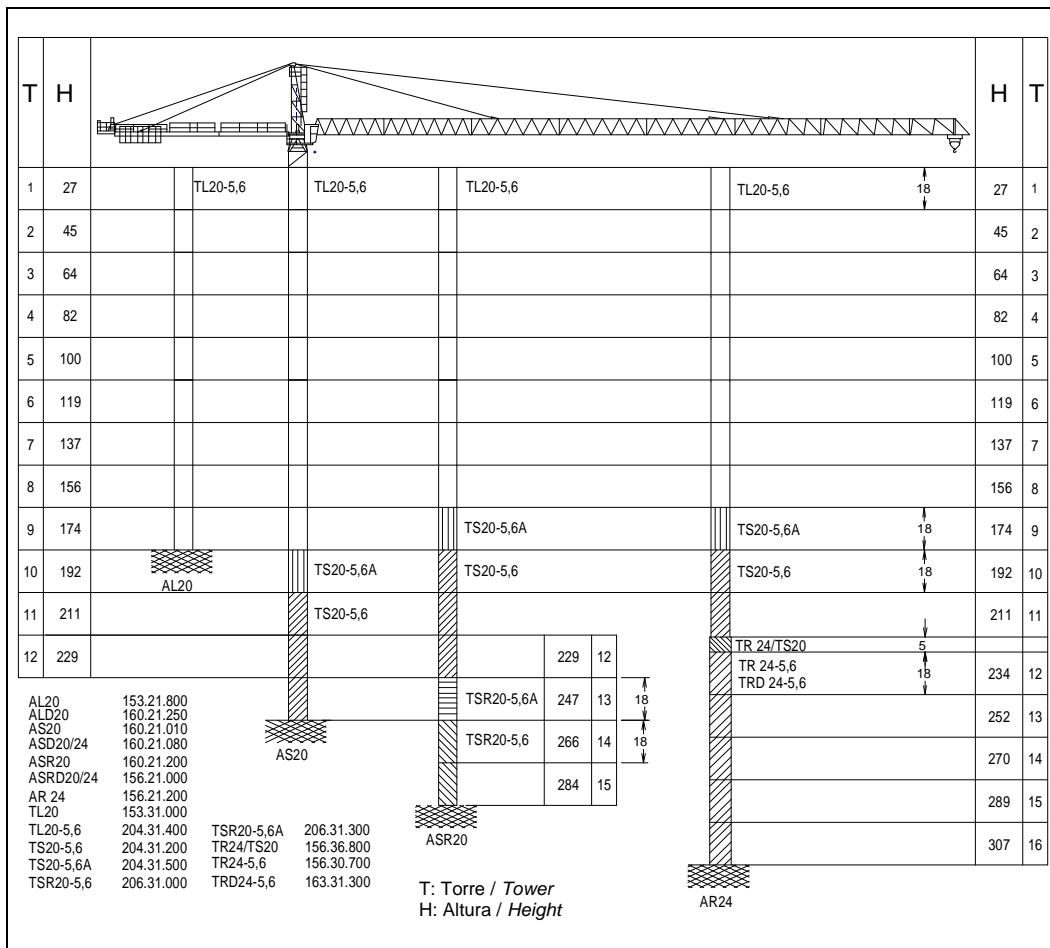
Para alturas intermedias tomar el lastre correspondiente a la altura superior / For intermediate heights take the ballast corresponding to the higher height



Fecha / Date: 16/01/2023

FEM 1001

Reservado el derecho a modificaciones sin previo aviso. Declinamos toda responsabilidad derivada de la información proporcionada / Subject to modification, without prior notice. This information is supplied without liability



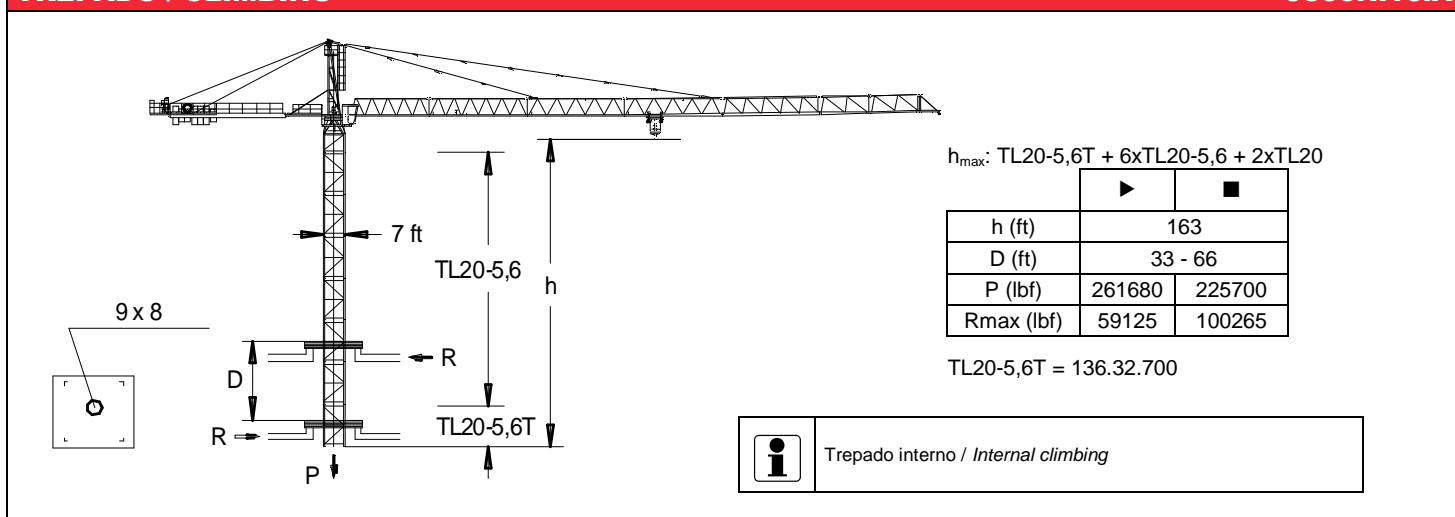
Transporte / Transport

H= 195 ft + + BLI 6-20-5,6

11x

11x **HIGH CUBE 40'**

i Otras configuraciones de torre / Other tower configuration



- Viento fuera de servicio / Out of service wind
- i** Consultar / Consult
- ▶ En servicio / In service
- Fuera de servicio / Out of service



Ctra./Rd. Madrid - Irún Km. 415 - 20.213 IDIAZABAL [Gipuzkoa] ESPAÑA / SPAIN
 P.O. Box, 23 - 20.200 BEASAIN - E-mail: jaso@jaso.com
 Tel. +34 943 - 18 70 00 • Fax. +34 943 - 18 70 20
www.jaso.com

Fecha / Date: 16/01/2023

FEM 1001

DELEGACION / DEALER