



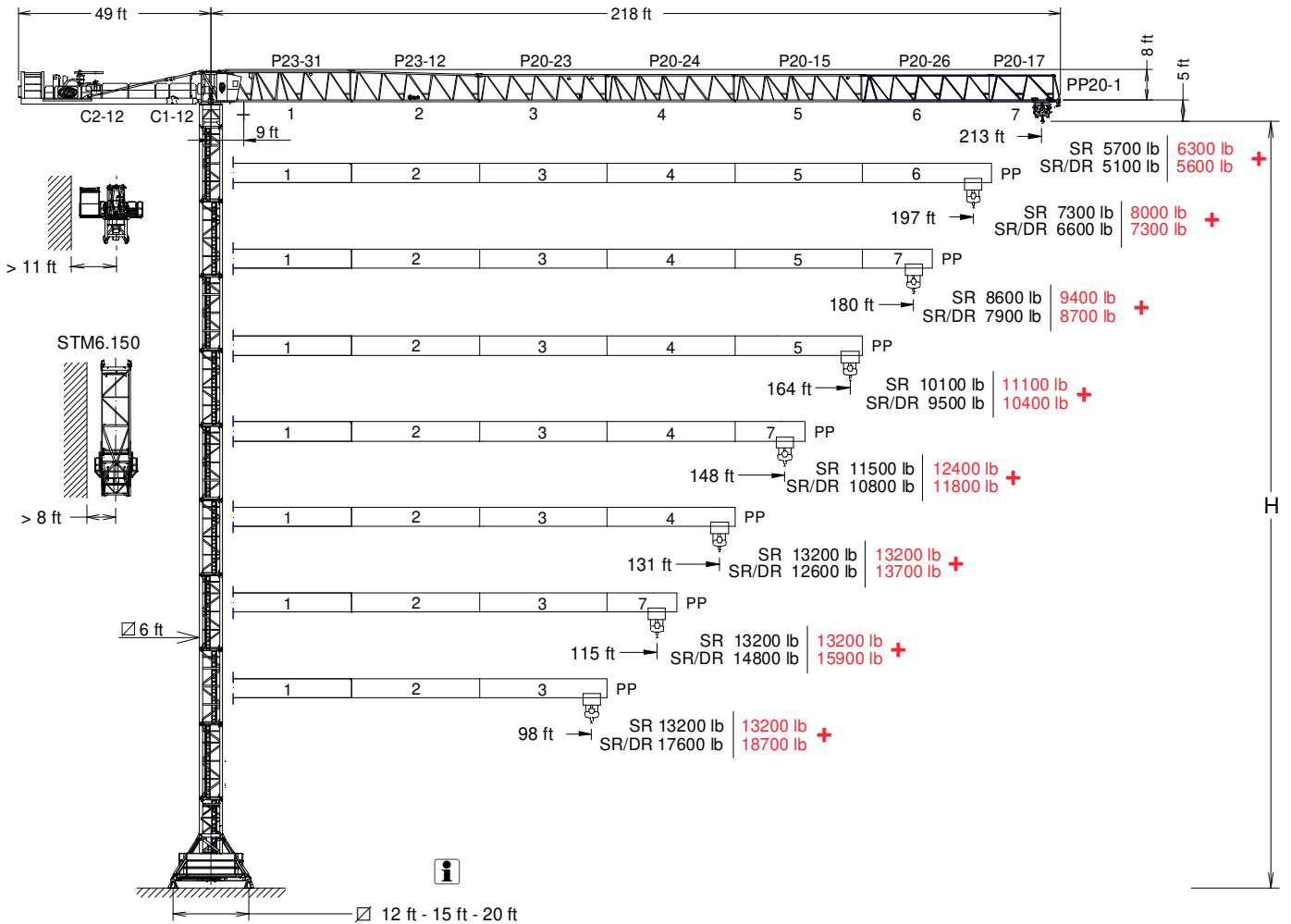
# J235.12

EN 14439  
C25

GRUA TORRE / TOWER CRANE

FEM 1005 - C25

UNE-EN-ISO 9001



\*OPTIONAL EXTRA LIFT

C2-12	171.50.200
C1-12	171.50.050
P23-31	171.40.700
P23-12	171.41.000

P20-23	171.42.300
P20-24	171.43.200
P20-15	171.44.000
P20-26	171.45.200

P20-17	171.46.000
PP20-1	171.47.000
T3-150	161.32.000

T6-150	161.31.000
TD6-150	161.31.700
T12-150	161.31.500

## CUSTOMIZE YOUR CRANE

## OPTIMUS line

EXTRA Lift	OPTI Cube	TC Diagnosis SYSTEM	CLIMBING Solution	SAFETY Pack	Customization	ECO Mode	COMFORT Cabin	HIGH POWER Motors	JL25 Tower Crane Elevator	SMARTLINK BE SMART keep control



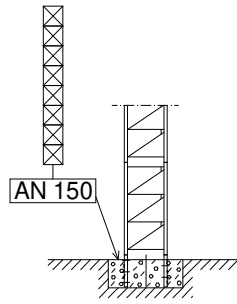
Reservado el derecho a modificaciones sin previo aviso. Declinamos toda responsabilidad derivada de la información proporcionada / Subject to modification, without prior notice. This information is supplied without liability

11/04/2025

SR

(HSR) ESTACIONARIA 1 / STATIONARY 1

▽▽	H(ft)	☒	☐
213 - 98	155	8	-



(HSR) ESTACIONARIA 3 / STATIONARY 3

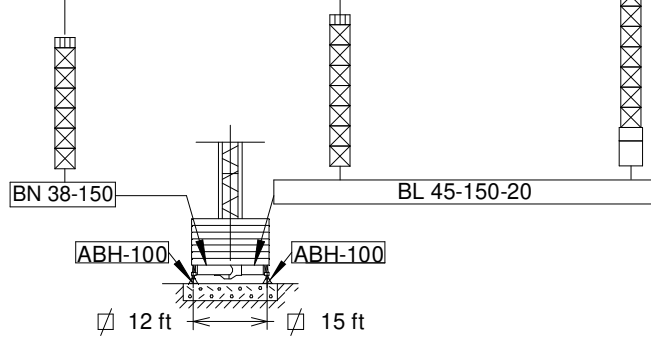
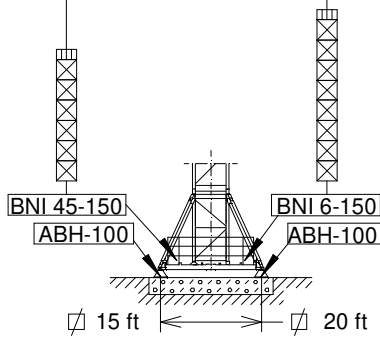
▽▽	H(ft)	☒	☐
213 - 197	139	6	-
180 - 98	129	5	1

▽▽	H(ft)	☒	☐
213 - 98	167	7	1

▽▽	H(ft)	☒	☐
213 - 197	131	6	1
180 - 131	112	5	1
115 - 98	121	6	-

▽▽	H(ft)	☒	☐
213 - 98	150	7	1

▽▽	H(ft)	☐	☐	☒	☐
213 - 98	181	1	1	7	1



(HSR) TRASLACION / TRAVELLING

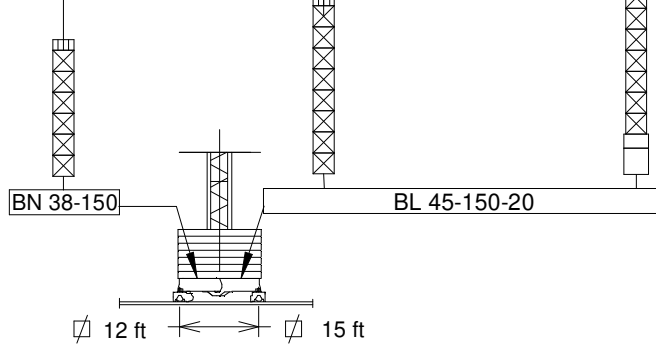
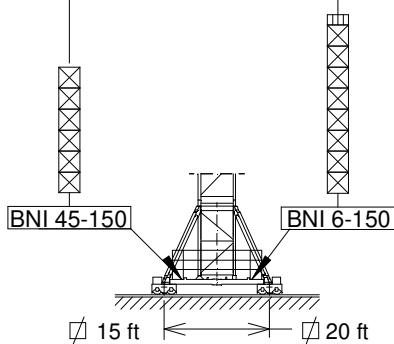
▽▽	H(ft)	☒	☐
213 - 197	139	6	-
180 - 98	130	5	1

▽▽	H(ft)	☒	☐
213 - 98	168	7	1

▽▽	H(ft)	☒	☐
213 - 197	131	6	1
180 - 131	112	5	1
115 - 98	122	6	-

▽▽	H(ft)	☒	☐
213 - 98	151	7	1

▽▽	H(ft)	☐	☐	☒	☐
65 - 30	182	1	1	7	1



☐ T3-150

☒ T6-150  
TD6-150

☒ T12-150

☐ TL20/T6-150

☐ TL20-5,6

$H_{SR/DR} = H_{SR} - 2 \text{ ft}$

$H_{SR}$  = Altura máxima bajo gancho sin arriostar (ft) / Maximum height under hook without fastening (ft)


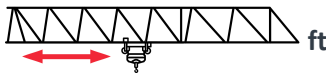

BNI 45-150..... 161.20.500  
BNI 6-150 ..... 161.20.000

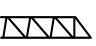
BN 38-150 ..... 161.20.800  
BL 45-150-20 ..... 171.20.200

AN 150 ..... 161.21.000  
ABH 100 ..... 201.23.000

**CARGAS / LOADS**




**J235.12**






SR - 13200 lb												
	13200 lb @ ...(ft)	82	98	115	131	148	164	180	197	213	EXTRA Lift	
213	103	13200	13200	11700	10100	8800	7800	7000	6300	5700		
	111	13200	13200	12700	11000	9600	8500	7650	6900	6300	+	
197	116	13200	13200	13200	11500	10100	9000	8000	7300	—		
	125	13200	13200	13200	12500	11000	9800	8800	8000	—	+	
180	123	13200	13200	13200	12300	10800	9600	8600	—	—		
	132	13200	13200	13200	13200	11700	10400	9400	—	—	+	
164	129	13200	13200	13200	13000	11400	10100	—	—	—		
	139	13200	13200	13200	13200	12400	11100	—	—	—	+	
148	130	13200	13200	13200	13100	11500	—	—	—	—		
	140	13200	13200	13200	13200	12400	—	—	—	—	+	
131	131	13200	13200	13200	13200	—	—	—	—	—		
	131	13200	13200	13200	13200	—	—	—	—	—	+	
115	115	13200	13200	13200	—	—	—	—	—	—		
	115	13200	13200	13200	—	—	—	—	—	—	+	
98	98	13200	13200	—	—	—	—	—	—	—		
	98	13200	13200	—	—	—	—	—	—	—	+	

**CARGAS / LOADS**

**J235.12**

SR / DR 13200 / 26500 lb														
	13200 lb / 26500 lb @ ...(ft)	49	66	82	98	115	131	148	164	180	197	213	EXTRA Lift	
213	97 - 52	13200 / 26500	13200 / 20400	13200 / 16000	13000	10900	9300	8100	7100	6300	5600	5100		
	102 - 54	13200 / 26500	13200 / 21400	13200 / 16900	13200 / 13800	11600	10000	8700	7700	6900	6200	5600	+	
197	110 - 58	13200 / 26500	13200 / 23300	13200 / 18300	13200 / 15000	12600	10800	9400	8300	7400	6600	—		
	116 - 61	13200 / 26500	13200 / 24400	13200 / 19200	13200 / 15800	13200 / 13400	11600	10100	9000	8000	7300	—	+	
180	117 - 62	13200 / 26500	13200 / 24900	13200 / 19600	13200 / 16000	13200 / 13500	11600	10100	8900	7900	—	—		
	124 - 65	13200 / 26500	13200 / 26000	13200 / 20600	13200 / 17000	13200 / 14400	12400	10900	9700	8700	—	—	+	
164	123 - 65	13200 / 26500	13200 / 26300	13200 / 20700	13200 / 17000	13200 / 14300	12300	10700	9500	—	—	—		
	132 - 68	13200 / 26500	13200 / 26500	13200 / 21800	13200 / 18000	13200 / 15300	13200 / 13250	11700	10400	—	—	—	+	
148	124 - 66	13200 / 26500	13200 / 26500	13200 / 20800	13200 / 17100	13200 / 14400	12400	10800	—	—	—	—		
	133 - 69	13200 / 26500	13200 / 26500	13200 / 22000	13200 / 18200	13200 / 15500	13200 / 13400	11800	—	—	—	—	+	
131	125 - 67	13200 / 26500	13200 / 26500	13200 / 21100	13200 / 17300	13200 / 14600	12600	—	—	—	—	—		
	131 - 70	13200 / 26500	13200 / 26500	13200 / 22300	13200 / 18500	13200 / 15700	13200 / 13700	—	—	—	—	—	+	
115	115 - 67	13200 / 26500	13200 / 26500	13200 / 21400	13200 / 17500	13200 / 14800	—	—	—	—	—	—		
	115 - 70	13200 / 26500	13200 / 26500	13200 / 22500	13200 / 18600	13200 / 15900	—	—	—	—	—	—	+	
98	98 - 68	13200 / 26500	13200 / 26500	13200 / 21500	13200 / 17600	—	—	—	—	—	—	—		
	98 - 71	13200 / 26500	13200 / 26500	13200 / 22600	13200 / 18700	—	—	—	—	—	—	—	+	

Datos válidos para / Valid data for

H ≤ 230 ft



H

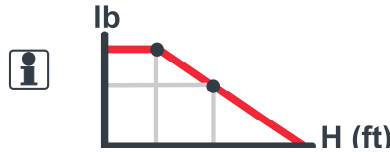
 **FEM 1005 - C25**



Reservado el derecho a modificaciones sin previo aviso. Declinamos toda responsabilidad derivada de la información proporcionada / Subject to modification, without prior notice. This information is supplied without liability




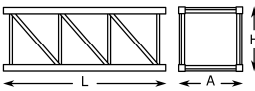
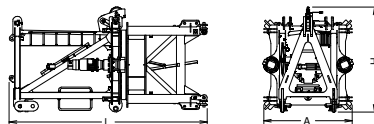
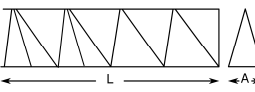
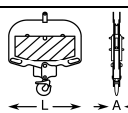
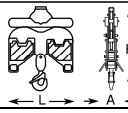
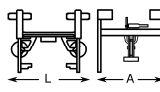
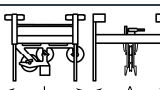
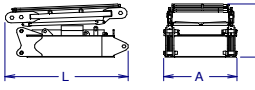
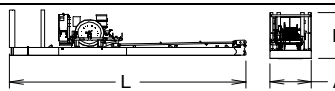
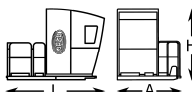

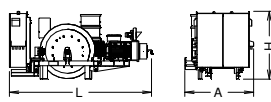
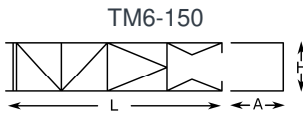
<b>EC60125VF</b> 44,1 kW	<b>*EC60152VF</b> 45 kW	<b>*EC88225VF</b> 65 kW
<p><math>H \leq</math> SR 873 ft DR 436 ft</p>	<p><math>H \leq</math> SR 1752 ft DR 876 ft</p>	
<p>2303 ft</p>	<p>4521 ft</p>	

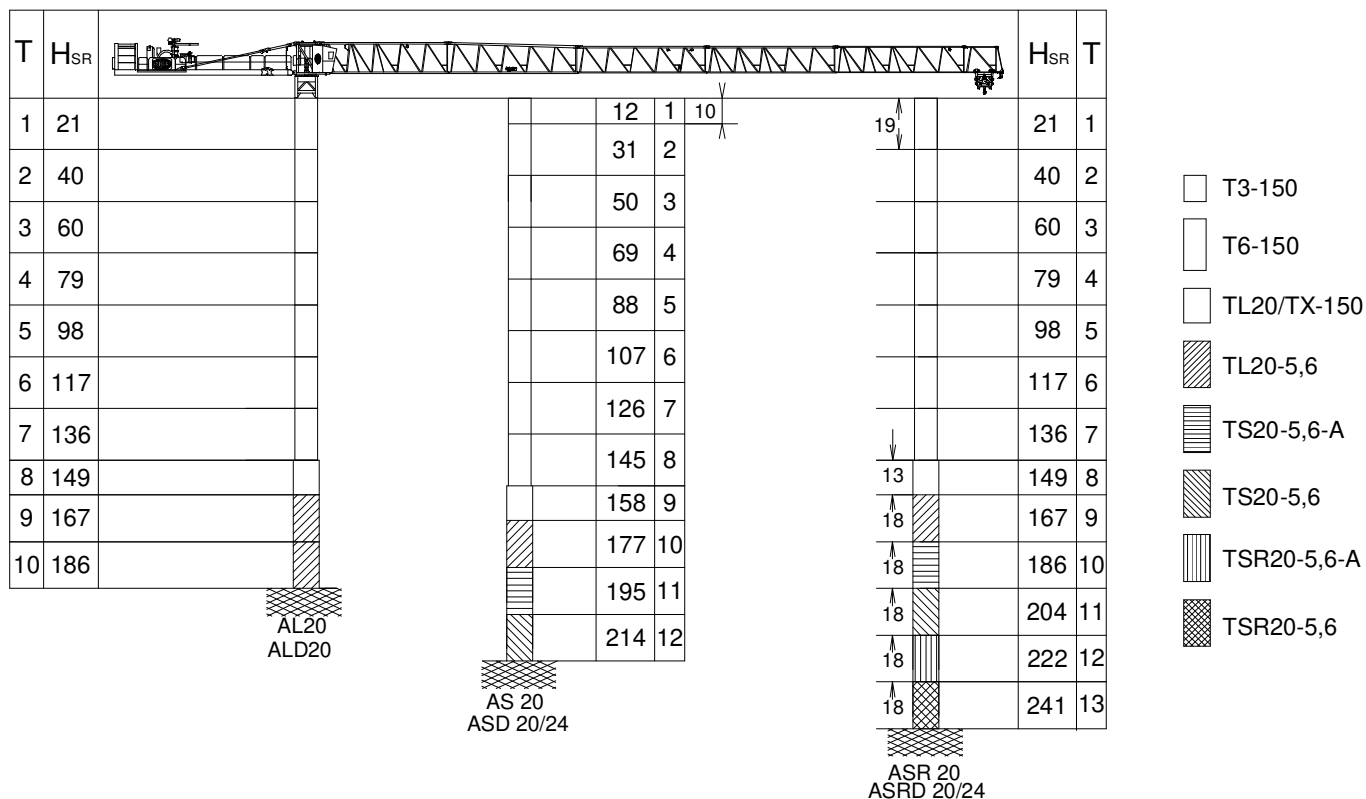


<b>OG1507VF</b> 2 x 5,5 kW	<b>TC770VF</b> 5,5 kW	<b>TG2020VF</b> 2 x 7,3 kW	<b>TH1506</b> 11 kW
<p>0...0,8 r/min sl/min</p>	<p>13200 lb 0...230 ft/min 26500 lb 0...115 ft/min</p>	<p>0...66 ft/min</p>	<p>3 ft/min</p>

3 ~ 400V 50Hz  
480V 60Hz

KVA			
EC60125VF	46	58	71
EC60152VF	46	58	71
EC88225VF	51	67	82

		L (ft)	A (ft)	H (ft)	P/W (lb)	
<b>Torre inferior</b> Lower tower	TI-6-150		20.3	7.2	7.2	7790
<b>Torre</b> Tower	T6-150		20.3	6.1	6.1	6080
	TD6-150		20.3	6.1	6.1	6460
	T3-150		10.7	6.1	6.1	3420
	T12-150		39.4	6.1	6.1	11420
<b>Torre asiento pista + punta de torre + orientación</b> Slewing table + tower head + slewing mechanism			15.2	6.8	8.2	14880
<b>Tramo de pluma</b> Jib section	P23-31		33.7	4.4	8.2	5780
	P23-12+tr		33.7	3.7	8.1	5670
	P20-23		33.6	3.7	7.3	3730
	P20-24		33.4	3.7	7.2	2660
	P20-15		33.4	3.7	7.1	1800
	P20-26		33.4	3.7	7.3	1290
	P20-17		17.0	3.7	7.3	770
	PP20-1		2.9	4.2	8.2	290
<b>Polipasto</b> Hook assembly	SR 13200 lb		2.8	0.7	3.7	485
	SR / DR 26500 lb		3.3	1.3	4.3	860
<b>Carro</b> Trolley	SR 13200 lb		5.1	6.3	6.2	705
	SR / DR 26500 lb		5.8	6.4	6.1	880
<b>Contrapluma</b> Counterjib	C1-12		7.9	4.7	3.6	2380
	C2-12		39.3	6.9	8.2	20380
<b>Plataforma y cabina</b> Platform and cabin			11.5	6.8	7.9	2470
<b>Armario eléctrico y plataforma</b> Electrical cabinet and platform			8.7	4.3	7.7	1810
<b>Soporte y elevación (sin cable)</b> Support and hoisting (without rope)			12.5	6.0	6.0	8180
<b>Estructura torre de montaje</b> Jacking cage structure	TM6-150		33.9	7.9	7.6	7720



T: Torre / Tower | H: Altura / Height |  $H_{SR/DR} = H_{SR} - 2 \text{ ft}$

Otras configuraciones de torre / Other tower configuration

TRANSPORTE / TRANSPORT



Viento fuera de servicio / Out of service wind

Consultar / Consult

En servicio / In service

Fuera de servicio / Out of service

\* Opcional / Optional



Ctra./ Rd. Madrid – Irún - Km. 415 - 20213 IDIAZABAL (Gipuzkoa) - ESPAÑA / SPAIN  
 P.O. Box, 23 - 20.200 - BEASAIN - E-mail: jaso@jaso.com  
 Tel. +34 943 - 18 70 00 • Fax. +34 943 - 18 70 20  
[www.jaso.com](http://www.jaso.com)

11/04/2025

FEM 1005 - C25

DELEGACIÓN / DEALER