

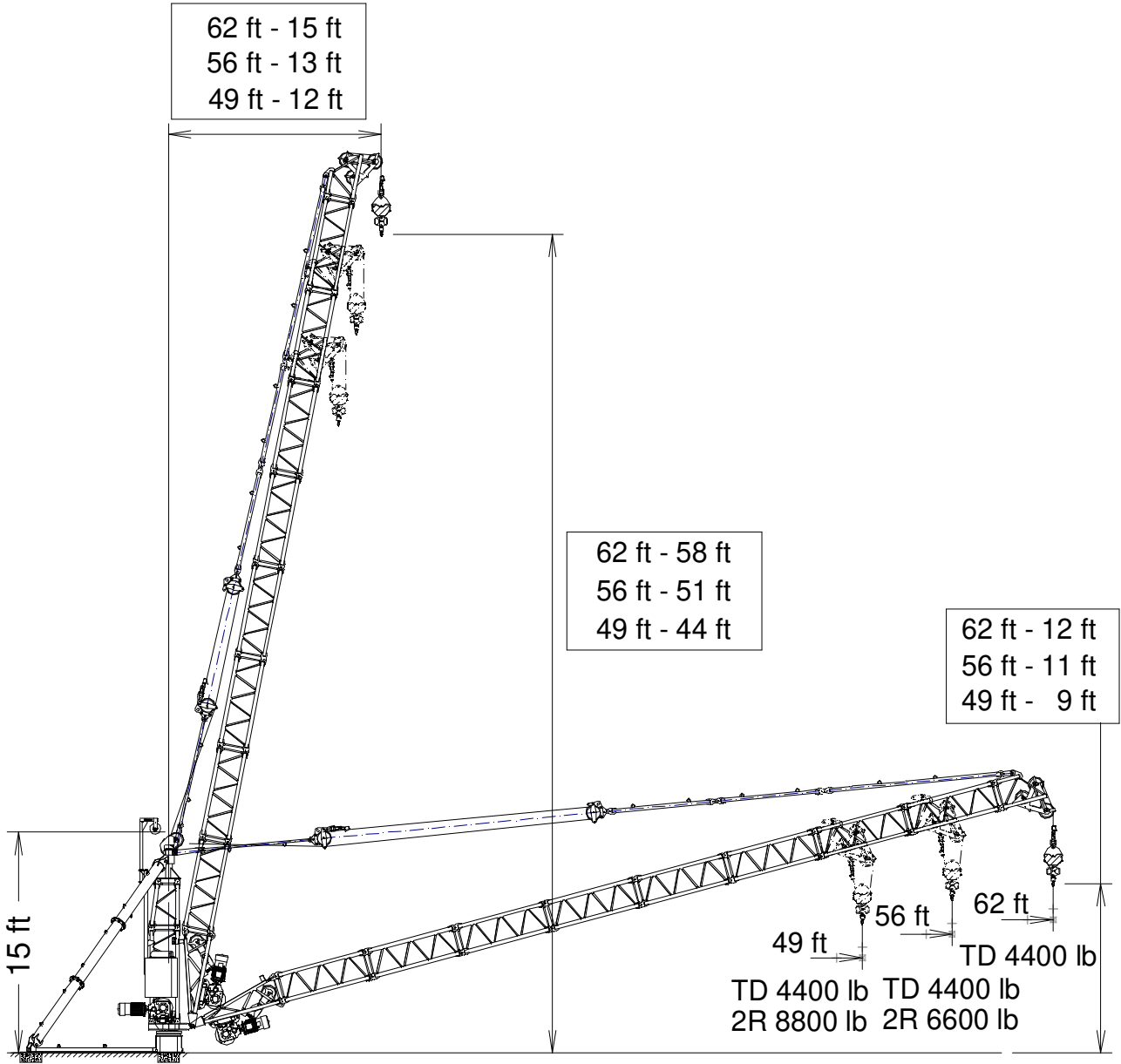


# J1920.DC

FEM 1001

GRUA DERRICK / DERRICK CRANE

UNE-EN-ISO 9001



124 mph	49 ft
109 mph	56 ft
96 mph	62 ft

**CUSTOMIZE YOUR CRANE**

**OPTIMUS**  
line

OPTI Cube	TC Diagnosis SYSTEM	SAFETY Pack	Customization	HIGH POWER Motors








Reservado el derecho a modificaciones sin previo aviso. Declinamos toda responsabilidad derivada de la información proporcionada / Subject to modification, without prior notice. This information is supplied without liability

16/04/2025








**CARGAS / LOADS**

**J1920.DC**




 <p><b>TD/2R</b></p>					
 <p><b>2R</b></p>	<p><b>TD</b> 4400 lb ...(ft)</p>		<b>49</b>	<b>56</b>	<b>62</b>
<b>62</b>	8800 lb ...(ft)		4400	4400	4400
<b>56</b>			4400	4400	-
<b>49</b>	49	49	8800	-	-
 <p><b>2R</b> 6600 lb ...(ft)</p>					
<b>56</b>	56		<b>49</b>	<b>56</b>	<b>62</b>
			6600	6600	-

**CARACTERISTICAS DE MECANISMOS / MECHANISMS FEATURES**

**J1920.DC**

 <p><b>EC1040VF</b> 7,5 kW</p>			 <p><b>OG604VF</b> 2 x 2,2 kW</p>	 <p><b>EP1015VF</b> 7,5 kW</p>
 <p>lb ft/min</p>	2200 0 ... 131	4400 0 ... 66	0...0,4 r/min sl/min	1,5 min
 <p>lb ft/min</p>	4400 0 ... 66	8800 0 ... 33		
 <p>H ≤</p>	<p>TD 1968 ft</p> <p>2R 984 ft</p>	 <p>2556 ft</p>		

 3~ 400V 50Hz  
480V 60Hz

<b>KVA</b>			
<b>EC1040VF</b>	13	14	16

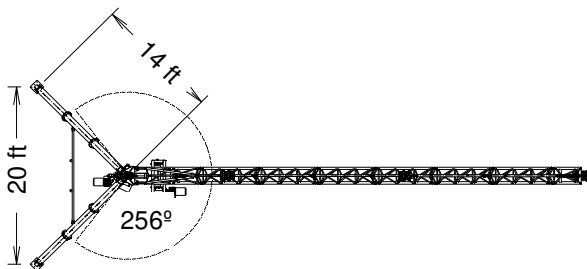
Datos válidos para / Valid data for



2R H ≤ 656 ft  
TD H ≤ 1312 ft

**TRANSPORTE / TRANSPORT**

**J1920.DC**





Transporte grúa completa / Transport of whole crane

Caja marítima / Liftvan



9.5 x 7.4 x 7.3 ft – 880 lb  
Derrick – 10600 lb

	
124 mph	49 ft
109 mph	56 ft
96 mph	62 ft



Reservado el derecho a modificaciones sin previo aviso. Declinamos toda responsabilidad derivada de la información proporcionada / Subject to modification, without prior notice. This information is supplied without liability

		L (ft)	A (ft)	H (ft)	P/W (lb)
Base punta de torre + orientación Tower head base + slewing		2.5	3.3	2.7	1130
Torre asiento pista / Slewing table		1.3	2.2	2.2	260
Tramo de pluma - Torre / Jib section – Tower		7.0	2.2	2.6	290
Tramo de pluma I / Jib section I		6.9	1.9	2.2	200
Punta de pluma / Jib end		3.9	1.9	4.5	295
Torre inferior / Lower tower		6.9	1.9	2.2	230
Torre superior / Top tower		3.6	1.9	2.2	115
Punta de torre / Tower head		3.6	2.1	2.1	390
Puntal / Pillar		6.4	-	1.1	205
		5.9	-	1.1	215
Plumín / Auxiliary jib		11.0	-	1.6	130
Polipasto / Hook assembly		1.2	1.3	2.9	420
Pasteca / Reeving Block		1.2	1.5	1.5	160
Larguero inferior / Lower crossbar		13.1	-	1.0	115
Elevación carga / Hoisting		4.2	4.1	1.8	940
Elevación pluma / Luffing		1.9	3.9	1.8	620
Limitador sobrecarga / Overload limiter		1.0	1.2	1.1	60
Armario electric / Electrical cupboard		1.2	2.1	3.2	200

124 mph	49 ft
109 mph	56 ft
96 mph	62 ft



Ctra./ Rd. Madrid – Irún - Km. 415 - 20213 IDIAZABAL (Gipuzkoa) - ESPAÑA / SPAIN  
 P.O. Box, 23 - 20.200 - BEASAIN - E-mail: jaso@jaso.com  
 Tel. +34 943 - 18 70 00 • Fax. +34 943 - 18 70 20  
[www.jaso.com](http://www.jaso.com)

16/04/2025

DELEGACIÓN / DEALER