

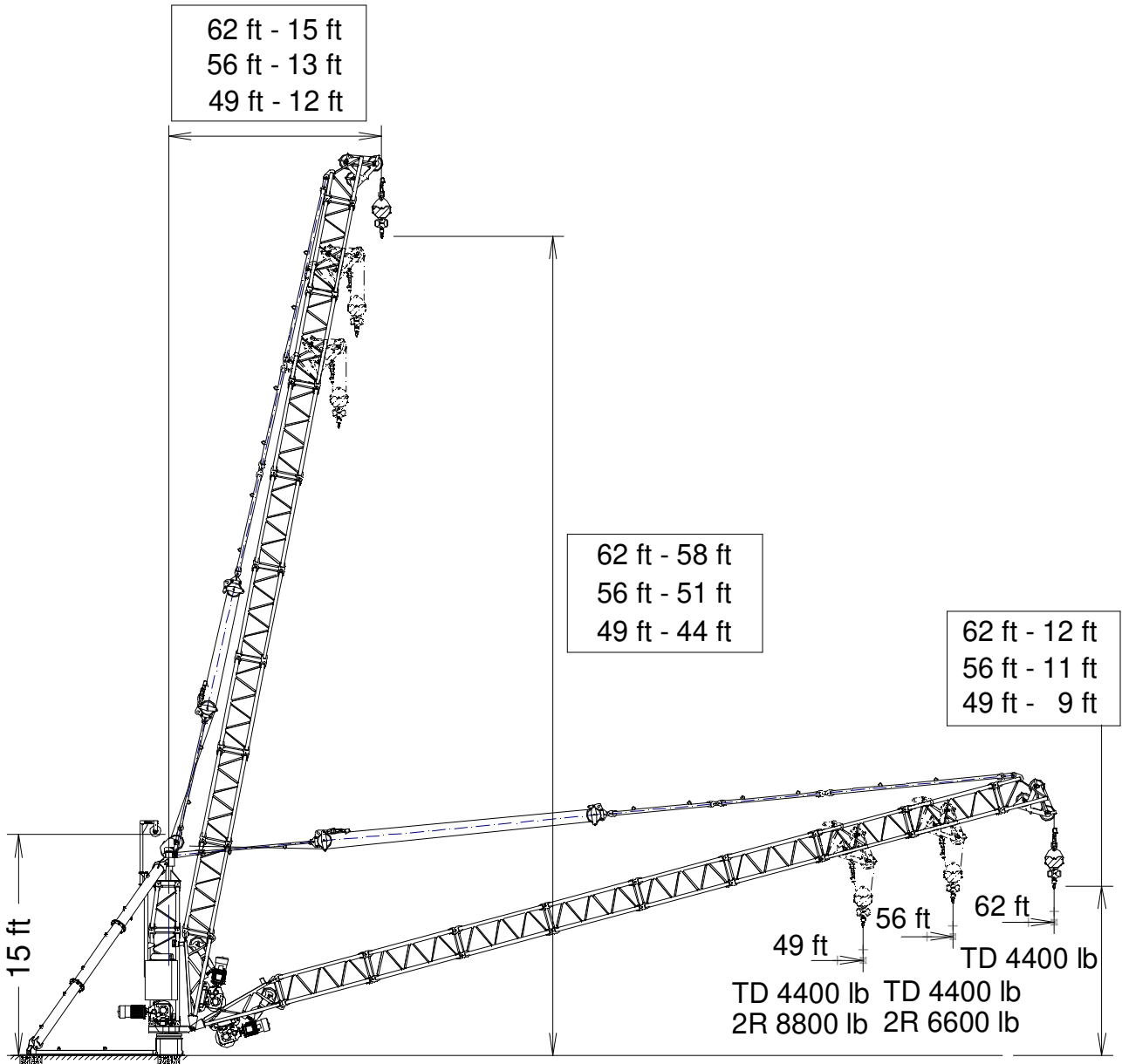


J1920.DC

FEM 1001

GRUA DERRICK / DERRICK CRANE

UNE-EN-ISO 9001



124 mph	49 ft
109 mph	56 ft
96 mph	62 ft

CUSTOMIZE YOUR CRANE

OPTIMUS
line






OPTI Cube	TC Diagnosis SYSTEM	SAFETY Pack	Customization	HIGH POWER Motors



Reservado el derecho a modificaciones sin previo aviso. Declinamos toda responsabilidad derivada de la información proporcionada / Subject to modification, without prior notice. This information is supplied without liability








CARGAS / LOADS

J1920.DC




 <p>TD/2R</p>					
 <p>2R</p>	<p>TD 4400 lb ...(ft)</p>		49	56	62
62	8800 lb ...(ft)	62	4400	4400	4400
56		56	4400	4400	-
49		49	8800	-	-
 <p>2R 6600 lb ...(ft)</p>					
56	56	6600	6600	6600	-

CARACTERISTICAS DE MECANISMOS / MECHANISMS FEATURES

J1920.DC

 <p>EC1040VF 7,5 kW</p>			 <p>OG604VF 2 x 2,2 kW</p>	 <p>EP1015VF 7,5 kW</p>
 <p>lb ft/min</p>	2200 0 ... 131	4400 0 ... 66	0...0,4 r/min sl/min	1,5 min
 <p>lb ft/min</p>	4400 0 ... 66	8800 0 ... 33		
 <p>H ≤</p>	<p>TD 1968 ft</p> <p>2R 984 ft</p>	 <p>2556 ft</p>		

 3~ 400V 50Hz
480V 60Hz

KVA			
EC1040VF	13	14	16

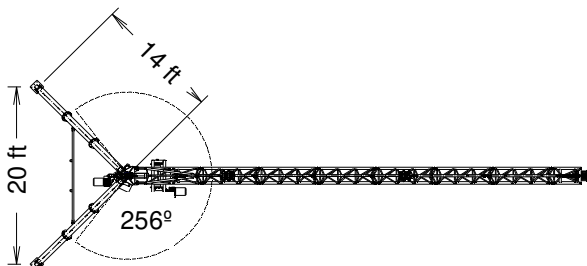
Datos válidos para / Valid data for



2R H ≤ 656 ft
TD H ≤ 1312 ft

TRANSPORTE / TRANSPORT

J1920.DC





Transporte grúa completa / Transport of whole crane

Caja marítima / Liftvan



9.5 x 7.4 x 7.3 ft – 880 lb
Derrick – 10600 lb

	
124 mph	49 ft
109 mph	56 ft
96 mph	62 ft



Reservado el derecho a modificaciones sin previo aviso. Declinamos toda responsabilidad derivada de la información proporcionada / Subject to modification, without prior notice. This information is supplied without liability

		L (ft)	A (ft)	H (ft)	P/W (lb)
Base punta de torre + orientación Tower head base + slewing		2.5	3.3	2.7	1130
Torre asiento pista / Slewing table		1.3	2.2	2.2	260
Tramo de pluma - Torre / Jib section – Tower		7.0	2.2	2.6	290
Tramo de pluma I / Jib section I		6.9	1.9	2.2	200
Punta de pluma / Jib end		3.9	1.9	4.5	295
Torre inferior / Lower tower		6.9	1.9	2.2	230
Torre superior / Top tower		3.6	1.9	2.2	115
Punta de torre / Tower head		3.6	2.1	2.1	390
Puntal / Pillar		6.4	-	1.1	205
		5.9	-	1.1	215
Plumín / Auxiliary jib		11.0	-	1.6	130
Polipasto / Hook assembly		1.2	1.3	2.9	420
Pasteca / Reeving Block		1.2	1.5	1.5	160
Larguero inferior / Lower crossbar		13.1	-	1.0	115
Elevación carga / Hoisting		4.2	4.1	1.8	940
Elevación pluma / Luffing		1.9	3.9	1.8	620
Limitador sobrecarga / Overload limiter		1.0	1.2	1.1	60
Armario electric / Electrical cupboard		1.2	2.1	3.2	200

124 mph	49 ft
109 mph	56 ft
96 mph	62 ft



Ctra./ Rd. Madrid – Irún - Km. 415 - 20213 IDIAZABAL (Gipuzkoa) - ESPAÑA / SPAIN
 P.O. Box, 23 - 20.200 - BEASAIN - E-mail: jaso@jaso.com
 Tel. +34 943 - 18 70 00 • Fax. +34 943 - 18 70 20
www.jaso.com

16/04/2025

DELEGACIÓN / DEALER