



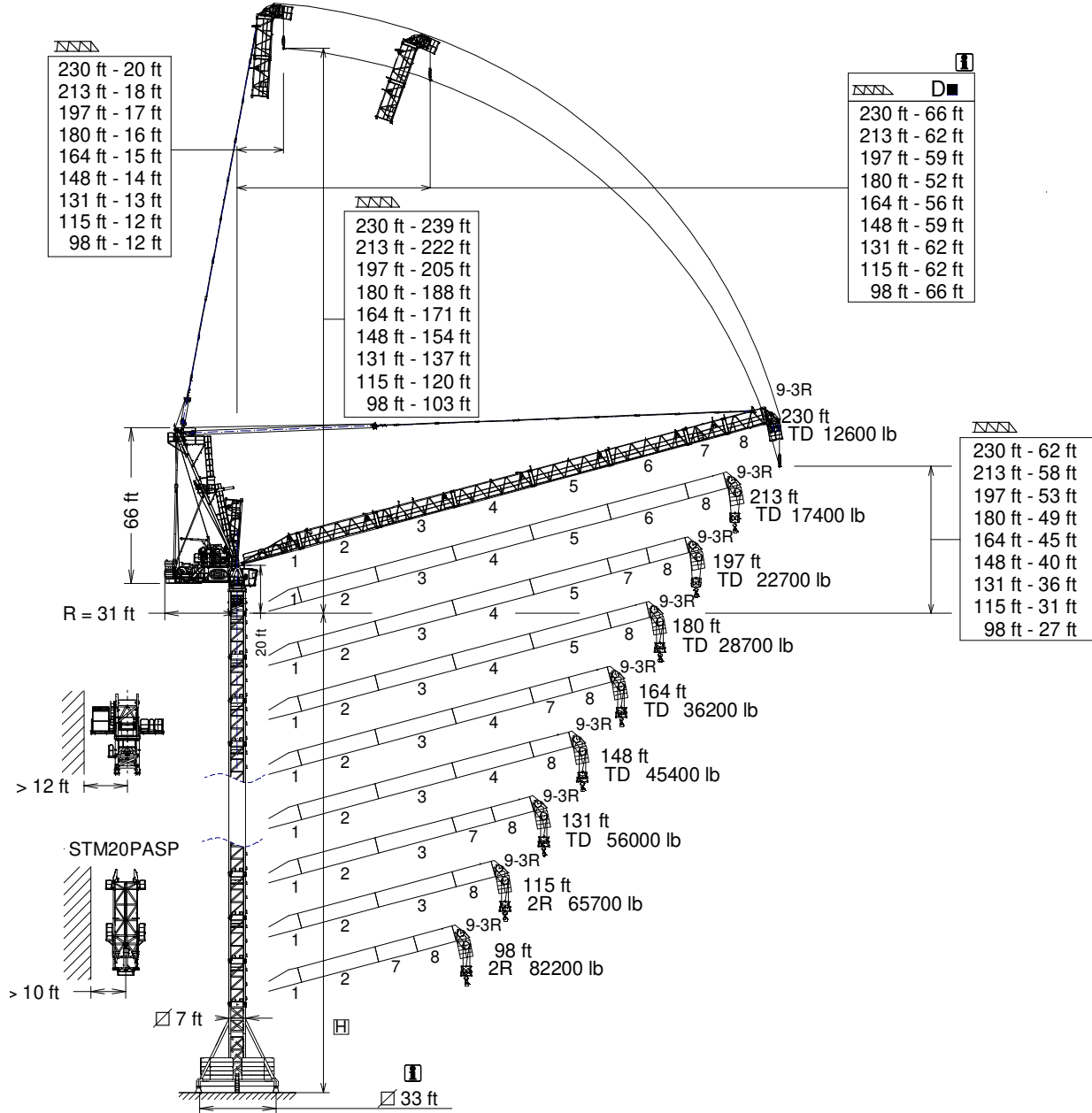
UNE 58-101
FEM 1001

J780PA

GRUA TORRE / TOWER CRANE

FEM 1001

UNE-EN-ISO 9001



D ■ Distancias fuera de servicio dependen de la altura de la torre / Out of service distances depend on tower height

H= Máxima altura de torre sin arriostrar (ft) / Maximum tower height without fastening (ft)

* Tramo pluma / Jib section

*Tramo pluma 1 / Jib section 1	214.40.000
*Tramo pluma 2 / Jib section 2	214.41.000
*Tramo pluma 3 / Jib section 3	214.42.000
*Tramo pluma 4 / Jib section 4	214.43.000
*Tramo pluma 5 / Jib section 5	214.44.000

*Tramo pluma 6 / Jib section 6	214.45.000
*Tramo pluma 7 / Jib section 7	214.46.000
*Tramo pluma 8 / Jib section 8	214.47.000
* Tramo pluma 9-3R / Jib section 9-3R	214.48.000

TSP20	214.31.300
TSP20-5.6	214.31.100
TSP24-5.6	214.32.200
TSP24/TSP20	212.36.000

CUSTOMIZE YOUR CRANE

OPTIMUS
line



OPTI Cube



TC Diagnosis SYSTEM



CLIMBING Solution



SAFETY Pack



Customization



ECO Mode



COMFORT Cabin



HIGH POWER Motors



JL25 Tower Crane Elevator

SMARTLINK


BE SMART keep control




Reservado el derecho a modificaciones sin previo aviso. Declinamos toda responsabilidad derivada de la información proporcionada / Subject to modification, without prior notice. This information is supplied without liability

25/04/2025

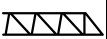


	TD @ ...(ft)	82	98	115	131	148	164	180	197	213	230
230	121	61700	61700	61700	54000	43200	34600	27600	21800	16800	12600
213	121	61700	61700	61700	54000	43400	35100	28000	22300	17400	-
197	121	61700	61700	61700	54000	43700	35300	28400	22700	-	-
180	121	61700	61700	61700	54200	43900	35500	28700	-	-	-
164	122	61700	61700	61700	54700	44300	36200	-	-	-	-
148	123	61700	61700	61700	55800	45400	-	-	-	-	-
131	124	61700	61700	61700	56000	-	-	-	-	-	-
115	115	61700	61700	61700	-	-	-	-	-	-	-
98	98	61700	61700	-	-	-	-	-	-	-	-



	2R max (lb)	@ ...(ft)	66	82	98	115	131	148	164	180	197	213
213	92600	89	92600	92600	79100	61900	49200	39000	31100	24500	19000	14300
197	123500	72	123500	103200	79400	62200	49400	39500	31500	25100	19600	-
180	123500	72	123500	103400	79600	62600	49800	39900	32000	25600	-	-
164	123500	72	123500	103600	80000	63300	50700	41000	33100	-	-	-
148	123500	72	123500	104500	81100	64600	52000	42300	-	-	-	-
131	123500	72	123500	104700	81600	65300	52900	-	-	-	-	-
115	123500	72	123500	104700	82000	65700	-	-	-	-	-	-
98	123500	72	123500	104900	82200	-	-	-	-	-	-	-



	3R max (lb)	@ ...(ft)	49	66	82	98	115	131	148	164	180
180	143300	62	143300	133200	98500	75400	58900	46300	36800	29100	22700
164	154300	58	154300	133200	98800	75800	59500	47400	37900	30200	-
148	165300	55	165300	133200	99400	76900	60800	48900	39500	-	-
131	165300	55	165300	133600	100100	77800	61950	50000	-	-	-
115	165300	55	165300	133800	100800	78700	62800	-	-	-	-
98	165300	55	165300	134000	101200	79400	-	-	-	-	-

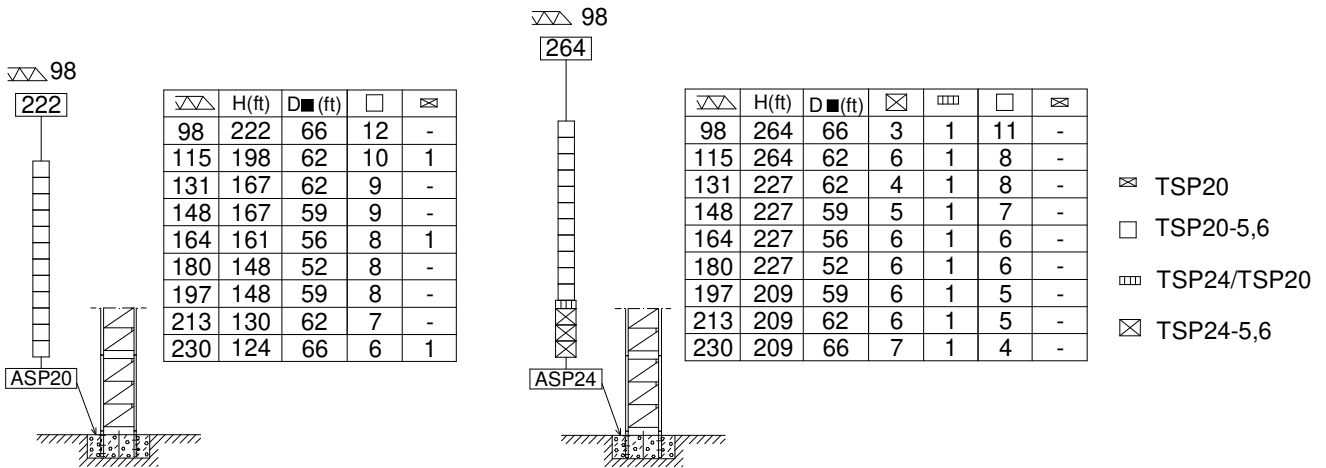
Datos válidos para / Valid data for



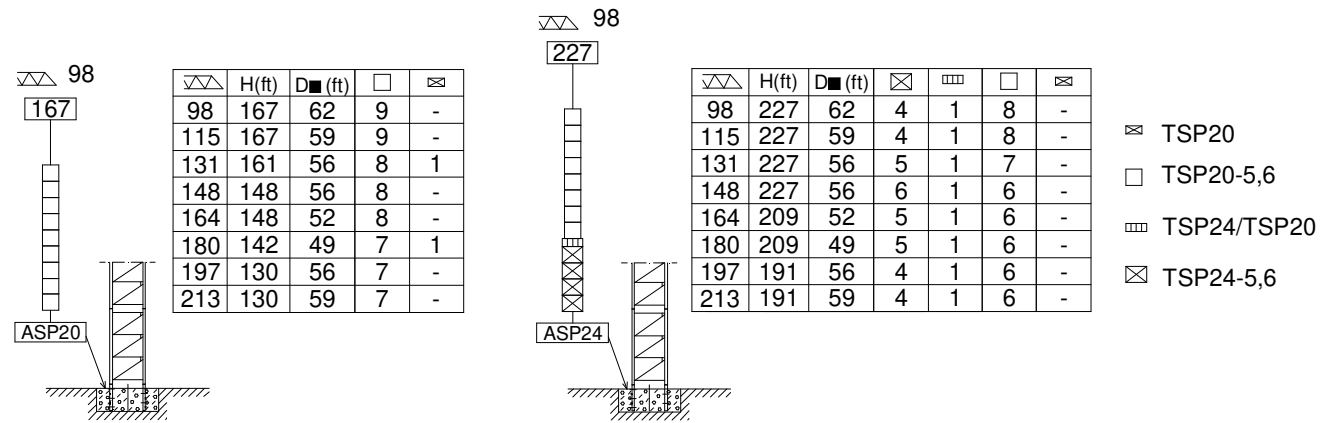
3R H ≤ 344 ft
2R H ≤ 361 ft
TD H ≤ 377 ft

(H) ESTACIONARIA 1 / STATIONARY 1

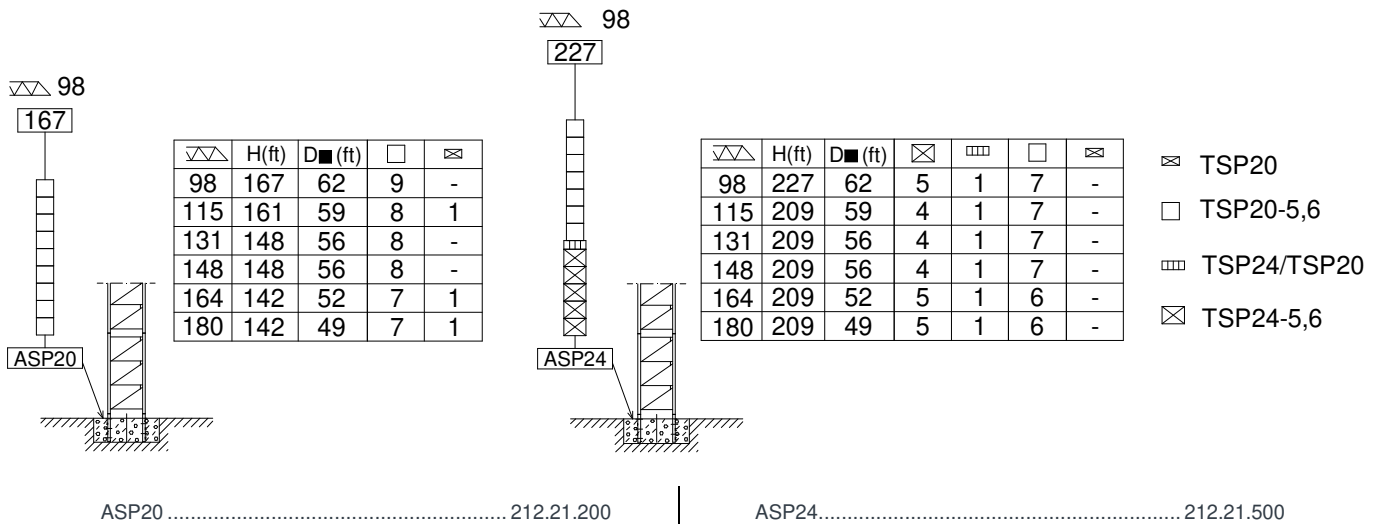
TD



2R



3R



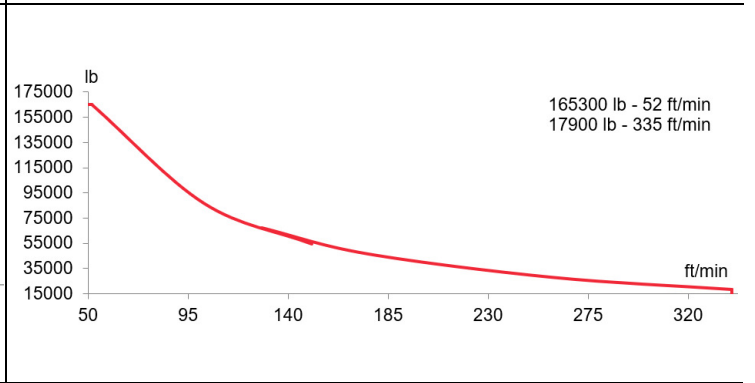
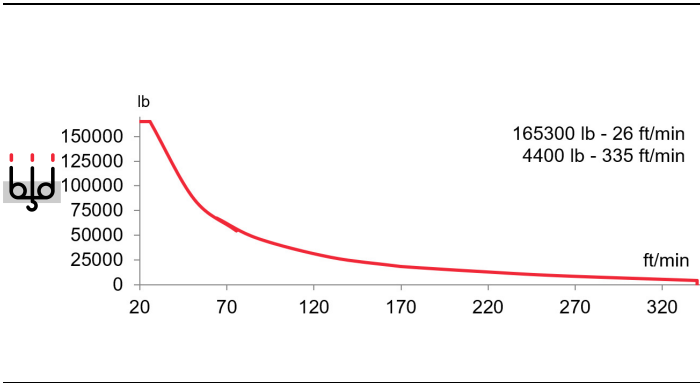
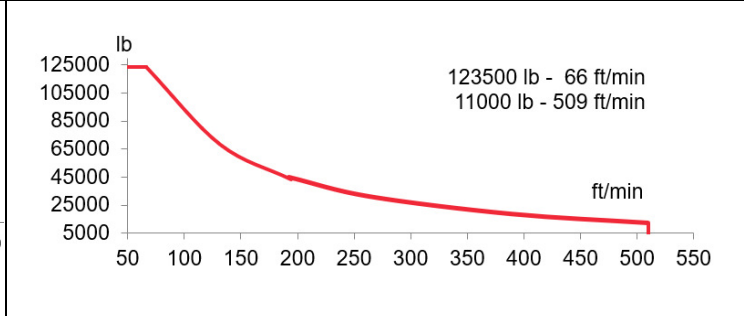
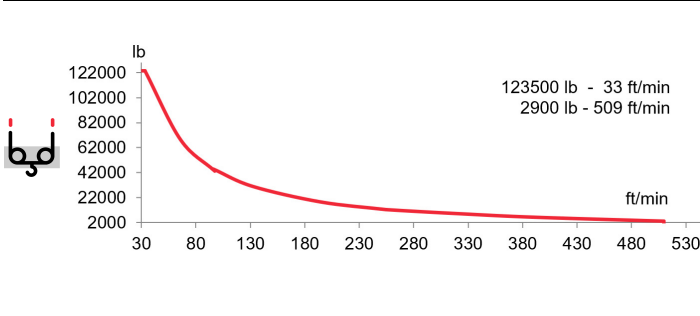
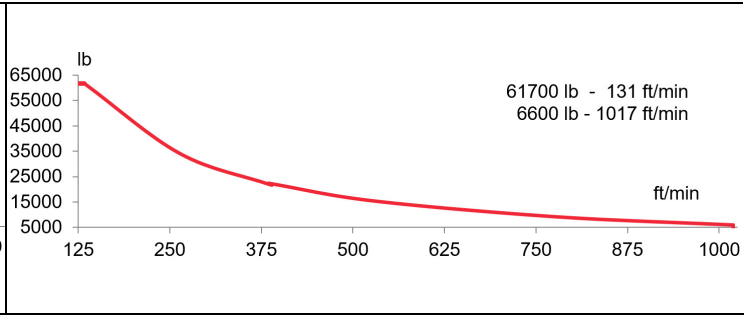
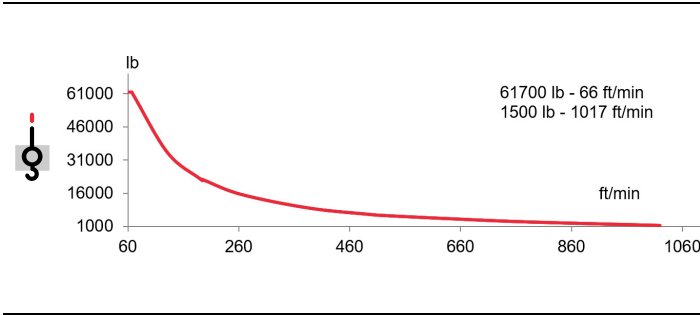
H= Máxima altura de torre sin arriostrar (ft) / Maximum tower height without fastening (ft)



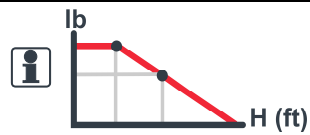
EC300310VF

110 kW

220 kW



$H \leq$
 TD 3304 ft
 2R 1654 ft
 3R 1102 ft



OG4007VF
 2 x 15 kW

0...0,7
 r/min
 sl/min

EP15020VF
 110 kW

1,6... 2,4
 min

TH6006
 45 kW

2
 ft/min

⚡ 3~ 400V 50Hz
 480V 60Hz

KVA			
EC300310VF - 110kW	195	221	248
EC300310VF - 220kW	266	328	390

		L (ft)	A (ft)	H (ft)	P/W (lb)	
Torre / Tower	TSP20	14.4	7.5	7.8	12380	
	TSP20-5,6	20.2	7.5	7.8	16900	
	TSP24-5,6	20.2	9.0	9.4	18290	
Torre asiento pista, torre superior y orientación Slewing table, top tower and slewing mechanism			23.8	7.6	8.6	56310
Punta de torre / Top tower			10.5	7.5	8.0	13000
Torre asiento pista + base punta de torre + orientación Slewing table + tower head base + slewing mechanism			17.1	7.6	8.3 7.4	43310
Tramo de pluma Jib section	1	29.1	7.5	7.4	8690	
	2	34.7	7.1	7.8	9510	
	3	34.7	6.5	7.5	8180	
	4	34.7	6.5	7.9	7320	
	5	34.7	6.5	7.5	7250	
	6	34.7	6.5	7.4	6350	
	7	17.7	6.5	7.4	4000	
	8	17.7	6.5	7.5	5080	
	9-3R	6.6	6.7	11.8	6680	
Contrapluma 1 / Counterjib 1			14.7	7.5	8.3	21860
Contrapluma 2 / Counterjib 2			15.7	7.5	7.4	17780
Contrapluma 2 + Elevación pluma + pasteca Counterjib 2 + Luffing mech + Reeving block			16.7	8.7	8.9	42440
Elevación pluma / Luffing mech			9.4	8.1	6.8	18760
Pasteca / Reeving Block			11.0	3.5	6.7	4130
Mecanismo elevacion carga sin cable Hoisting mechanism without rope			12.5	10.2	8.3	44760
Polipasto / Hook assembly	TD/2R/3R		5.0	3.1	8.3	4480
	TD		1.9	1.3	5.7	1490
Tirante sostén pluma / Jib support tie			17.8	1.2	1.3	3060
Parte superior + mecanismo auxiliar Top part + auxiliary winch			38.8	7.5	6.5	39240

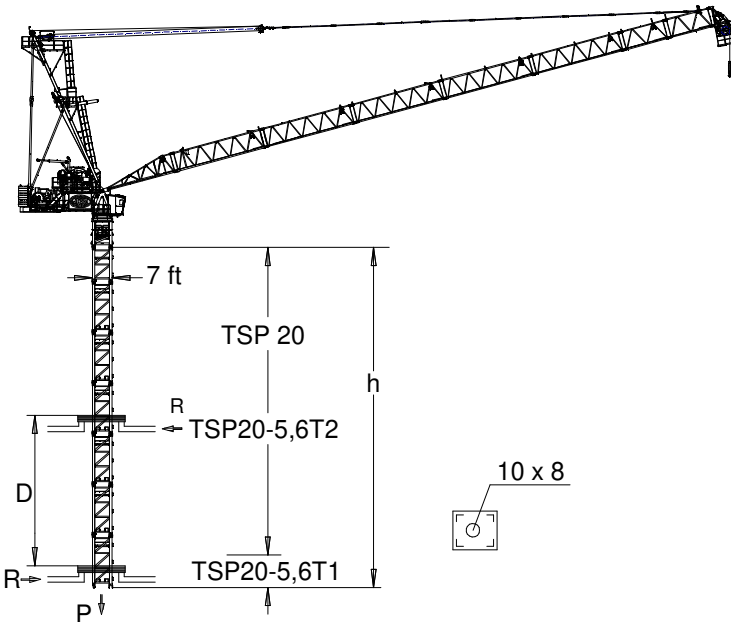
LISTA DE EMBARQUE / PACKING LIST

J780PA

		L (ft)	A (ft)	H (ft)	P/W (lb)
Plataforma y cabina / Platform and cabin		12.0	7.5	8.1	2760
Contrapeso / Counterweight		14.8	0.8	3.3	17640
Transporte torre de montaje Jacking cage transport	TM20PASP-5,6 - Package 1 	38.1	7.2	8.2	26270
	TM20PASP-5,6 - Package 2 	38.3	6.6	8.2	31810

TREPADO / CLIMBING

J780PA



TSP20-5,6T1: 214.31.400
TSP20-5,6T2: 214.31.600

h_{max} :
TSP20-5,6T1 + 4 x TSP20-5,6 + TSP20-5,6T2 + TSP20

	▶	■
h (ft)	123	
D (ft)	44 - 56	
P (lbf)	695780	632840
Rmax (lbf)	198960	255160

h_{max} :
TSP20-5,6T1 + 5 x TSP20-5,6 + TSP20-5,6T2

	▶	■
h (ft)	129	
D (ft)	44 - 59	
P (lbf)	748610	621600
Rmax (lbf)	201200	266400

h_{max} :
TSP20-5,6T1 + 6 x TSP20-5,6 + TSP20-5,6T2

	▶	■
h (ft)	147	
D (ft)	41 - 69	
P (lbf)	786830	618220
Rmax (lbf)	188840	292250

Trepado interno / Internal climbing

Viento fuera de servicio / Out of service wind

Consultar / Consult

En servicio / In service

Fuera de servicio / Out of service

Opcional / Optional



Ctra./ Rd. Madrid – Irún - Km. 415 - 20213 IDIAZABAL (Gipuzkoa) - ESPAÑA / SPAIN
P.O. Box, 23 - 20.200 - BEASAIN - E-mail: jaso@jaso.com
Tel. +34 943 - 18 70 00 • Fax. +34 943 - 18 70 20
www.jaso.com

25/04/2025

FEM 1001

DELEGACIÓN / DEALER