



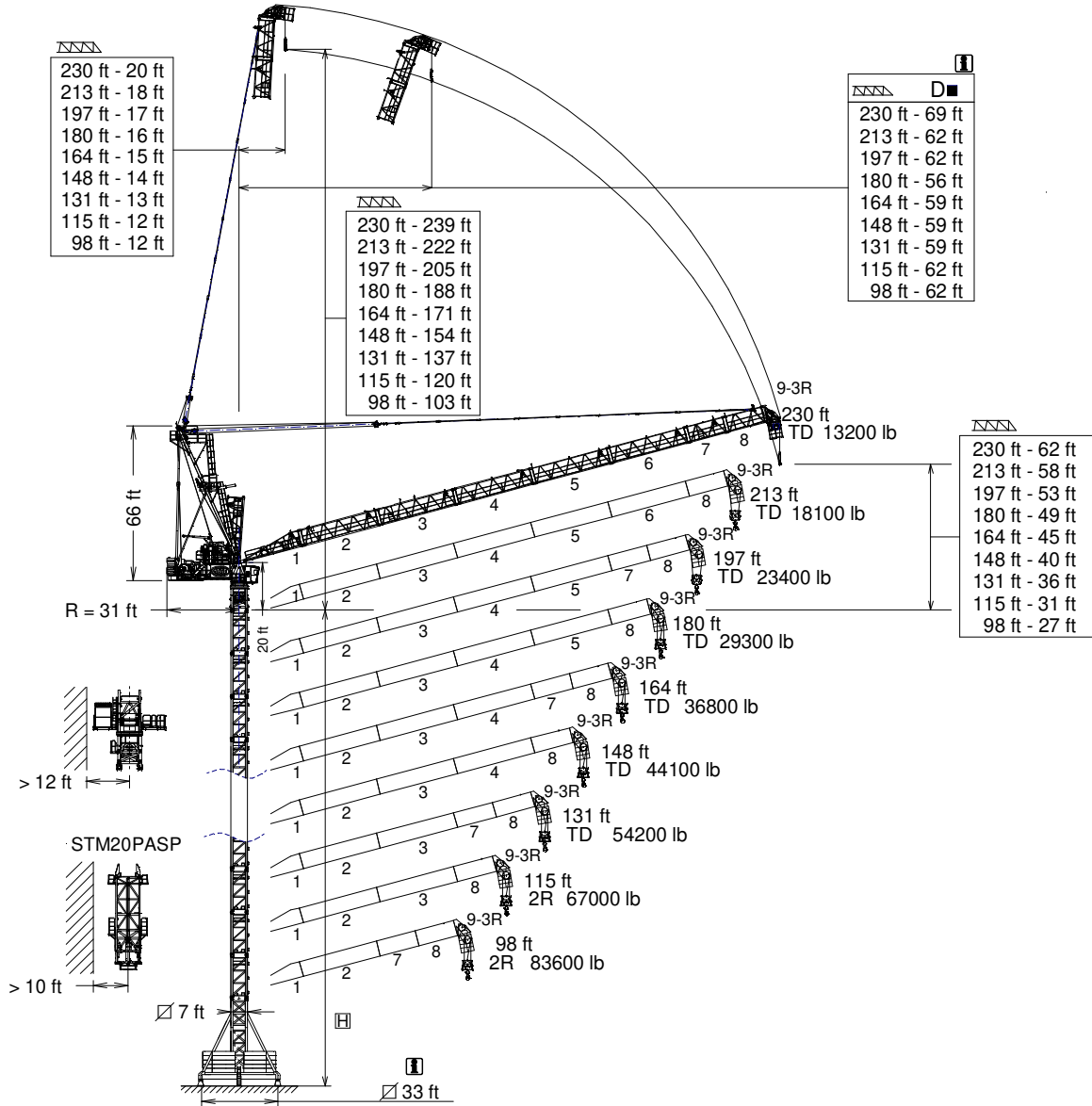
J780PA.60

UNE 58-101
FEM 1001

GRUA TORRE / TOWER CRANE

FEM 1001

UNE-EN-ISO 9001



D ■ Distancias fuera de servicio dependen de la altura de la torre / Out of service distances depend on tower height

H= Máxima altura de torre sin arriostrar (ft) / Maximum tower height without fastening (ft)

* Tramo pluma / Jib section

*Tramo pluma 1 / Jib setion 1	214.40.500
*Tramo pluma 2 / Jib setion 2	214.41.500
*Tramo pluma 3 / Jib setion 3	214.42.500
*Tramo pluma 4 / Jib setion 4	214.43.500
*Tramo pluma 5 / Jib setion 5	214.44.500

*Tramo pluma 6 / Jib setion 6	214.45.500
*Tramo pluma 7 / Jib setion 7	214.46.500
*Tramo pluma 8 / Jib setion 8	214.47.000
* Tramo pluma 9-3R / Jib setion 9-3R	214.48.500

TSP20	214.31.300
TSP20-5,6	214.31.100
TSP24-5,6	214.32.200
TSP24/TSP20	212.36.000

CUSTOMIZE YOUR CRANE

OPTIMUS
line



OPTI Cube



TC Diagnosis SYSTEM



CLIMBING Solution



SAFETY Pack



Customization



ECO Mode



COMFORT Cabin



HIGH POWER Motors



JL25 Tower Crane Elevator




SMARTLINK
BE SMART keep control




Reservado el derecho a modificaciones sin previo aviso. Declinamos toda responsabilidad derivada de la información proporcionada / Subject to modification, without prior notice. This information is supplied without liability




	TD @ ...(ft)	82	98	115	131	148	164	180	197	213	230
230	149	44100	44100	44100	44100	44100	35900	28700	22700	17600	13200
213	149	44100	44100	44100	44100	44100	35900	28900	23100	18100	-
197	149	44100	44100	44100	44100	44100	36200	29100	23400	-	-
180	149	44100	44100	44100	44100	44100	36200	29300	-	-	-
164	150	44100	44100	44100	44100	44100	36800	-	-	-	-
148	148	44100	44100	44100	44100	44100	-	-	-	-	-
131	131	44100	44100	44100	44100	-	-	-	-	-	-
115	115	44100	44100	44100	-	-	-	-	-	-	-
98	98	44100	44100	-	-	-	-	-	-	-	-



	2R max (lb)	@ ...(ft)	82	98	115	131	148	164	180	197	213	230
230	61700	119	61700	61700	61700	51600	41200	32800	25800	19800	15000	10800
213	88200	94	88200	82500	64800	51600	41200	32800	26000	20500	15700	-
197	88200	94	88200	82700	65000	51800	41400	33300	26500	20900	-	-
180	88200	94	88200	82700	65000	52000	41700	33500	26900	-	-	-
164	88200	94	88200	82700	65500	52500	42500	34400	-	-	-	-
148	88200	94	88200	83300	66400	53600	43700	-	-	-	-	-
131	88200	94	88200	83300	66800	54200	-	-	-	-	-	-
115	88200	94	88200	83300	67000	-	-	-	-	-	-	-
98	88200	95	88200	83600	-	-	-	-	-	-	-	-



	3R max (lb)	@ ...(ft)	66	82	98	115	131	148	164	180	197	213
213	92600	87	92600	92600	76900	60000	47400	37500	29500	23100	17900	13200
197	123500	71	123500	100500	77200	60400	47800	38100	30200	23800	18500	-
180	132300	67	132300	100800	77400	60800	48300	38600	30900	24500	-	-
164	132300	67	132300	101600	78500	61900	49400	39700	32000	-	-	-
148	132300	68	132300	102700	79600	63300	50900	41200	-	-	-	-
131	132300	68	132300	103600	80500	64200	51800	-	-	-	-	-
115	132300	68	132300	103800	80900	64600	-	-	-	-	-	-
98	132300	68	132300	103800	81100	-	-	-	-	-	-	-

Datos válidos para / Valid data for

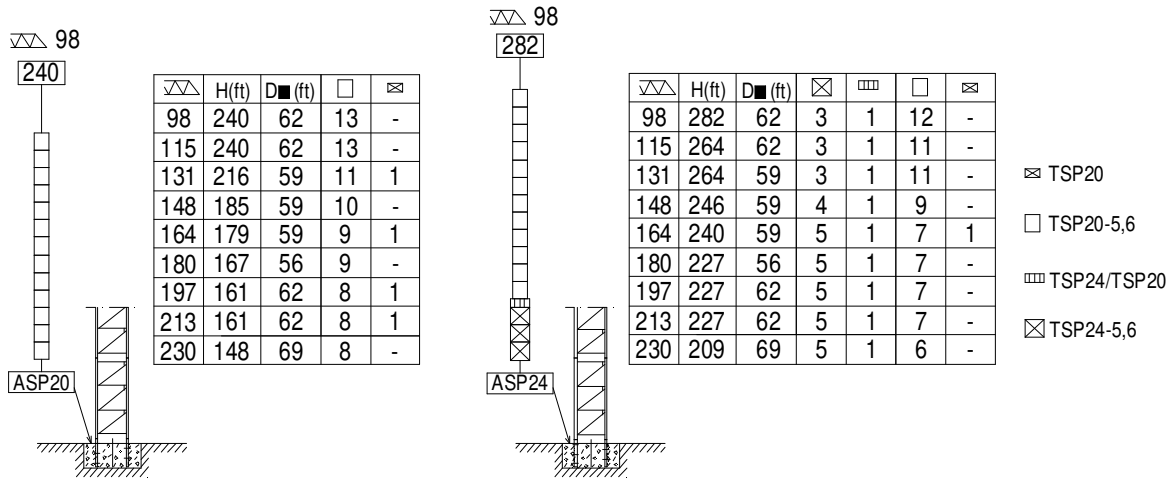


3R H ≤ 344 ft
2R H ≤ 361 ft
TD H ≤ 377 ft

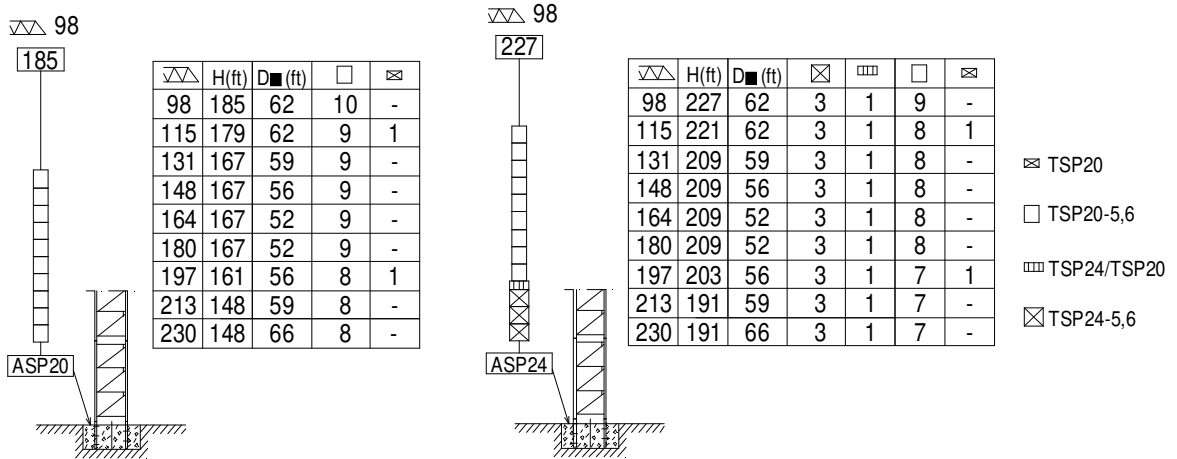


(H) ESTACIONARIA 1 / STATIONARY 1

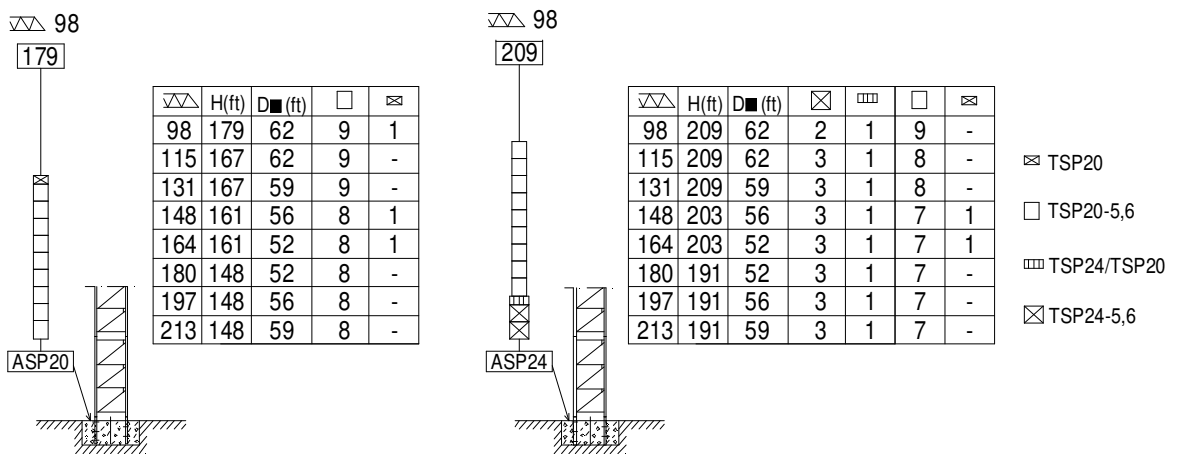
TD



2R



3R



ASP20 212.21.200

ASP24..... 212.21.500

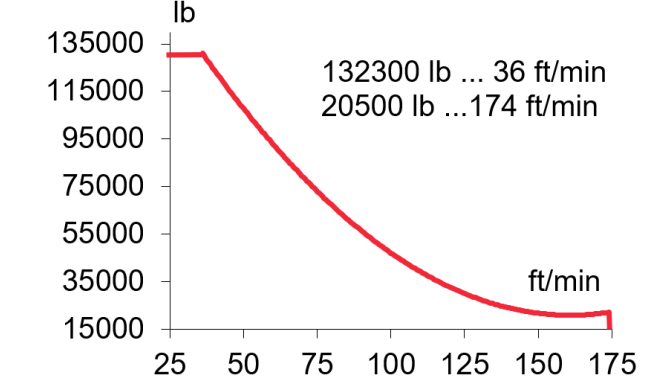
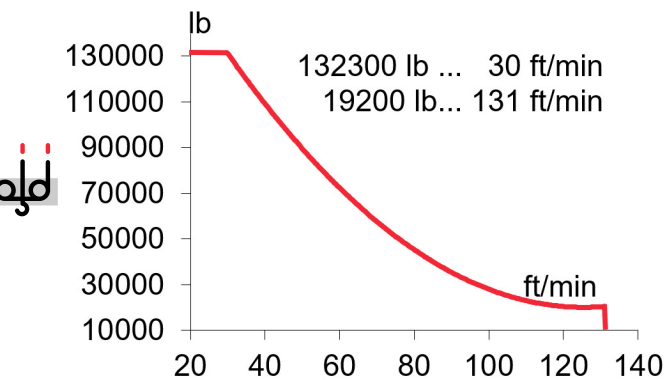
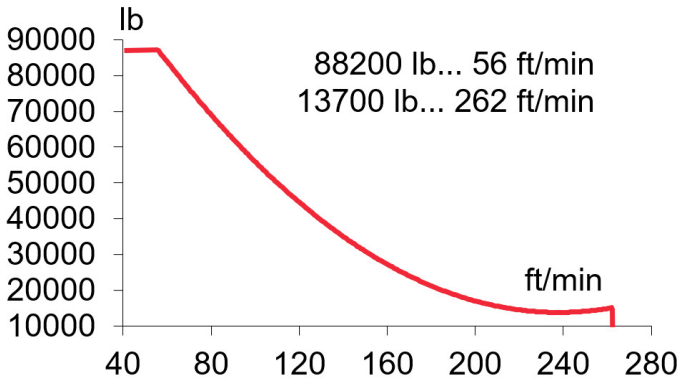
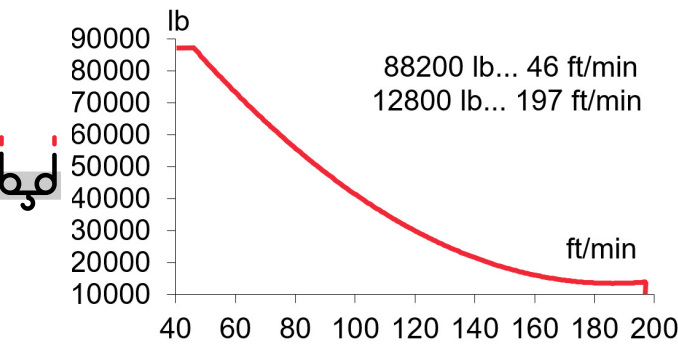
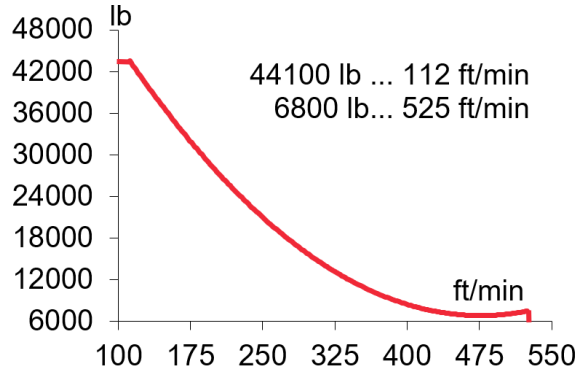
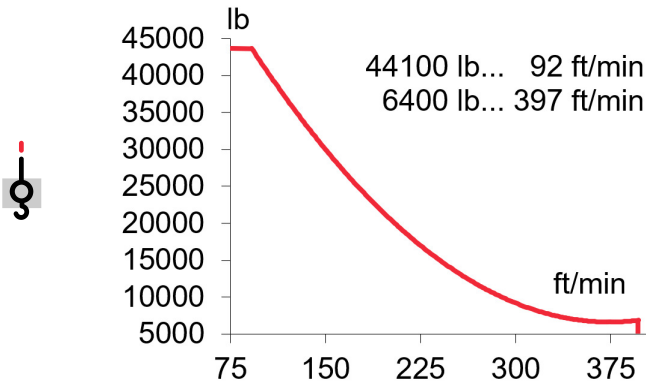
H= Máxima altura de torre sin arriostrar (ft) / Maximum tower height without fastening (ft)





EC150120VF
110 kW

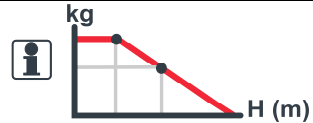
*** EC180160VF**
132 kW



TD 2612 ft
H ≤ 2R 1306 ft
3R 869 ft



3301 ft



OG4007VF
2 x 15 kW

0...0,7
r/min
sl/min

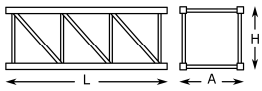
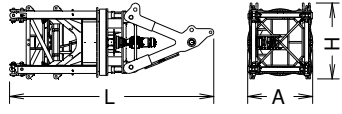
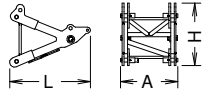
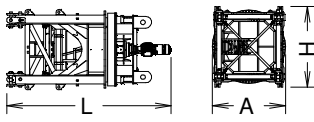
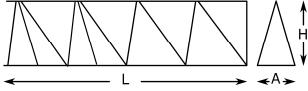
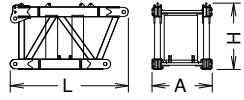
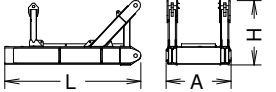
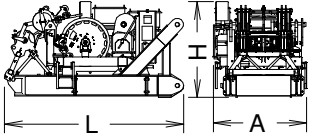
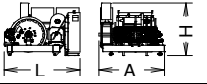
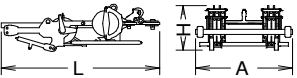
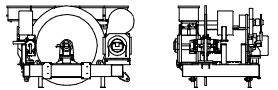
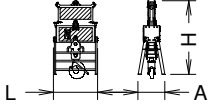
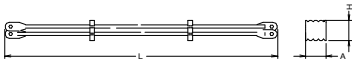
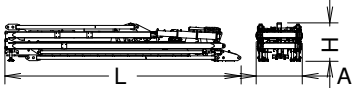


EP15020VF
110 kW

2
min

⚡ 3~ 400V 50Hz
480V 60Hz

KVA			
EC150120VF	195	221	248
EC180160VF	205	237	269

			L (ft)	A (ft)	H (ft)	P/W(lb)
Torre / Tower	TSP20		14.4	7.5	7.8	12380
	TSP20-5,6		20.2	7.5	7.8	16900
	TSP24-5,6		20.2	9.0	9.4	18290
Torre asiento pista, torre superior y orientación Slewing table, top tower and slewing mechanism			23.8	7.6	8.6	56310
Punta de torre / Top tower			10.5	7.5	8.0	13000
Torre asiento pista + base punta de torre + orientación Slewing table + tower head base + slewing mechanism			17.1	7.6	8.3	43310
Tramo de pluma Jib section	1		29.1	7.5	7.4	8690
	2		34.7	7.1	7.8	9510
	3		34.7	6.5	7.5	8180
	4		34.7	6.5	7.9	7320
	5		34.7	6.5	7.5	7250
	6		34.7	6.5	7.4	6350
	7		17.7	6.5	7.4	4000
	8		17.7	6.5	7.5	5080
	9-3R		6.6	6.7	11.8	6680
Contrapluma 1 / Counterjib 1			14.7	7.5	8.3	21860
Contrapluma 2 / Counterjib 2			15.7	7.5	7.4	17780
Contrapluma 2 + Elevación pluma + pasteca Counterjib 2 + Luffing mech + Reeving block			16.7	8.7	8.9	42440
Elevación pluma / Luffing mech			9.4	8.1	6.8	16470
Pasteca / Reeving Block			11.0	3.5	6.7	4130
Mecanismo elevacion carga sin cable / Hoisting mechanism without rope			13.4	10.4	6.7	22330
Polipasto / Hook assembly	2R/3R		5.0	3.1	8.3	3680
	TD		1.0	1.1	5.5	1080
Tirante sostén pluma / Jib support tie			17.8	1.2	1.3	3060
			17.8	1.2	1.3	3030
Parte superior + mecanismo auxiliar Top part + auxiliary winch			38.8	7.5	6.5	39240

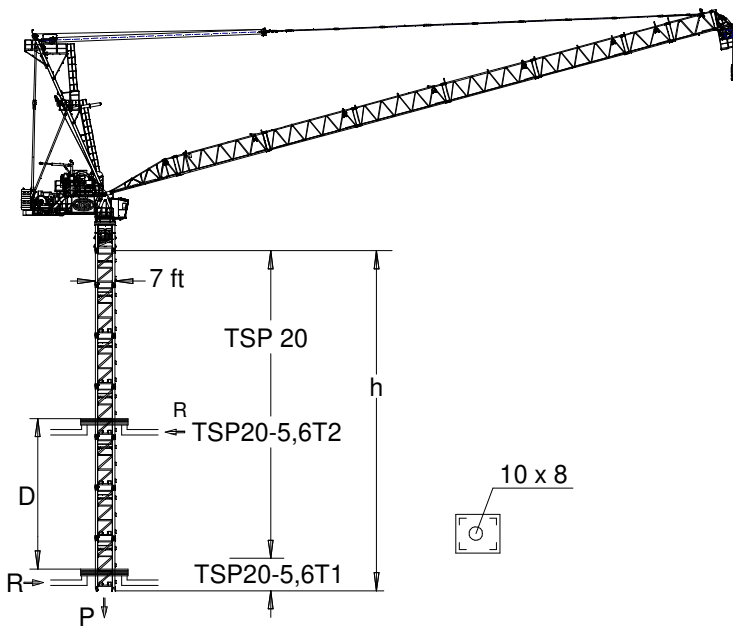
LISTA DE EMBARQUE / PACKING LIST

J780PA.60

		L (ft)	A (ft)	H (ft)	P/W (lb)
Plataforma y cabina / Platform and cabin		12.0	7.5	8.1	2760
Contrapeso / Counterweight		14.8 7.6	0.8 0.8	3.3 3.3	17640 8800
Transporte torre de montaje Jacking cage transport	TM20PASP-5,6 - Package 1 	38.1	7.2	8.2	26270
	TM20PASP-5,6 - Package 2 	38.3	6.6	8.2	31810

TREPADO / CLIMBING

J780PA.60



TSP20-5,6T1: 214.31.400
TSP20-5,6T2: 214.31.600

h _{max} : TSP20-5,6T1 + 6 x TSP20-5,6 + TSP20-5,6T2		
h (ft)	147	
D (ft)	51 - 69	
P (lbf)	689940	644980
Rmax (lbf)	181650	185020
h _{max} : TSP20-5,6T1 + 6 x TSP20-5,6 + TSP20-5,6T2		
h (ft)	147	
D (ft)	50 - 69	
P (lbf)	722310	632390
Rmax (lbf)	187720	143430
h _{max} : TSP20-5,6T1 + 6 x TSP20-5,6 + TSP20-5,6T2		
h (ft)	147	
D (ft)	47 - 69	
P (lbf)	751990	617100
Rmax (lbf)	196710	123640

Trepado interno / Internal climbing

Viento fuera de servicio / Out of service wind

Consultar / Consult

En servicio / In service

Fuera de servicio / Out of service

Opcional / Optional



Ctra./ Rd. Madrid - Irún - Km. 415 - 20213 IDIAZABAL (Gipuzkoa) - ESPAÑA / SPAIN
P.O. Box, 23 - 20.200 - BEASAIN - E-mail: jaso@jaso.com
Tel. +34 943 - 18 70 00 • Fax. +34 943 - 18 70 20
www.jaso.com

25/04/2025

FEM 1001

DELEGACIÓN / DEALER