



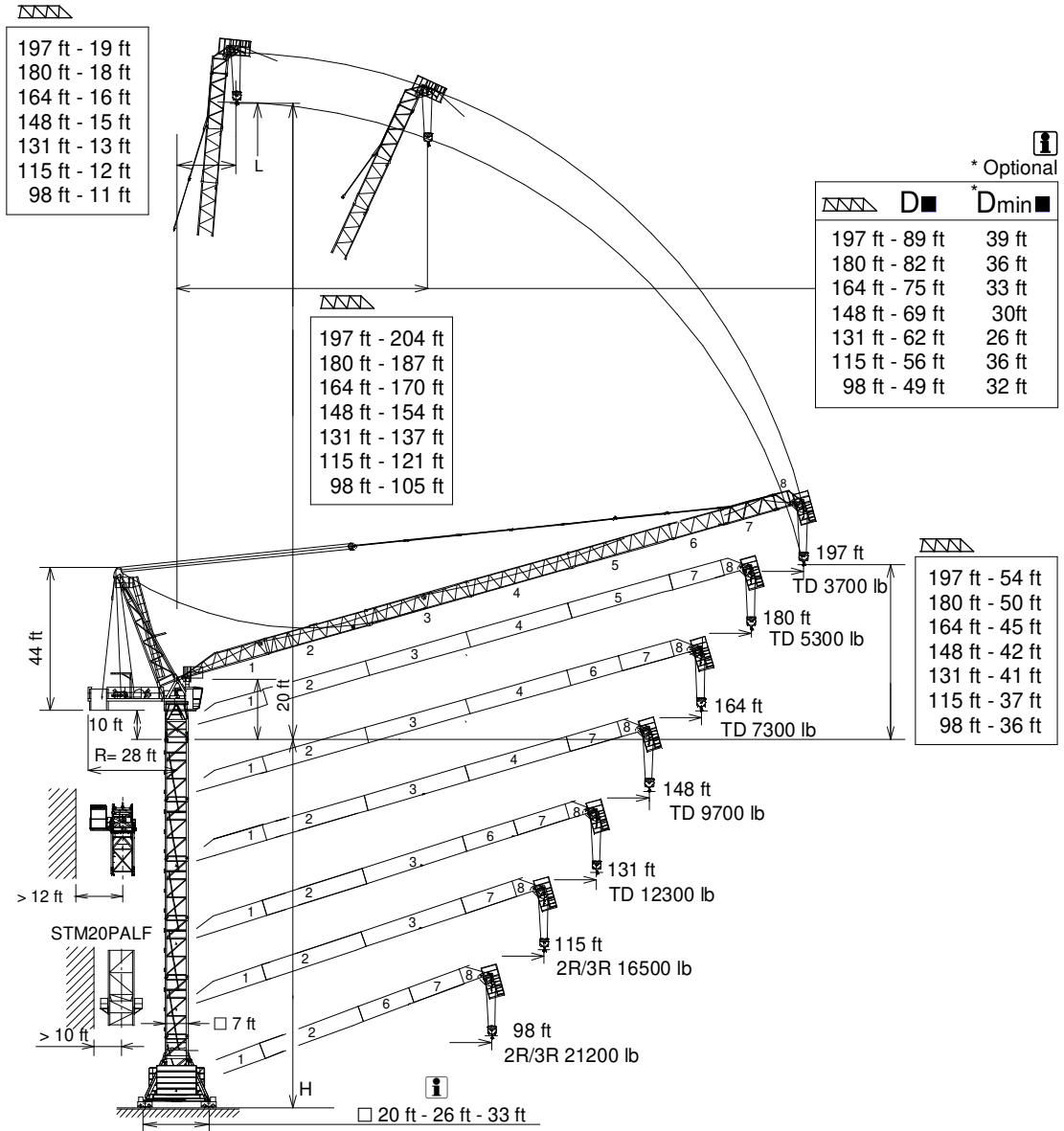
UNE 58-101
FEM 1001

J208PA

GRUA TORRE / TOWER CRANE

FEM 1001

UNE-EN-ISO 9001



H= Máxima altura de torre sin arriostrar (ft) / Maximum tower height without fastening (ft)

* Tramo pluma / Jib section

** Punta de pluma / Jib end

D ■ Distancias fuera de servicio dependen de la altura de la torre / Out of service distances depend on tower height

*Dmin ■ Distancias mínimas fuera de servicio dependen de la altura de la torre / Out of service minimum distances depend on tower height

*Tramo pluma 1 / Jib section 1	207.40.000
*Tramo pluma 2 / Jib section 2	207.41.000
*Tramo pluma 3 / Jib section 3	207.42.000
*Tramo pluma 4 / Jib section 4	207.43.000
*Tramo pluma 5 / Jib section 5	207.44.500

*Tramo pluma 6 / Jib section 6	207.44.000
*Tramo pluma 7 / Jib section 7	207.45.000
**Punta pluma 8 / Jib end 8	207.46.000
TL 20	153.31.000
TL 20-5.6	204.31.400

TS 20-5,6	204.31.200
TS 20-5,6A	204.31.500
TSR 20-5,6	206.31.000
TSR 20-5,6A	206.31.300

CUSTOMIZE YOUR CRANE

OPTIMUS
line JASD



OPTI Cube



TC Diagnosis SYSTEM



CLIMBING Solution



SAFETY Pack



Customization



ECO Mode



COMFORT Cabin



HIGH POWER Motors



JL25 Tower Crane Elevator



BE SMART keep control





Reservado el derecho a modificaciones sin previo aviso. Declinamos toda responsabilidad derivada de la información proporcionada / Subject to modification, without prior notice. This information is supplied without liability

27/04/2026

CARGAS / LOADS


J208PA




TD - 13200 lb		82	98	115	131	148	164	180	197
	TD 13200 lb @ ...(ft)								
197	124	13200	13200	13200	11900	9300	7100	5300	3700
180	124	13200	13200	13200	11900	9300	7100	5300	—
164	125	13200	13200	13200	12100	9500	7300	—	—
148	126	13200	13200	13200	12300	9700	—	—	—
131	126	13200	13200	13200	12300	—	—	—	—
115	115	13200	13200	13200	—	—	—	—	—
98	98	13200	13200	—	—	—	—	—	—

CARGAS / LOADS

J208PA

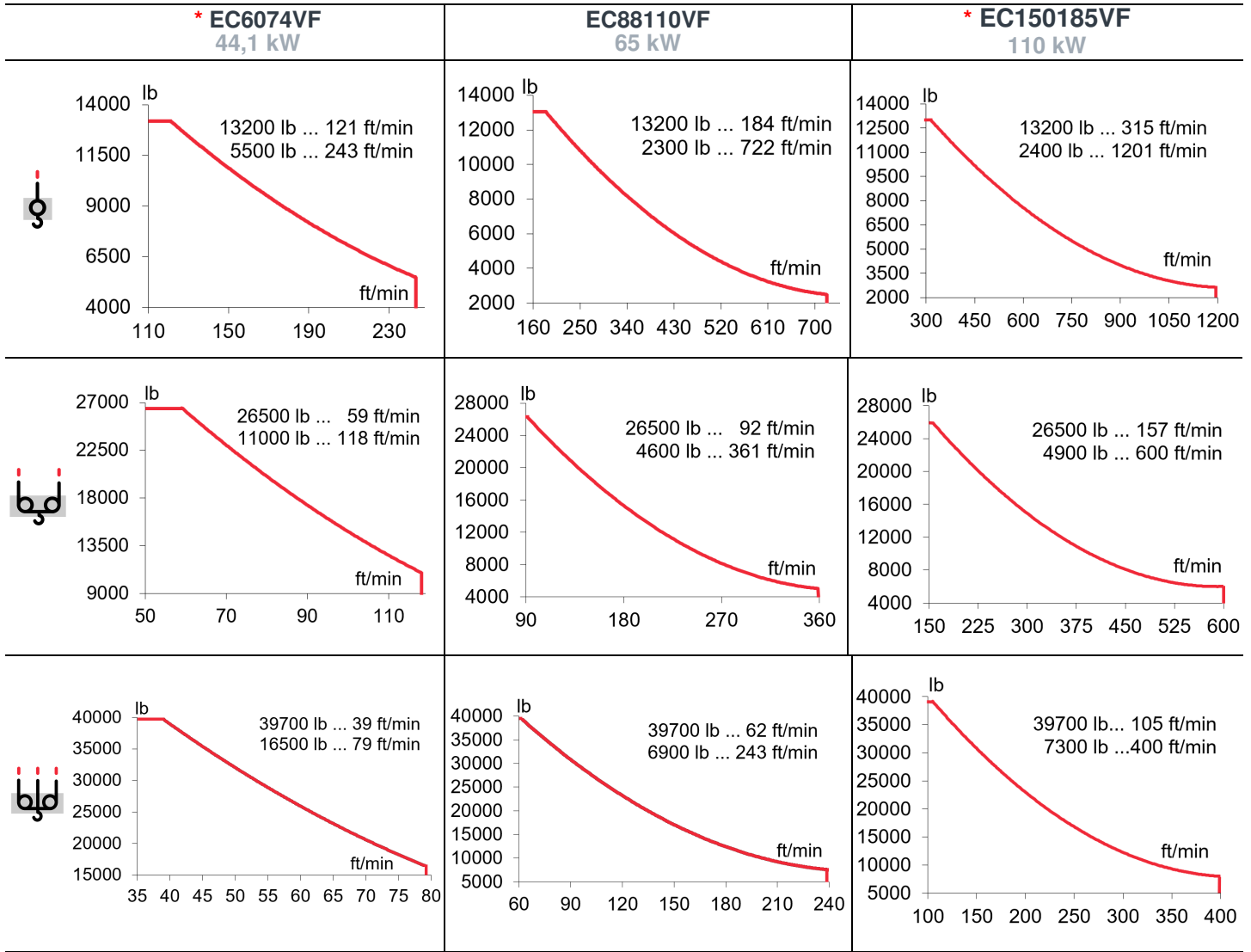


TD/2R/3R 13200 / 26500 / 39700 lb				66	82	98	115	131	148	164	180	197
	3R 39700 lb @ (ft)	2R 26500 lb @ (ft)	TD 13200 lb @ (ft)									
197		79	122	26500	25100	19000	14600	11500	8600	6600	4900	3300
180		79	122	26500	25100	19000	14600	11500	8600	6600	4900	—
164	59	80	123	34400	25400	19200	14800	11700	9000	6800	—	—
148	59	80	124	34400	25400	19400	15000	11900	9300	—	—	—
131	59	80	124	34400	25400	19400	15000	11900	—	—	—	—
115	61	83	115	36200	26900	20900	16500	—	—	—	—	—
98	61	84	98	36200	27100	21200	—	—	—	—	—	—

Datos válidos para / Valid data for



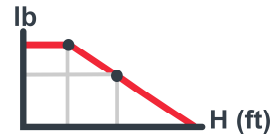
3R H ≤ 295 ft
2R H ≤ 443 ft
TD H ≤ 886 ft



TD 1864 ft
H ≤ 2R 932 ft
3R 620 ft



2598 ft



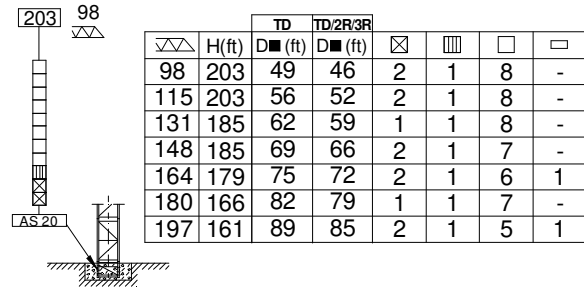
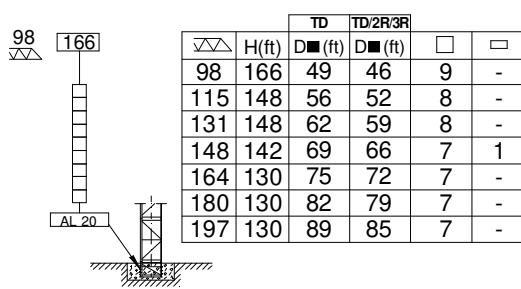
	OG1507VF 2 x 5,5 kW		EP6015VF 44,1 kW		TG2020VF 2 x 7,3 kW
	0...0,8 r/min sl/min		1,5 min		0...66 ft/min

3~ 400V 50Hz
480V 60Hz

KVA			
EC6074VF	65	90	116
EC88110VF	70	99	127
EC150185VF	92	131	171

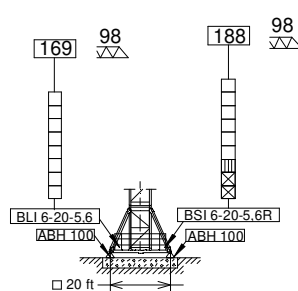
*Dmin

(H) ESTACIONARIA 1 / STATIONARY 1

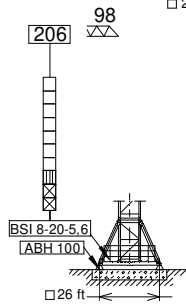


(H) ESTACIONARIA 3 / STATIONARY 3

		TD	TD/2R/3R		
▽▽	H(ft)	D■(ft)	D■(ft)	□	□
98	169	49	46	8	-
115	169	56	52	8	-
131	163	62	59	7	1
148	151	69	66	7	-
164	145	75	72	6	1
180	132	82	79	6	-
197	127	89	85	5	1



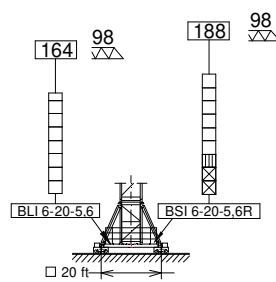
		TD	TD/2R/3R				
▽▽	H(ft)	D■(ft)	D■(ft)	☒	▤	□	□
98	188	49	46	2	1	6	-
115	182	56	52	2	1	5	1
131	169	62	59	2	1	5	-
148	169	69	66	2	1	5	-
164	164	75	72	2	1	4	1
180	151	82	79	2	1	4	-
197	145	89	85	2	1	3	1



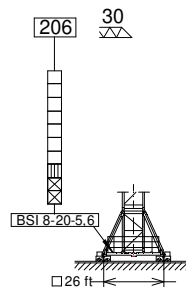
		TD	TD/2R/3R				
▽▽	H(ft)	D■(ft)	D■(ft)	☒	▤	□	□
98	206	49	46	2	1	7	-
115	206	56	52	2	1	7	-
131	201	62	59	2	1	6	1
148	188	69	66	2	1	6	-
164	182	75	72	2	1	5	1
180	169	82	79	1	1	6	-
197	164	89	85	2	1	4	1

(H) TRASLACION / TRAVELLING

		TD	TD/2R/3R		
▽▽	H(ft)	D■(ft)	D■(ft)	□	□
98	164	49	46	7	1
115	151	56	52	7	-
131	151	62	59	7	-
148	146	69	66	6	1
164	133	75	72	6	-
180	133	82	79	6	-
197	127	89	85	5	1



		TD	TD/2R/3R				
▽▽	H(ft)	D■(ft)	D■(ft)	☒	▤	□	□
98	188	49	46	2	1	6	-
115	182	56	52	2	1	5	1
131	170	62	59	2	1	5	-
148	170	69	66	2	1	5	-
164	164	75	72	2	1	4	1
180	152	82	79	2	1	4	-
197	146	89	85	2	1	3	1



		TD	TD/2R/3R				
▽▽	H(ft)	D■(ft)	D■(ft)	☒	▤	□	□
98	206	49	46	2	1	7	-
115	206	56	52	2	1	7	-
131	201	62	59	2	1	6	1
148	188	69	66	2	1	6	-
164	182	75	72	2	1	5	1
180	170	82	79	1	1	6	-
197	164	89	85	2	1	4	1

□ TL 20 □ TL 20-5,6 ▤ TS 20-5,6A ☒ TS 20-5,6

H= Máxima altura de torre sin arriostrar (ft) / Maximum tower height without fastening (ft)

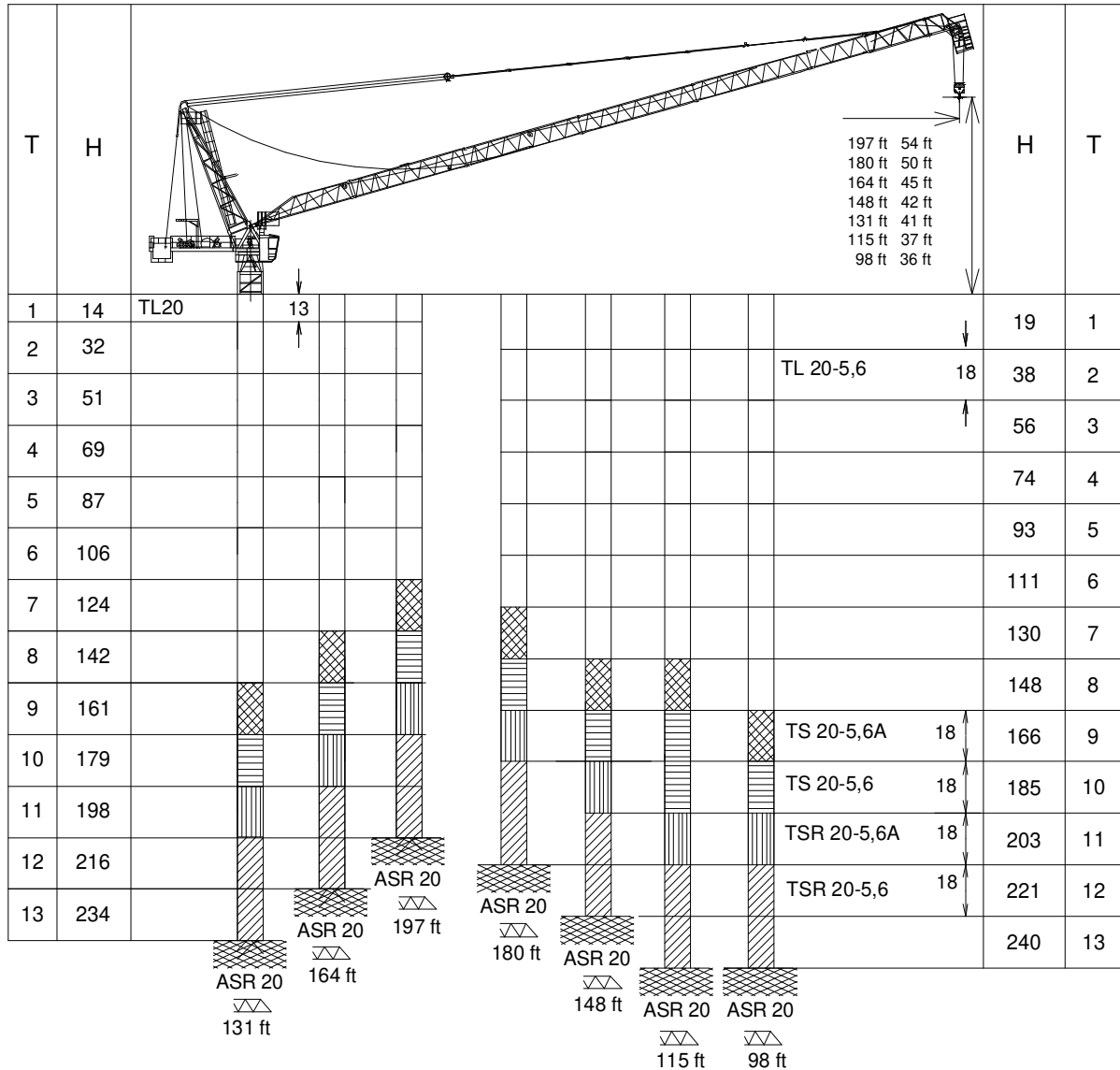
BLI 6-20-5,6 211.20.500
 BSI 6-20-5,6R 211.20.400
 BSI 8-20-5,6 211.20.000

ABH 100 201.23.000
 AL 20 153.21.800

AS 20 160.21.010
 ASR 20 160.21.200



*Dmin



T : Torre / Tower
H : Altura / Height

TL20	153.31.000	TS20-5,6A	204.31.500	ASR 20	160.21.200
TL20-5,6	204.31.400	TSR20-5,6	206.31.000	ASRD 20/24	156.21.000
TS20-5,6	204.31.200	TSR20-5,6A	206.31.300		

Otras configuraciones de torre / Other tower configuration

TRANSPORTE / TRANSPORT



$H = 7 \times TL20-5,6 + AL20 +$

7 x



7 x



1 x

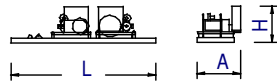
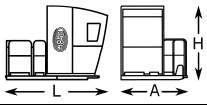
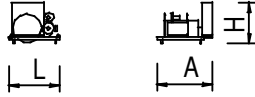
FLAT RACK 40'



		L (ft)	A (ft)	H (ft)	P/W(lb)
Torre inferior / Lower tower	TLI20-5,6	19.3	7.6	7.7	9340
	TSI20-5,6	19.6	7.6	7.8	11880
	TSRI20-5,6	19.7	7.4	7.4	14470
Torre / Tower	TL20	13.7	7.2	7.5	4620
	TL20-5,6	19.3	7.6	7.7	6420
	TS20-5,6A	19.6	7.8	7.6	7780
	TS20-5,6	19.6	7.6	7.8	7830
	TSR20-5,6A	19.4	7.8	7.6	9190
	TSR20-5,6	19.7	7.4	7.4	9280
Torre asiento pista + Torre superior + Orientación Slewing table + Top tower + Slewing mechanism		22.9	8.4	10.0	20940
Punta de torre + Pasteca		38.0	6.3	6.7	12060
Tramo de pluma Jib section	1	30.1	6.7	5.8	3490
	2	33.3	4.2	5.1	3110
	3	33.3	4.2	5.1	2950
	4	33.3	4.2	5.1	2620
	5	33.3	4.2	5.1	2200
	6	17.3	4.2	5.1	1280
	7	17.3	4.2	5.3	1700
Punta de pluma Jib end		11.2	5.1	11.8	1890
Polipasto Hook assembly		3.0	1.1	4.5	1000
Tirante sostén pluma Jib support tie		16.4	1.2	1.5	2720
Estructura contrapluma Counterjib structure		23.3	6.2	1.8	2520

LISTA DE EMBARQUE / PACKING LIST

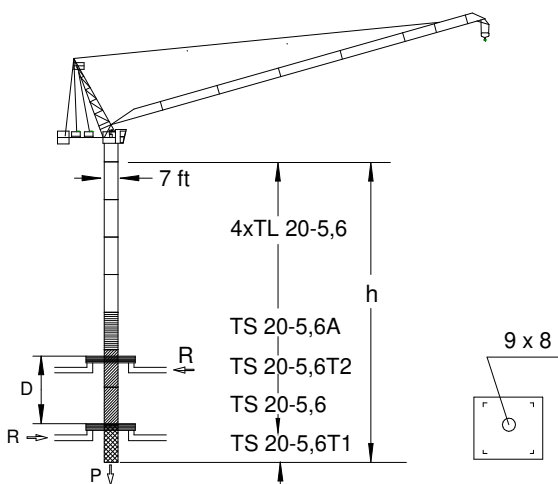
J208PA

		L (ft)	A (ft)	H (ft)	P/W(lb)
Contrapluma + Mecanismos Counterjib + Mechanisms		23.3	7.3	6.0	20280
Plataforma + Cabina / Platform + Cabin		11.2	6.8	7.9	2410
Mecanismos Elevación carga / Hoisting Mechanisms Elevación pluma / Luffing		6.3	6.9	5.1	8440
		6.4	7.1	4.6	7170


TREPADO / CLIMBING

J208PA

i *Dmin ■



h_{max} :
TS 20-5,6T1 + TS 20-5,6 + TS 20-5,6T2 + TS 20-5,6A + 4 x TL 20-5,6

	▶	■
h (ft)	147	
D (ft)	53 - 69	
P (lbf)	267300	240320
R _{max} (lbf)	54670	93270

TS20-5,6T1: 160.32.600
TS20-5,6T2: 160.32.700

i Trepado interno / Internal climbing

 Viento fuera de servicio / Out of service wind

i Consultar / Consult

▶ En servicio / In service

■ Fuera de servicio / Out of service

* Opcional / Optional



Ctra./ Rd. Madrid – Irún - Km. 415 - 20213 IDIAZABAL (Gipuzkoa) - ESPAÑA / SPAIN
P.O. Box, 23 - 20.200 - BEASAIN - E-mail: jaso@jaso.com
Tel. +34 943 - 18 70 00 • Fax. +34 943 - 18 70 20
www.jaso.com

27/04/2026

 **FEM 1001**

DELEGACIÓN / DEALER